



Regional Summary 4.14

Wet Tropics Region

Queensland

This Chapter

The first section of the chapter provides an overall summary of investments supported by the NAP and the regional component of the Trust, within the region to 30 June 2005.

The second section summarises the region's investments against the matters for target addressed within the region. This section details the resource condition targets and related management action targets specific to each matter for target addressed through the NAP and the Trust by the region. It also provides a summary of the type of activities supported by these investments and progress in the achievements of these activities to the 30 June 2005.

Sections

1. [Investment summary](#)
2. [Investment summary by matter for target](#)

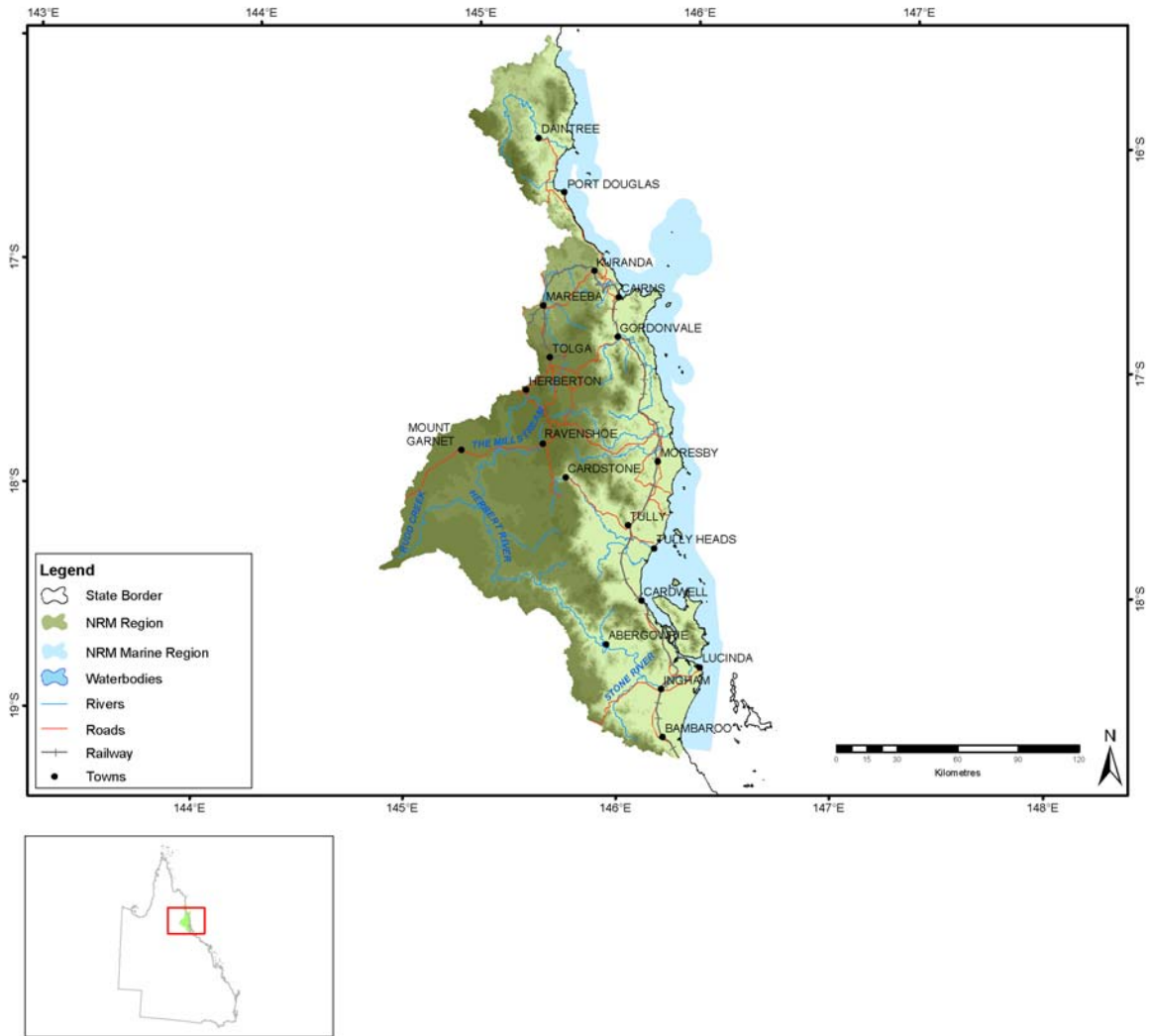
[Native vegetation](#)

[Rivers and wetlands](#)

[Significant native species](#)

[Estuarine, coastal and marine](#)

Administrative arrangements



Administrative Body: Far North Queensland Natural Resource Management Limited

Trust region: Wet Tropics

NAP region: Not Applicable

Investment summary

This section provides an overall summary of approved investments and expenditure from the various investment streams.

Where applicable, it also details expenditure related to priority funding and regional investments based from accredited regional plans. For these investments, information is provided in relation to the matters for target addressed and the types of activities undertaken. Commencing this year in 2004-05, apart from in Table 1.1, Table 1.2 and Table 1.3, priority action funding and regional investments will be reported together.

Table 1.1 Reported expenditure for approved investments in Wet Tropics

Funding stream	Activity Expenditure (\$)			
	July 04 - June 05		Total to June 05	
	NAP	Trust	NAP	Trust
Foundation funding		617,862		890,307
Priority action		1,301,529		2,008,052
Regional investment		282,556		282,556
Total		2,201,947		3,180,915

Table 1.2 Major focus of reported expenditure in Wet Tropics

Matter for target	Activity Expenditure (\$)			
	July 04 - June 05		Total to June 05	
	NAP	Trust	NAP	Trust
Rivers and Wetlands		68,000		68,000
Native Vegetation		226,873		226,873
Significant Native Species		234,058		234,058
Estuarine, Coastal and Marine		113,746		113,746
Other Supporting Activities		1,559,270		2,538,238
Total		2,201,947		3,180,915

Table 1.3 Types of activities in Wet Tropics

Activity Type	Activity Expenditure (\$)			
	July 04 - June 05		Total to June 05	
	NAP	Trust	NAP	Trust
Resource assessment		263,325		263,325
Planning		617,862		890,307
Capacity building		175,060		881,583
On-ground activities		1,145,700		1,145,700
Total		2,201,947		3,180,915

Investment summary by matter for target

Investments supported by the NAP and the regional component of the Trust, undertaken by the region on a priority basis or through approved regional investment strategies are focussed on the matters for target.

This section provides a summary of the major focus of investments and the reported expenditure related to each of these matters for target. In some cases, investments have had a major focus on more than one matter for target and are not able to be attributed to a particular matter for target. Activities that have been classified as 'other supporting activities', have not been reported in this section.

Each summary for a matter for target describes the expenditure of the activities that contribute to the matter for target. It also provides a description of the outputs achieved through these activities to the 30 June 2005.

Where appropriate to regions with approved investment strategies, each summary also details the management action targets and resource condition targets related to each matter for target addressed through the NAP and the Trust by the region. Where a region has an accredited investment plan and approved investment summary, section three of this Regional Summary summarises the region's assessment of progress towards the achievement of these targets.

Rivers and wetlands

Table 2.1.1 Activities with a major focus on rivers and wetlands in Wet Tropics

Activities	Activity Expenditure (\$)			
	July 04 - June 05		Total to June 05	
	NAP	Trust	NAP	Trust
Barron Creek Management		68,000		68,000
Total		68,000		68,000

Table 2.1.2 Summary of outputs from activities with a major focus on rivers and wetlands in Wet Tropics

Outputs	July 04 - June 05			Total to July 05		
	NAP	Trust	Joint	NAP	Trust	Joint
Planning						
Property management plans						
Number of property management plans completed		7			7	
Capacity building						
Awareness raising activities						
Number of displays developed		4			4	

Native vegetation

Table 2.2.1 Activities with a major focus on native vegetation in Wet Tropics

Activities	Activity Expenditure (\$)			
	July 04 - June 05		Total to June 05	
	NAP	Trust	NAP	Trust
Biodiversity / Revegetation		173,000		173,000
Targeted Landscape Enhancement		53,873		53,873
Total		226,873		226,873

Table 2.2.2 Summary of outputs from activities with a major focus on native vegetation in Wet Tropics

Outputs	July 04 - June 05			Total to July 05		
	NAP	Trust	Joint	NAP	Trust	Joint
Resource assessment						
Baseline, trend or condition studies for targets						
Number of sites monitored		8			8	
Decision support tools						
Number of other decision support tools developed		6			6	
Capacity building						
Awareness raising activities						
Number of brochures developed		1			1	
Number of media opportunities		18			18	
Number of newsletters developed		1			1	
Number of other non-training forums		8			13	
Number of other non-training products or materials developed		2			2	
Number of participants at other non-training forums in person-days		80			80	
Quantity distributed		270			270	
Quantity of newsletters distributed		650			650	
Facilitation motivation and support activities						
Number of community groups or community projects assisted		13			13	
Skills and training activities						
Number of participants at training sessions in person-days		360			360	
Number of participants at workshops in person-days		310			310	
Number of training sessions held		19			19	
Number of workshops held		12			13	
On-ground activities						
Indigenous vegetation enhanced/rehabilitated						
Area (hectares) of coastal indigenous vegetation enhanced/rehabilitated		4			4	
Revegetation with indigenous vegetation						
Area (hectares) planted to riparian indigenous species		15			15	
Area (hectares) planted to terrestrial indigenous species		4			4	
Streambank length (km) of riparian revegetation		11			11	
Significant pest plant control						
Area (hectares) of pest plant control		3,160			3,160	

Significant native species

Table 2.3.1 Activities with a major focus on significant native species in Wet Tropics

Activities	Activity Expenditure (\$)			
	July 04 - June 05		Total to June 05	
	NAP	Trust	NAP	Trust
On-Ground Strategic Pest Management in the Wet Tropics (Coastal Hymenachne and Pond Apple)		192,000		192,000
Productive/Sustainable Use		42,058		42,058
Total		234,058		234,058

Table 2.3.2 Summary of outputs from activities with a major focus on significant native species in Wet Tropics

Outputs	July 04 - June 05			Total to July 05		
	NAP	Trust	Joint	NAP	Trust	Joint
Resource assessment						
Decision support tools						
Number of other decision support tools developed		6			6	
Capacity building						
Awareness raising activities						
Number of brochures developed		5			5	
Quantity of brochures distributed		2,300			2,300	
Skills and training activities						
Number of participants at workshops in person-days		190			190	
Number of workshops held		16			16	

Estuarine, coastal and marine

Table 2.4.1 Activities with a major focus on estuarine, coastal and marine in Wet Tropics

Activities	Activity Expenditure (\$)			
	July 04 - June 05		Total to June 05	
	NAP	Trust	NAP	Trust
Integrated GBR catchments water quality monitoring program - data interpretation to drive management outcomes -Coastcare- Cross regional		113,746		113,746
Total		113,746		113,746

Table 2.4.2 Summary of outputs from activities with a major focus on estuarine, coastal and marine in Wet Tropics

Outputs	July 04 - June 05			Total to July 05		
	NAP	Trust	Joint	NAP	Trust	Joint
Capacity building						
Skills and training activities						
Number of other key materials developed		2			2	
Quantity of other key materials distributed		60			60	