



Regional Summary 2.13

Western Region

New South Wales

This Chapter

The first section of the chapter provides an overall summary of investments supported by the NAP and the regional component of the Trust, within the region to 30 June 2005.

The second section summarises the region's investments against the matters for target addressed within the region. This section details the resource condition targets and related management action targets specific to each matter for target addressed through the NAP and the Trust by the region. It also provides a summary of the type of activities supported by these investments and progress in the achievements of these activities to the 30 June 2005.

The third section of the chapter provides the region's assessment of their progress in achieving management action targets and resource condition targets to date, and for those targets anticipated to be achieved during 2004-05.

Sections

1. [Investment summary](#)

2. [Investment summary by matter for target](#)

[Land salinity](#)

[Surface water salinity](#)

[Soil condition](#)

[Native vegetation](#)

[Rivers and wetlands](#)

[Significant native species](#)

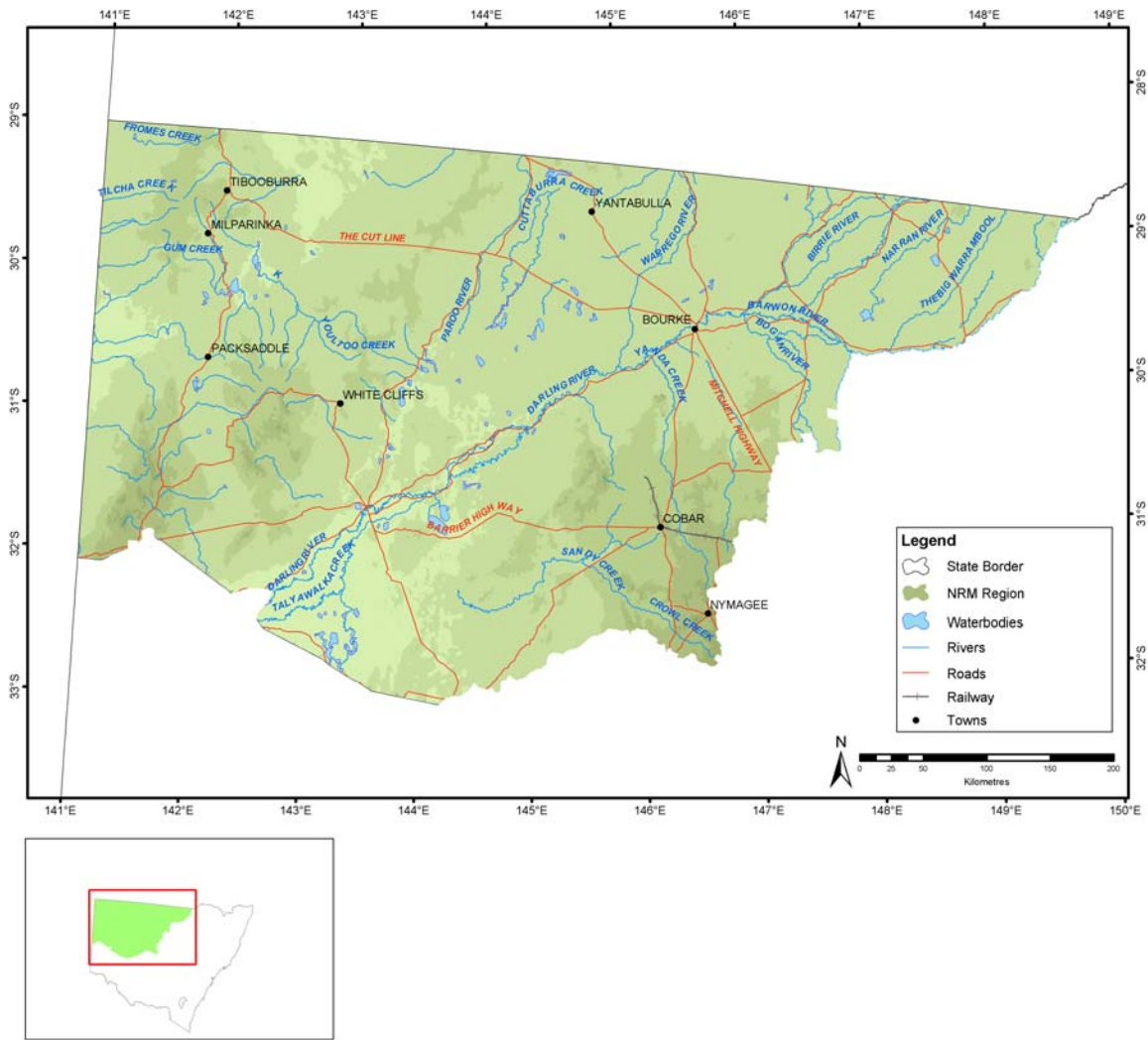
[Significant invasive species](#)

[Estuarine, coastal and marine](#)

[Turbidity in aquatic environments](#)

3. [Target achievement summary](#)

Administrative arrangements



Administrative Body: Western Catchment Management Authority

Trust region: Western

NAP region: Western

Investment summary

This section provides an overall summary of approved investments and expenditure from the various investment streams.

Where applicable, it also details expenditure related to priority funding and regional investments based from accredited regional plans. For these investments, information is provided in relation to the matters for target addressed and the types of activities undertaken. Commencing this year in 2004-05, apart from in Table 1.1, Table 1.2 and Table 1.3, priority action funding and regional investments will be reported together.

Table 1.1 Reported expenditure for approved investments in Western

Funding stream	Activity Expenditure (\$)			
	July 04 - June 05		Total to June 05	
	NAP	Trust	NAP	Trust
Priority action	234,246	27,500	313,199	27,500
Regional investment	623,268	64,574	742,543	64,574
Total	857,514	92,074	1,055,742	92,074

Table 1.2 Major focus of reported expenditure in Western

Matter for target	Activity Expenditure (\$)			
	July 04 - June 05		Total to June 05	
	NAP	Trust	NAP	Trust
Soil Condition	6,433		6,433	
Rivers and Wetlands	95,338		174,291	
Native Vegetation	346		346	
Significant Invasive Species		27,500		27,500
Other Supporting Activities	755,397	64,574	874,672	64,574
Total	857,514	92,074	1,055,742	92,074

Table 1.3 Types of activities in Western

Activity Type	Activity Expenditure (\$)			
	July 04 - June 05		Total to June 05	
	NAP	Trust	NAP	Trust
Resource assessment	10,933	27,500	10,933	27,500
Capacity building	839,802	64,574	1,038,030	64,574
On-ground activities	6,779		6,779	
Total	857,514	92,074	1,055,742	92,074

Investment summary by matter for target

Investments supported by the NAP and the regional component of the Trust, undertaken by the region on a priority basis or through approved regional investment strategies are focussed on the matters for target.

This section provides a summary of the major focus of investments and the reported expenditure related to each of these matters for target. In some cases, investments have had a major focus on more than one matter for target and are not able to be attributed to a particular matter for target. Activities that have been classified as 'other supporting activities', have not been reported in this section.

Each summary for a matter for target describes the expenditure of the activities that contribute to the matter for target. It also provides a description of the outputs achieved through these activities to the 30 June 2005.

Where appropriate to regions with approved investment strategies, each summary also details the management action targets and resource condition targets related to each matter for target addressed through the NAP and the Trust by the region. Where a region has an accredited investment plan and approved investment summary, section three of this Regional Summary summarises the region's assessment of progress towards the achievement of these targets.

Land salinity

6

Table 2.1.1 Management action targets with a major focus on land salinity in Western

Management action target
By 2010, no land uses in the Western Catchment will lead to increased salt mobilisation beyond current levels

Soil condition

Table 2.2.1 Activities with a major focus on soil condition in Western

Activities	Activity Expenditure (\$)			
	July 04 - June 05		Total to June 05	
	NAP	Trust	NAP	Trust
Sustainable Grazing Best Management Practice	6,433		6,433	
Total	6,433		6,433	

Table 2.2.2 Management action targets with a major focus on soil condition in Western

Management action target
Sustainable Farming Management Practice carried out by 100% of landholders within 10 years of Blueprint approval
To regenerate and rehabilitate 25,000 ha of land that has suffered soil erosion and/or pasture loss within 10 years of Blueprint approval

Rivers and wetlands

Table 2.3.1 Activities with a major focus on rivers and wetlands in Western

Activities	Activity Expenditure (\$)			
	July 04 - June 05		Total to June 05	
	NAP	Trust	NAP	Trust
Stock Watering Points - A Central Key to Environmental Management in Semi-Arid Landscapes	95,338		174,291	
Total	95,338		174,291	

Table 2.3.2 Management action targets with a major focus on rivers and wetlands in Western

Management action target
100% of weirs are managed to minimise stratification for the six critical months from October to April by 2010
60% of existing impeding structures modified to ensure flow of floods reach important wetlands and floodplain areas by 2010.
Implement water management strategies to ensure compliance with the Murray-Darling Basin Cap on Diversions in the Barwon-Darling River and all intersecting streams by July 2003
Major salt intrusions within the Barwon Darling River not significantly impacting on water quality as defined by the Interim Water Quality Objectives and associated ANZECC criteria within 10 years of Blueprint approval
NSW Interim River Flow Objectives are addressed in all Water Sharing Plans developed by July 2003

Table 2.3.3 Resource condition targets with a major focus on rivers and wetlands in Western

Resource condition target
The Surface Water System Health Index Rating and the Groundwater System Health Index Rating improved at 60 % of relevant monitoring sites and maintained at all other monitoring sites by 2010

Turbidity in aquatic environments

Table 2.4.1 Management action targets with a major focus on turbidity in aquatic environments in Western

Management action target
100% compliance with regulations relating to point and diffuse source pollution within 2 years of Blueprint approval to achieve water quality objectives consistent with relevant ANZECC criteria. DEC responsibility by regulation
Adoption by agriculture and industry of best management practice relating to pollution of waterways, within 4 years of Blueprint approval to achieve objectives consistent with relevant ANZECC water quality guidelines
Voluntary management of 40% of priority areas (as identified by the Riparian Zone Health Survey) on Western Catchment rivers, leading to incremental improvement in native vegetation, within 10 years of Blueprint approval

Surface water salinity

Table 2.5.1 Management action targets with a major focus on surface water salinity in Western

Management action target
Dilution flows achieving EC levels for the protection of drinking water quality 80% of the time as defined in the BDRMC Water Sharing Plan
Major salt intrusions within the Barwon Darling River not significantly impacting on water quality as defined by the Interim Water Quality Objectives and associated ANZECC criteria within 10 years of Blueprint approval

Table 2.5.2 Resource condition targets with a major focus on surface water salinity in Western

Resource condition target
Salinity in the Barwon-Darling at Wilcannia less than 800EC for 80% of the time as measured on a daily basis and less than 350EC for 50% of the time by the year 2010
Salt load in the Barwon-Darling at Wilcannia less than 530, 000 tonnes per year for 80% of the time and less than 160, 000 tonnes per year for 50% of the time by the year 2010

Native vegetation

Table 2.6.1 Activities with a major focus on native vegetation in Western

Activities	Activity Expenditure (\$)			
	July 04 - June 05		Total to June 05	
	NAP	Trust	NAP	Trust
Landholder Incentives	346		346	
Total	346		346	

Table 2.6.3 Management action targets with a major focus on native vegetation in Western

Management action target
No increase in impacts of pest animals above current levels (2002).
Sustainable Grazing Management Practice carried out by 100% of landholders within 10 years of Blueprint approval

Table 2.6.4 Resource condition targets with a major focus on native vegetation in Western

Resource condition target
Quality and quantity of vegetation managed to maintain and/or improve designated cover capable of preventing soil erosion (i.e. designated cover greater than or equal to 40%)

Significant native species

Table 2.7.1 Management action targets with a major focus on significant native species in Western

Management action target
An ongoing program is established that allows landholders to incorporate land "managed for conservation" as an alternative land use and part of a viable enterprise, within 2 years of Blueprint approval
Ecological communities of high conservation value are identified within 3 years of Blueprint approval and adequately protected throughout the Catchment by negotiation with landholders, within 8 years of Blueprint approval
Increase the mean length of uninterrupted river available to native fish by 25%, and increase the mean percentage of time fish can move between sections divided by barriers by 25% within 10 years of Blueprint approval
No increase in the number of species or area of noxious or exotic weed infestation above current levels (2002).
Priority areas for targeted rehabilitation of fish and threatened aquatic species habitats identified and mapped, within 18 months of Blueprint approval, and action plans developed and implemented in 20% of areas within 10 years of Blueprint approval
The ideal distribution of land to be managed for conservation and cleared for change of land use, is determined for the Shires of Cobar, Bourke, Brewarrina and Walgett within 1 year of Blueprint approval and the rest of the Catchment within 2 years

Table 2.7.2 Resource condition targets with a major focus on significant native species in Western

Resource condition target
Ecological communities of high conservation value are adequately protected
Of the area of each other ecological community: 12% is managed for conservation within 10 years and 25% within 25 years
Of the area of each other ecological community: No more than 35% in total is cleared for change of land use

Significant invasive species

Table 2.8.1 Activities with a major focus on significant invasive species in Western

Activities	Activity Expenditure (\$)			
	July 04 - June 05		Total to June 05	
	NAP	Trust	NAP	Trust
Prioritising Pest Animal and Weed Threats in the Western Catchment		27,500		27,500
Total		27,500		27,500

Table 2.8.2 Summary of outputs from activities with a major focus on significant invasive species in Western

Outputs	July 04 - June 05			Total to July 05		
	NAP	Trust	Joint	NAP	Trust	Joint
Capacity building						
Awareness raising activities						
Number of brochures developed		2			2	
Number of media opportunities		3			3	
Skills and training activities						
Number of workshops held		1			1	

Table 2.8.3 Management action targets with a major focus on significant invasive species in Western

Management action target
2.3 million ha under ongoing management to prevent scrub encroachment within 10 years of Blueprint approval
Decrease area of scrub dominated landscapes by 200,000 ha within 10 years of Blueprint approval

Target summary

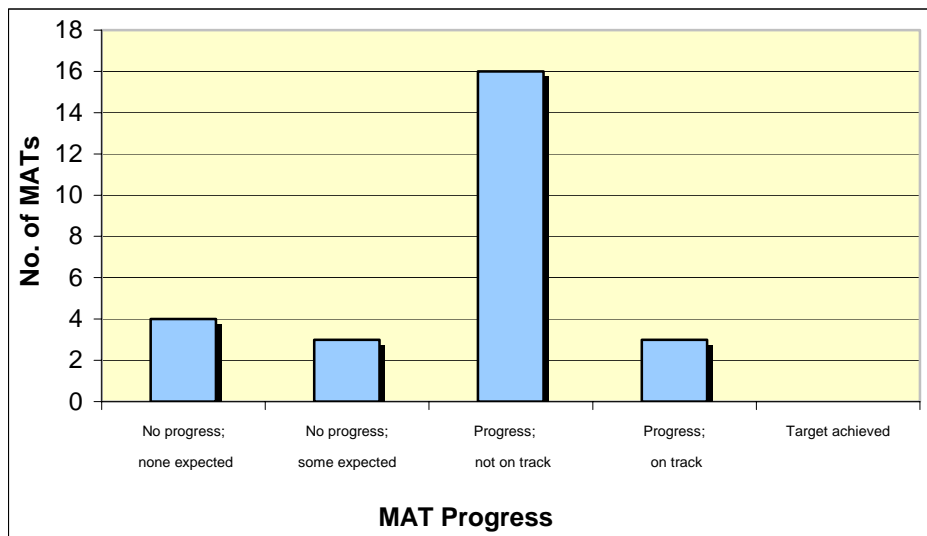
Approved investment strategies detail management action targets (MATs) and resource condition targets (RCTs) targets having a major focus on matters for target, and other supporting activities.

Regions were asked to make an assessment of progress towards the achievement of the targets using the available evidence.

Progress towards achieving each MAT was assessed using the following five-point scale:

- Target achieved or exceeded.
- Progress and on track.
- Progress, but not on track.
- No progress, but some progress was expected.
- No progress, but none expected at this time.

Figure 3.1 Progress towards achieving Management Action Targets in Western



Progress towards achieving each RCT was assessed using the following five-point scale:

- Evidence of target achieved or exceeded.
- Evidence of progress.
- Evidence of no progress.
- Evidence of regress.
- Insufficient evidence to assess.

Figure 3.2 Progress towards achieving Resource Condition Targets in Western

