



Regional Summary 4.11

South West Region

Queensland

This Chapter

The first section of the chapter provides an overall summary of investments supported by the NAP and the regional component of the Trust, within the region to 30 June 2005.

The second section summarises the region's investments against the matters for target addressed within the region. This section details the resource condition targets and related management action targets specific to each matter for target addressed through the NAP and the Trust by the region. It also provides a summary of the type of activities supported by these investments and progress in the achievements of these activities to the 30 June 2005.

Sections

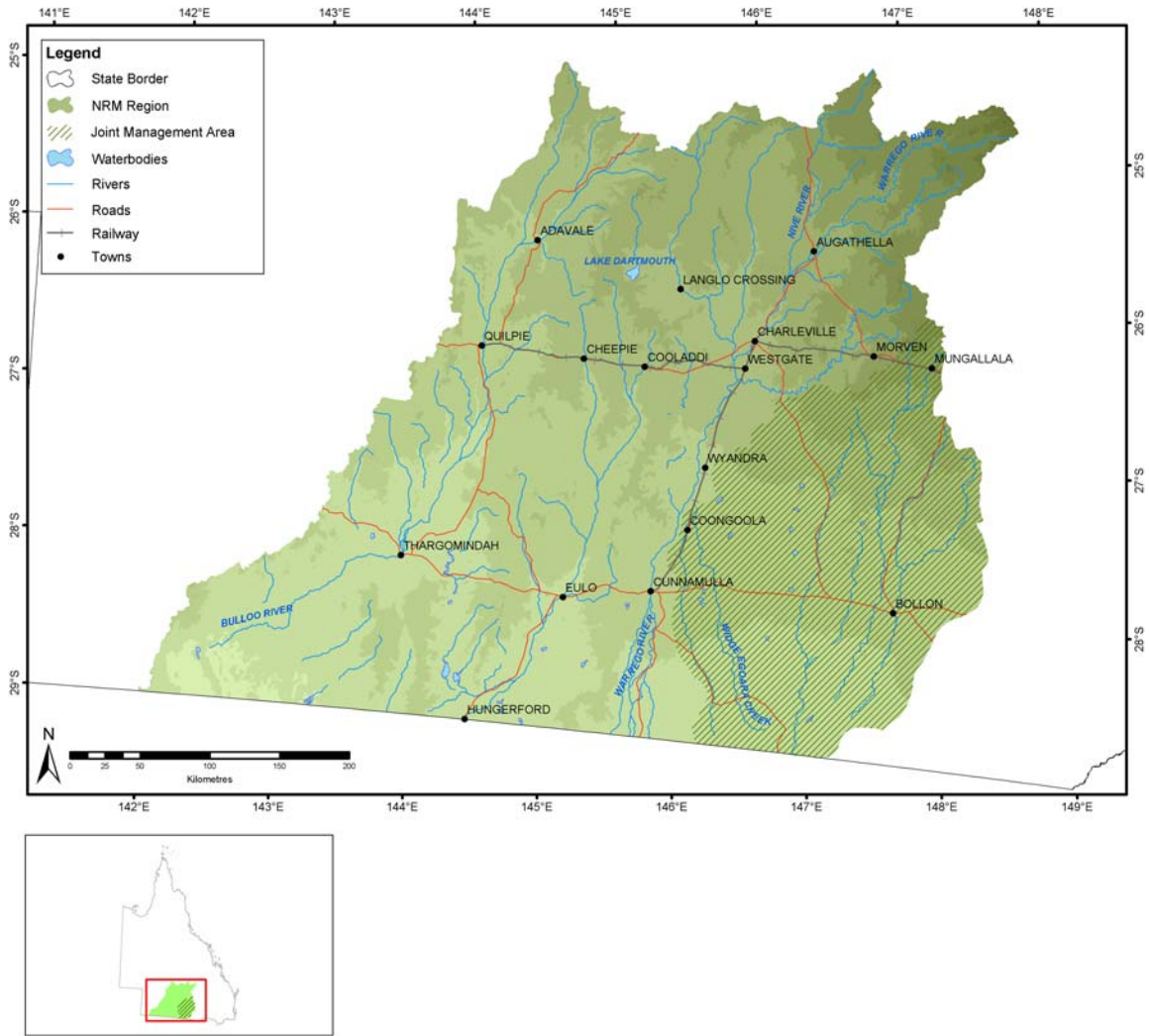
1. [Investment summary](#)
2. [Investment summary by matter for target](#)

[Land salinity](#)

[Soil condition](#)

[Rivers and wetlands](#)

Administrative arrangements



Administrative Body: South West Natural Resource Management Group and Queensland Murray Darling Committee Incorporated

Trust region: South West

NAP region: Balonne - Maranoa

Investment summary

This section provides an overall summary of approved investments and expenditure from the various investment streams.

Where applicable, it also details expenditure related to priority funding and regional investments based from accredited regional plans. For these investments, information is provided in relation to the matters for target addressed and the types of activities undertaken. Commencing this year in 2004-05, apart from in Table 1.1, Table 1.2 and Table 1.3, priority action funding and regional investments will be reported together.

Table 1.1 Reported expenditure for approved investments in South West

Funding stream	Activity Expenditure (\$)			
	July 04 - June 05		Total to June 05	
	NAP	Trust	NAP	Trust
Foundation funding		199,092		213,692
Priority action		1,050,172		1,793,383
Regional investment	174,572		174,572	
Total	174,572	1,249,264	174,572	2,007,075

Table 1.2 Major focus of reported expenditure in South West

Matter for target	Activity Expenditure (\$)			
	July 04 - June 05		Total to June 05	
	NAP	Trust	NAP	Trust
Rivers and Wetlands		448,872		448,872
Other Supporting Activities	174,572	800,392	174,572	1,558,203
Total	174,572	1,249,264	174,572	2,007,075

Table 1.3 Types of activities in South West

Activity Type	Activity Expenditure (\$)			
	July 04 - June 05		Total to June 05	
	NAP	Trust	NAP	Trust
Resource assessment	174,572		174,572	
Planning		647,964		662,564
Capacity building		601,300		1,344,511
Total	174,572	1,249,264	174,572	2,007,075

Investment summary by matter for target

Investments supported by the NAP and the regional component of the Trust, undertaken by the region on a priority basis or through approved regional investment strategies are focussed on the matters for target.

This section provides a summary of the major focus of investments and the reported expenditure related to each of these matters for target. In some cases, investments have had a major focus on more than one matter for target and are not able to be attributed to a particular matter for target. Activities that have been classified as 'other supporting activities', have not been reported in this section.

Each summary for a matter for target describes the expenditure of the activities that contribute to the matter for target. It also provides a description of the outputs achieved through these activities to the 30 June 2005.

Where appropriate to regions with approved investment strategies, each summary also details the management action targets and resource condition targets related to each matter for target addressed through the NAP and the Trust by the region. Where a region has an accredited investment plan and approved investment summary, section three of this Regional Summary summarises the region's assessment of progress towards the achievement of these targets.

Land salinity

6

Table 2.1.1 Management action targets with a major focus on land salinity in South West

Management action target
30% of Nebine-Mungallala, Warrego-Paroo and Bulloo catchments covered by PLANSCAPES action plans by 2010. Specifically including actions to address: • Land Salinity • Saline Groundwater • Soil Condition

Soil condition

Table 2.2.1 Management action targets with a major focus on soil condition in South West

Management action target
Current Recommended Practices developed for major industries by 2006

Rivers and wetlands

Table 2.3.1 Activities with a major focus on rivers and wetlands in South West

Activities	Activity Expenditure (\$)			
	July 04 - June 05		Total to June 05	
	NAP	Trust	NAP	Trust
Implementing integrated multi-property planning schemes (IMPS)		448,872		448,872
Total		448,872		448,872

Table 2.3.2 Summary of outputs from activities with a major focus on rivers and wetlands in South West

Outputs	July 04 - June 05			Total to July 05		
	NAP	Trust	Joint	NAP	Trust	Joint
Resource assessment						
Baseline, trend or condition studies for targets						
Number of studies		1			1	
Decision support tools						
Not applicable		5			5	
Number of other decision support tools developed		2			2	
Investigations (survey, inventory and mapping and data analysis)						
Area (hectares) surveyed by vegetation studies		5,000			5,000	
Number of vegetation studies		1			1	
Planning						
Property management plans						
Number of property management plans completed		3			3	
Capacity building						
Awareness raising activities						
Number of brochures developed		4			6	
Number of field days		2			3	
Number of other non-training forums		3			4	
Number of participants at field days in person-days		15			30	
Number of participants at other non-training forums in person-days		120			240	
Quantity of brochures distributed		610			720	
Facilitation motivation and support activities						
Number of community groups or community projects assisted		15			30	
Number of FTE active community support positions (facilitators or coordinators)		1			1	
Skills and training activities						
Number of course notes developed		3			3	
Number of participants at workshops in person-days		5			5	
Number of workshops held		1			1	
Quantity of course notes distributed		29			29	
On-ground activities						
Conservation by agreements						
Area (hectares) of voluntary conservation agreements covered		19,320			19,320	
Number of voluntary conservation agreements		11			11	
Indigenous vegetation protected by fencing						
Area (hectares) of riparian indigenous vegetation protected by fencing		2,600			2,600	

Outputs	July 04 - June 05			Total to July 05		
	NAP	Trust	Joint	NAP	Trust	Joint
Area (hectares) of terrestrial indigenous vegetation protected by fencing		5,600			5,600	
Streambank length (km) of riparian indigenous vegetation protected by fencing		22			22	
Riparian and waterway health						
Number of off-stream (alternative) watering sites installed		11			11	

Table 2.3.3 Management action targets with a major focus on rivers and wetlands in South West

Management action target
25% increase in water use efficiency per capita in domestic use by 2007, and annual reduction of town water loss
Develop and coordinate delivery of incentive packages to restore and enhance priority landscapes by 2010.