



Regional Summary 4.10
South East Queensland Region
Queensland

This Chapter

The first section of the chapter provides an overall summary of investments supported by the NAP and the regional component of the Trust, within the region to 30 June 2005.

The second section summarises the region's investments against the matters for target addressed within the region. This section details the resource condition targets and related management action targets specific to each matter for target addressed through the NAP and the Trust by the region. It also provides a summary of the type of activities supported by these investments and progress in the achievements of these activities to the 30 June 2005.

Sections

1. [Investment summary](#)

2. [Investment summary by matter for target](#)

[Land salinity](#)

[Surface water salinity](#)

[Soil condition](#)

[Native vegetation](#)

[Rivers and wetlands](#)

[Significant native species](#)

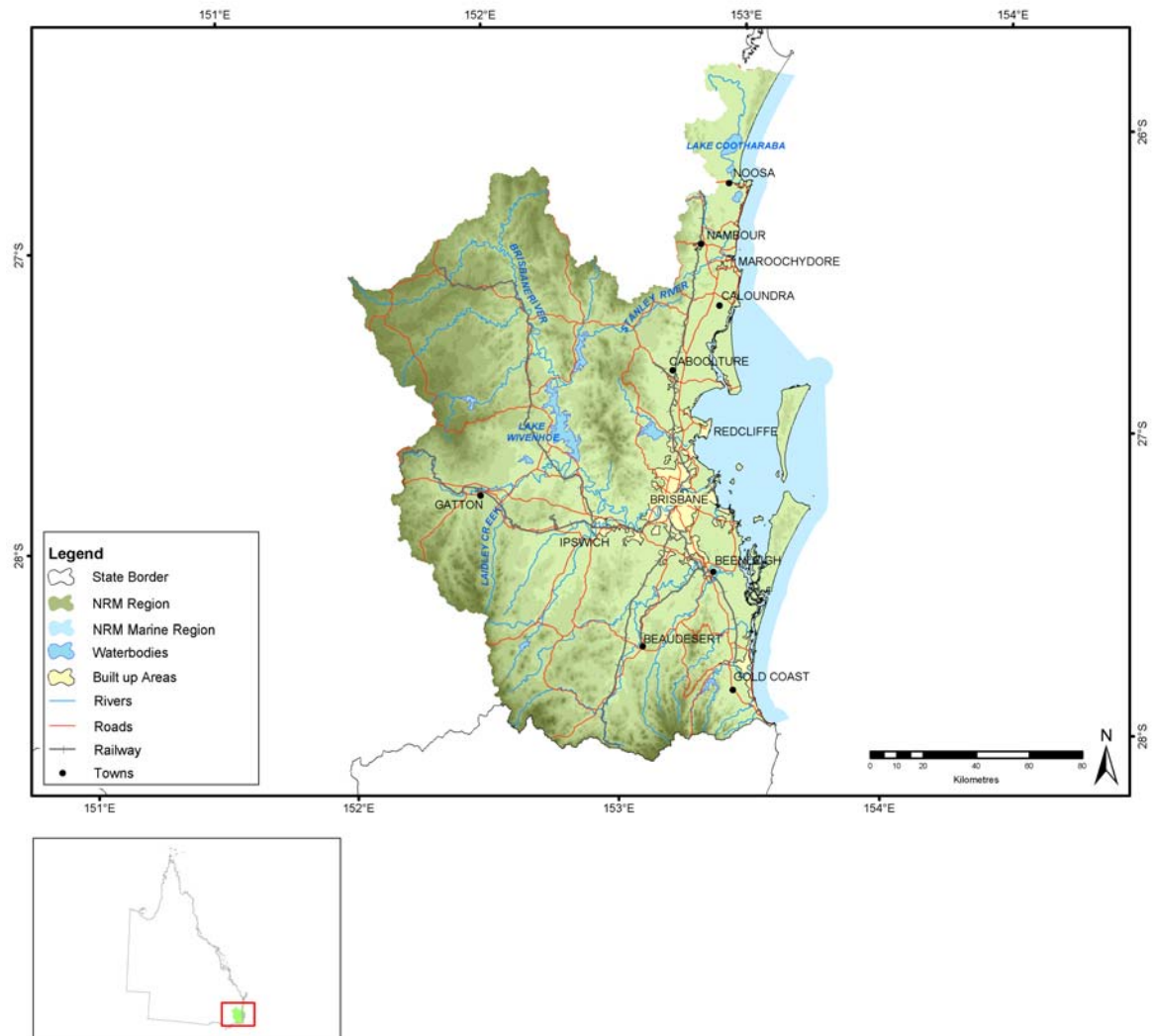
[Nutrients in aquatic environments](#)

[Significant invasive species](#)

[Turbidity in aquatic environments](#)

[Estuarine, coastal and marine](#)

Administrative arrangements



Administrative Bodies: South East Queensland Western Catchments Group and Natural Resource Management South East Queensland Incorporated

Trust region: South East Queensland

NAP region: Lockyer - Bremer - Upper Brisbane

Investment summary

This section provides an overall summary of approved investments and expenditure from the various investment streams.

Where applicable, it also details expenditure related to priority funding and regional investments based from accredited regional plans. For these investments, information is provided in relation to the matters for target addressed and the types of activities undertaken. Commencing this year in 2004-05, apart from in Table 1.1, Table 1.2 and Table 1.3, priority action funding and regional investments will be reported together.

Table 1.1 Reported expenditure for approved investments in South East Queensland

Funding stream	Activity Expenditure (\$)			
	July 04 - June 05		Total to June 05	
	NAP	Trust	NAP	Trust
Foundation funding	216,048	382,904	443,899	878,994
Priority action	1,011,160	1,417,190	1,125,078	1,783,413
Regional investment	549,702	182,244	549,702	182,244
Regional competitive		127,598		127,598
Total	1,776,910	2,109,936	2,118,679	2,972,249

Table 1.2 Major focus of reported expenditure in South East Queensland

Matter for target	Activity Expenditure (\$)			
	July 04 - June 05		Total to June 05	
	NAP	Trust	NAP	Trust
Soil Condition	26,650		26,650	
Rivers and Wetlands	300,989	310,872	300,989	310,872
Nutrients in Aquatic Environments	204,841	127,598	204,841	127,598
Native Vegetation	48,157	359,220	48,157	359,220
Significant Native Species		55,721		55,721
Estuarine, Coastal and Marine		100,000		100,000
Other Supporting Activities	1,196,273	1,156,524	1,538,042	2,018,837
Total	1,776,910	2,109,936	2,118,679	2,972,249

Table 1.3 Types of activities in South East Queensland

Activity Type	Activity Expenditure (\$)			
	July 04 - June 05		Total to June 05	
	NAP	Trust	NAP	Trust
Resource assessment	255,502	282,153	255,502	282,153
Planning		645,795		1,141,885
Capacity building	1,193,769	912,797	1,535,538	1,279,020
On-ground activities	327,639	269,191	327,639	269,191
Total	1,776,910	2,109,936	2,118,679	2,972,249

Investment summary by matter for target

Investments supported by the NAP and the regional component of the Trust, undertaken by the region on a priority basis or through approved regional investment strategies are focussed on the matters for target.

This section provides a summary of the major focus of investments and the reported expenditure related to each of these matters for target. In some cases, investments have had a major focus on more than one matter for target and are not able to be attributed to a particular matter for target. Activities that have been classified as 'other supporting activities', have not been reported in this section.

Each summary for a matter for target describes the expenditure of the activities that contribute to the matter for target. It also provides a description of the outputs achieved through these activities to the 30 June 2005.

Where appropriate to regions with approved investment strategies, each summary also details the management action targets and resource condition targets related to each matter for target addressed through the NAP and the Trust by the region. Where a region has an accredited investment plan and approved investment summary, section three of this Regional Summary summarises the region's assessment of progress towards the achievement of these targets.

Land salinity

6

Table 2.1.1 Management action targets with a major focus on land salinity in South East Queensland

Management action target
20 percent increase in landholders within priority at risk (existing and future) saline areas adopting current recommended practice for landuse management by 2010 (3 high profile sites ameliorated by 2006)
Determine the extent and impacts of salinity on infrastructure across the western catchments region at a shire scale by 2010

Table 2.1.2 Resource condition targets with a major focus on land salinity in South East Queensland

Resource condition target
Area of salinity incidence across SEQ no greater than current extent by 2009.
No net increase in area of salinised land from 2006 baseline level by 2025
Reduced risk of salinity damage to priority at risk infrastructure in high salinity risk areas by 2025

Soil condition

Table 2.2.1 Activities with a major focus on soil condition in South East Queensland

Activities	Activity Expenditure (\$)			
	July 04 - June 05		Total to June 05	
	NAP	Trust	NAP	Trust
Productive Landscapes	26,650		26,650	
Total	26,650		26,650	

Table 2.2.2 Management action targets with a major focus on soil condition in South East Queensland

Management action target
100 percent of the catchment assessed and mapped for landuse capability/suitability by 2007
3750ha (5 percent) of identified priority hillslope erosion risk areas managed appropriately by 2010 (1000ha by 2006, 2000ha by 2008, 3750ha by 2010)
60 percent of planning schemes incorporate relevant issues and actions from Healthy Land – Our Future and other regional strategies by 2008
Increased stabilisation of 20km of gully erosion sites by 2010 (5km by 2006, 15km by 2008, 20km by 2010)
No GQAL rezoned for other land purposes except in accordance with SPP 1/92 'Development and the Conservation of Agricultural Land' and the SEQ Regional Plan
Set resource condition target for soil loss through erosion processes by 2005
Soil health hazard and risk assessment map for the region completed by 2008

Table 2.2.2 Resource condition targets with a major focus on soil condition in South East Queensland

Resource condition target
25 % of land in the region used within its capability (land uses to be managed to the level of recommended practice), 15-20 year timeframe
A reduction in the percentage of the catchment affected by soil health decline.
All land susceptible to soil erosion, acidification, loss of structure, landslip and salinisation removed from damaging use or with appropriate prevention measures
Land resources managed to capability to minimise soil loss through erosion processes by 2025
No loss of Good Quality Agricultural Land (GQAL) in the western catchments region
Soil health condition in priority areas improved by 2025

Rivers and wetlands

Table 2.3.1 Activities with a major focus on rivers and wetlands in South East Queensland

Activities	Activity Expenditure (\$)			
	July 04 - June 05		Total to June 05	
	NAP	Trust	NAP	Trust
Prioritisation and Target Setting for Waterways Protection, Stabilisation and Repair		225,000		225,000
Reviving Our Rivers and Wetlands	63,500		63,500	
Water For Life	237,489		237,489	
Waterwatch Network maintenance and enhancement		85,872		85,872
Total	300,989	310,872	300,989	310,872

Table 2.3.2 Summary of outputs from activities with a major focus on rivers and wetlands in South East Queensland

Outputs	July 04 - June 05			Total to July 05		
	NAP	Trust	Joint	NAP	Trust	Joint
Resource assessment						
Baseline, trend or condition studies for targets						
Number of sites monitored		96			96	
Number of studies		10			16	
Decision support tools						
Number of information management systems developed		2			2	
Investigations (survey, inventory and mapping and data analysis)						
Area (hectares) surveyed by surface water / inland aquatic studies		2.50M			2.50M	
Number of surface water / inland aquatic studies		3			3	
Capacity building						
Skills and training activities						
Number of other key materials developed		24			24	
Number of participants at training sessions in person-days		110			110	
Number of participants at workshops in person-days		20			20	
Number of training sessions held		19			19	
Number of workshops held		2			2	
Quantity of other key materials distributed		660			660	

Table 2.3.3 Management action targets with a major focus on rivers and wetlands in South East Queensland

Management action target
30 percent increase in the uptake of water use efficiency practices by urban and rural residential users by 2010
50 percent of identified diffuse source pollution priority sites within the declared water supply catchment managed appropriately by 2007
All recreation access sites to waterways or water bodies planned and managed by 2010
Consistent approaches undertaken by local governments to access biodiversity values, water quality objectives and high risk lands by 2001
Groundwater managed according to current best practice within priority areas by 2009

Management action target
Increase the uptake of water use efficiency practices by priority agricultural and industrial users by 2008 (a specific target will be set from SW2.1)
Increased stabilisation of 30km of streambank erosion by 2010 (5km by 2006, 15km by 2008, 20km by 2010)
Regionally significant aquatic ecosystems are identified by 2007
Restoration program implemented for areas identified as priorities for riparian vegetation in moderate condition (State of Rivers report) by 2015
The sustainable yield of groundwater is defined for existing and future rural, urban, agricultural and industrial demand by 2020
Water quality risks to human health are determined and appropriate mitigation options developed by 2009

Table 2.3.4 Resource condition targets with a major focus on rivers and wetlands in South East Queensland

Resource condition target
100 percent of identified regionally significant aquatic ecosystems improved to a condition that supports a diverse functioning ecosystem by 2020
15 percent of stream reaches identified as moderate in 2004 baseline improved to good condition by 2020
By 2020 significant current natural wetlands, lakes and springs are retained in extent and distribution and purpose built wetlands and lakes are maintained
Condition of 200 ha of wetlands improved to a regional reference site standard by 2020
Environmental flows are provided in accordance with WRP by 2020
In 2020 toxicants in water, sediment and biota meet standards of Australian Water Quality Guidelines
No decrease in the extent of aquatic ecosystems habitat from 2006 baseline by 2020
No further loss or degradation of significant existing wetlands and a net gain of vegetation in wetland ecosystems, lakes and springs by 2020
River Condition in 2020 is improved from current state through improved management of livestock access
River Condition in 2020 is improved from current state through maintenance or restoration of bank vegetation to minimise erosion
River Condition in 2020 is improved from current state through maintenance or restoration of large woody debris for channel shape and form
River Condition in 2020 is improved from current state through maintenance or restoration of vegetation to achieve canopy shade resulting in: 1- moderation of temperature and dissolved oxygen extremes; 2- organic cycling of leaf litter for nutrients
The allocation of groundwater for agricultural, industrial and domestic users consumption is within the sustainable yield of the catchment by 2025
Urban, agricultural and industrial users consumption of surface water is within the sustainable yield of the catchment by 2025
Water quality of all waterways within the western catchments of SEQ will meet agreed standards and targets by 2020
Water quality within all aquifers (GMUs) of the western catchments will fall within an agreed range of conductivity, nitrate, and chloride standards and targets by 2020

Nutrients in aquatic environments

Table 2.4.1 Activities with a major focus on nutrients in aquatic environments in South East Queensland

Activities	Activity Expenditure (\$)			
	July 04 - June 05		Total to June 05	
	NAP	Trust	NAP	Trust
Develop & Implement baseline data systems & protocols for regional targets	204,841		204,841	
Total	204,841		204,841	

Table 2.4.2 Summary of outputs from activities with a major focus on nutrients in aquatic environments in South East Queensland

Outputs	July 04 - June 05			Total to July 05		
	NAP	Trust	Joint	NAP	Trust	Joint
Resource assessment						
Decision support tools						
Number of models developed	1			1		
Capacity building						
Facilitation motivation and support activities						
Number of FTE active community support positions (facilitators or coordinators)	1			2		

Table 2.4.3 Management action targets with a major focus on nutrients in aquatic environments in South East Queensland

Management action target
Sustainable pollutant loads are for aquatic ecosystems determined and management options developed by 2009

Table 2.4.4 Resource condition targets with a major focus on nutrients in aquatic environments in South East Queensland

Resource condition target
In 2020 levels of nutrients in aquatic ecosystems meet objectives set forward in SEQRWMS and its successors
Reduction in 2004 pollutant loads for aquatic ecosystems by 2020

Turbidity in aquatic environments

Table 2.5.1 Resource condition targets with a major focus on turbidity in aquatic environments in South East Queensland

Resource condition target
25 percent reduction in 2004 baseline sediment loads in the Upper Brisbane, Lockyer and Bremer sub-catchments by 2025

Surface water salinity

Table 2.6.1 Management action targets with a major focus on surface water salinity in South East Queensland

Management action target
Determine the extent and impacts of instream salinity on the surface water resource within the western catchments of SEQ by 2015

Table 2.6.2 Resource condition targets with a major focus on surface water salinity in South East Queensland

Resource condition target
Instream electrical conductivity levels meet agreed standards for agricultural, industrial and domestic use by 2020

Native vegetation

Table 2.7.1 Activities with a major focus on native vegetation in South East Queensland

Activities	Activity Expenditure (\$)			
	July 04 - June 05		Total to June 05	
	NAP	Trust	NAP	Trust
Indigenous Engagement Strategy - SEQ	48,157		48,157	
Landholders Assistance Program		359,220		359,220
Total	48,157	359,220	48,157	359,220

Table 2.7.2 Summary of outputs from activities with a major focus on native vegetation in South East Queensland

Outputs	July 04 - June 05			Total to July 05		
	NAP	Trust	Joint	NAP	Trust	Joint
Capacity building						
Awareness raising activities						
Number of other non-training products or materials developed		5			5	
Quantity distributed		370			370	
Facilitation motivation and support activities						
Number of community groups or community projects assisted		6			12	
Number of FTE active community support positions (facilitators or coordinators)	1			1		
Skills and training activities						
Number of other key materials developed		16			16	
Quantity of other key materials distributed		10,170			10,170	
On-ground activities						
Conservation by agreements						
Area (hectares) of legal conservation covenants and other legal agreements covered		8			8	
Number of legal conservation covenants and other legal agreements		9			9	
Indigenous vegetation enhanced/rehabilitated						
Area (hectares) of terrestrial indigenous vegetation enhanced/rehabilitated		8			8	
Revegetation with indigenous vegetation						
Area (hectares) planted to terrestrial indigenous species		0			0	

Table 2.7.3 Management action targets with a major focus on native vegetation in South East Queensland

Management action target
Appropriate fire management regimes implemented across all regionally significant areas by 2010
Implementation of management actions in or adjacent to 10 percent of identified isolated priority remnants by 2010
Improve the condition of 10% of identified state and regional corridors by 2010
Inclusion of remnant vegetation conservation priorities in all planning schemes by 2008 with the exception of those protected areas, ie 'endangered' and 'of concern' already covered by VMA mapping

Table 2.7.4 Resource condition targets with a major focus on native vegetation in South East Queensland

Resource condition target
Increase indigenous (local native) species diversity from 2005 baseline within identified regionally and locally significant areas by 2025
Maintain and/or increase the extent of remnant vegetation (regional ecosystems) by 2025, as follows: maintain extent of 33% across the region, increase extent to 22.5% in the Bremer, maintain extent of 39% in the Lockyer, maintain extent of 41% in th
No further loss or degradation of viable networks and wildlife habitat
Vegetation cover (incorporating grasses, shrubs, trees, etc) greater than 70% where vegetation cover is appropriate to erosion risk – e.g. groundcover in cleared areas, and tree cover in forested areas.

Significant native species

Table 2.8.1 Activities with a major focus on significant native species in South East Queensland

Activities	Activity Expenditure (\$)			
	July 04 - June 05		Total to June 05	
	NAP	Trust	NAP	Trust
Natural Ecosystems and Threatened Species		55,721		55,721
Total		55,721		55,721

Table 2.8.2 Management action targets with a major focus on significant native species in South East Queensland

Management action target
10 percent increase in land managers within the region incorporating biodiversity outcomes into management plans by 2008
Maintain or improve the condition of identified regionally significant areas by 2010
No decrease in the distribution of the 2008 extent of native aquatic flora species
State and regionally significant aquatic ecosystems are protected from inappropriate land use by 2010

Table 2.8.3 Resource condition targets with a major focus on significant native species in South East Queensland

Resource condition target
Improve the extent in the region of currently listed endangered and of concern regional ecosystems by at least 20% (2199ha) by 2025 (147ha/year)
Increase the extent of identified regionally and locally significant areas by 2025
Minimum 24 percent increase (5,793ha) in the 2001 extent (24,139ha) of riparian regional ecosystems in the region by 2025 (579ha/yr for next 10 yrs), including doubling the extent of Eucalyptus tereticornis ecosystems on alluvial plains (RE12.03.03)
No decline in status of regional ecosystems by 2025
No further decline in existing populations of identified priority species and no additions or decline in status of species currently listed as endangered or rare by 2025
Populations of endangered, vulnerable, rare and regionally significant (classified priority under SEQ Biodiversity Planning Assessment) plant and animal species are maintained
River Condition in 2020 is improved from current state through maintenance or restoration of in-stream large woody debris for fish and invertebrates, native trees, shrubs and ground cover on the banks and tree roots to stabilise under-cut banks
The amenity values of the landscape, and the scientific, recreation and tourism values on State land are maintained.
The identified values of Areas of Special Biodiversity Value (under the Biodiversity Planning Assessment) are maintained
The representativeness of regional ecosystems is maintained across the SEQ Regional Vegetation Management Plan area and its subregions (provinces)
The subregional conservation status of Priority Regional Ecosystems is maintained

Table 2.9.1 Management action targets with a major focus on significant invasive species in South East Queensland

Management action target
Management strategies in place for Salvinia, Cabomba, Water Hyacinth, Anchored Water Hyacinth and Hymenachne by 2007
No net increase in distribution of the 2008 extent of identified priority pest animals
No net increase in distribution of the 2008 extent of identified priority weed species
No net increase in the distribution of the 2008 extent of identified priority pest animal species

Table 2.9.2 Resource condition targets with a major focus on significant invasive species in South East Queensland

Resource condition target
Extent and impact of selected ecologically significant marine invasive species extent and impact.
Extent of priority agricultural pests stabilised in priority areas and reduced by 2025
No new pest species introduced into the region and the extent of existing terrestrial biodiversity pest infestation is declining by 2015
The area, extent and density of identified priority weeds being addressed by regional bodies or community projects remains within the boundaries of ecological sustainability

Estuarine, coastal and marine

Table 2.10.1 Activities with a major focus on estuarine, coastal and marine in South East Queensland

Activities	Activity Expenditure (\$)			
	July 04 - June 05		Total to June 05	
	NAP	Trust	NAP	Trust
Implementing coastal management priorities		100,000		100,000
Total		100,000		100,000

Table 2.10.2 Summary of outputs from activities with a major focus on estuarine, coastal and marine in South East Queensland

Outputs	July 04 - June 05			Total to July 05		
	NAP	Trust	Joint	NAP	Trust	Joint
Resource assessment						
Baseline, trend or condition studies for targets						
Number of sites monitored		13			14	
Number of studies		26			26	
Planning						
Integrated catchment or sub-catchment plans						
Not applicable		1			1	
Number of catchment plans developed		1			1	
Capacity building						
Awareness raising activities						
Not applicable		13			13	
Number of brochures developed		3			6	
Number of displays developed		10			11	
Number of field days		4			4	
Number of media opportunities		14			14	
Number of newsletters developed		1			1	
Number of other non-training forums		27			40	
Number of other non-training products or materials developed		12			15	
Number of participants at field days in person-days		16			16	
Number of participants at other non-training forums in person-days		280			410	
Number of participants on study tours in person-days		100			150	
Number of study tours		17			20	
Number of websites developed		4			4	
Quantity distributed		900			1,050	
Quantity of brochures distributed		1,800			1,850	
Quantity of displays distributed		2,000			4,120	
Facilitation motivation and support activities						
Not applicable		10			10	
Number of community groups or community projects assisted		10			13	
Skills and training activities						
Number of other key materials developed		1			1	
Number of other skills and training events held		4			6	
Number of participants at other skills and training events in person-days		180			350	
Number of participants at training sessions in person-days		38			38	
Number of training sessions held		22			22	
On-ground activities						

Outputs	July 04 - June 05			Total to July 05		
	NAP	Trust	Joint	NAP	Trust	Joint
Indigenous vegetation enhanced/rehabilitated						
Area (hectares) of coastal indigenous vegetation enhanced/rehabilitated		0			0	
Not applicable		0			0	
Revegetation with indigenous vegetation						
Area (hectares) planted to coastal indigenous species		0			0	
Not applicable		0			0	
Management of significant species or ecological communities						
Area (hectares) of habitat management		2			2	

Table 2.10.4 Resource condition targets with a major focus on estuarine, coastal and marine in South East Queensland

Resource condition target
No loss in condition of habitat at significant sites of selected estuarine, coastal and marine habitats by 2020
No net loss to the extent and condition of estuarine, coastal and marine habitat extent and distribution by 2020

Target summary

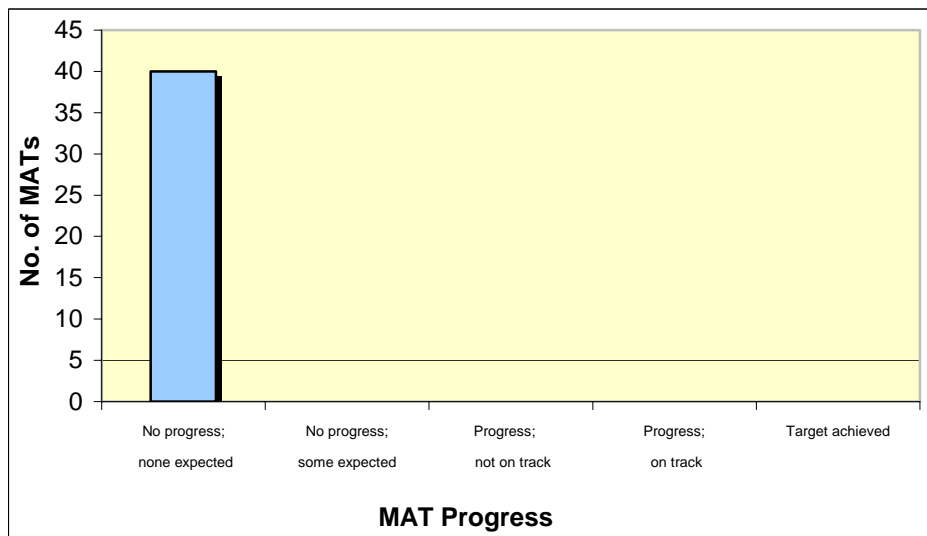
Approved investment strategies detail management action targets (MATs) and resource condition targets (RCTs) targets having a major focus on matters for target, and other supporting activities.

Regions were asked to make an assessment of progress towards the achievement of the targets using the available evidence.

Progress towards achieving each MAT was assessed using the following five-point scale:

- Target achieved or exceeded.
- Progress and on track.
- Progress, but not on track.
- No progress, but some progress was expected.
- No progress, but none expected at this time.

Figure 3.1 Progress towards achieving Management Action Targets in South East Queensland



Progress towards achieving each RCT was assessed using the following five-point scale:

- Evidence of target achieved or exceeded.
- Evidence of progress.
- Evidence of no progress.
- Evidence of regress.
- Insufficient evidence to assess.

Figure 3.2 Progress towards achieving Resource Condition Targets in South East Queensland

