



Regional Summary 2.09

Namoi Region

New South Wales

This Chapter

The first section of the chapter provides an overall summary of investments supported by the NAP and the regional component of the Trust, within the region to 30 June 2005.

The second section summarises the region's investments against the matters for target addressed within the region. This section details the resource condition targets and related management action targets specific to each matter for target addressed through the NAP and the Trust by the region. It also provides a summary of the type of activities supported by these investments and progress in the achievements of these activities to the 30 June 2005.

The third section of the chapter provides the region's assessment of their progress in achieving management action targets and resource condition targets to date, and for those targets anticipated to be achieved during 2004-05.

Sections

1. [Investment summary](#)

2. [Investment summary by matter for target](#)

[Land salinity](#)

[Surface water salinity](#)

[Soil condition](#)

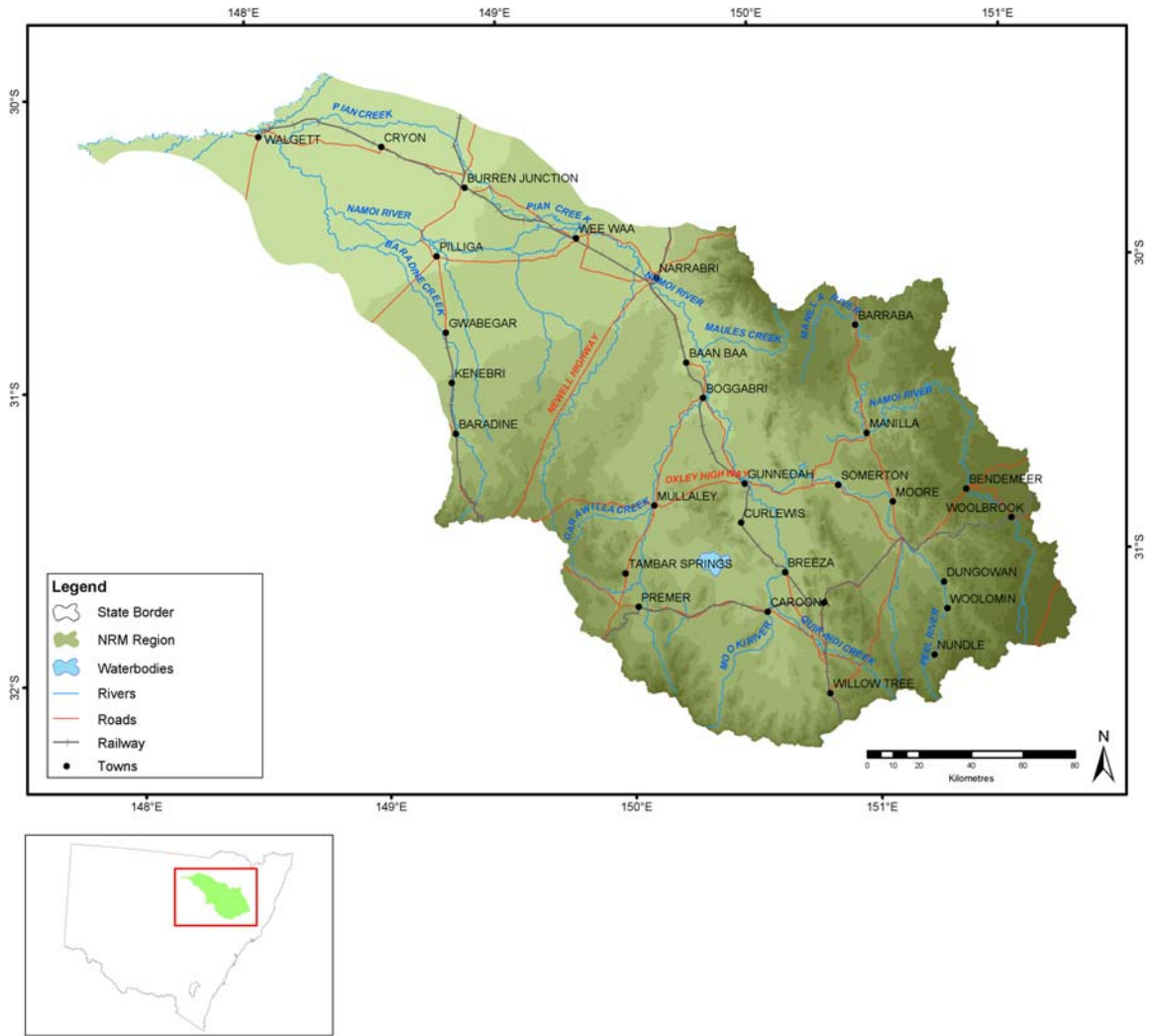
[Native vegetation](#)

[Rivers and wetlands](#)

[Significant native species](#)

3. [Target achievement summary](#)

Administrative arrangements



Administrative Body: Namoi Catchment Management Authority

Trust region: Namoi

NAP region: Namoi

Investment summary

This section provides an overall summary of approved investments and expenditure from the various investment streams.

Where applicable, it also details expenditure related to priority funding and regional investments based from accredited regional plans. For these investments, information is provided in relation to the matters for target addressed and the types of activities undertaken. Commencing this year in 2004-05, apart from in Table 1.1, Table 1.2 and Table 1.3, priority action funding and regional investments will be reported together.

Table 1.1 Reported expenditure for approved investments in Namoi

Funding stream	Activity Expenditure (\$)			
	July 04 - June 05		Total to June 05	
	NAP	Trust	NAP	Trust
Priority action	222,211	82,274	307,803	90,774
Regional investment	892,135	52,500	892,135	52,500
Total	1,114,347	134,774	1,199,939	143,274

Table 1.2 Major focus of reported expenditure in Namoi

Matter for target	Activity Expenditure (\$)			
	July 04 - June 05		Total to June 05	
	NAP	Trust	NAP	Trust
Land Salinity	156,084		156,084	
Soil Condition	87,721		87,721	
Rivers and Wetlands	206,801	8,500	292,393	17,000
Surface Water Salinity		73,774		73,774
Native Vegetation	114,071		114,071	
Significant Native Species	7,144	52,500	7,144	52,500
Other Supporting Activities	542,526		542,526	
Total	1,114,347	134,774	1,199,939	143,274

Table 1.3 Types of activities in Namoi

Activity Type	Activity Expenditure (\$)			
	July 04 - June 05		Total to June 05	
	NAP	Trust	NAP	Trust
Resource assessment	98,854		184,446	
Planning	22,060		22,060	
Capacity building	898,185	8,500	898,185	17,000
On-ground activities	95,248	126,274	95,248	126,274
Total	1,114,347	134,774	1,199,939	143,274

Investment summary by matter for target

Investments supported by the NAP and the regional component of the Trust, undertaken by the region on a priority basis or through approved regional investment strategies are focussed on the matters for target.

This section provides a summary of the major focus of investments and the reported expenditure related to each of these matters for target. In some cases, investments have had a major focus on more than one matter for target and are not able to be attributed to a particular matter for target. Activities that have been classified as 'other supporting activities', have not been reported in this section.

Each summary for a matter for target describes the expenditure of the activities that contribute to the matter for target. It also provides a description of the outputs achieved through these activities to the 30 June 2005.

Where appropriate to regions with approved investment strategies, each summary also details the management action targets and resource condition targets related to each matter for target addressed through the NAP and the Trust by the region. Where a region has an accredited investment plan and approved investment summary, section three of this Regional Summary summarises the region's assessment of progress towards the achievement of these targets.

Land salinity

Table 2.1.1 Activities with a major focus on land salinity in Namoi

Activities	Activity Expenditure (\$)			
	July 04 - June 05		Total to June 05	
	NAP	Trust	NAP	Trust
Property Planning to Address Salinity	2,581		2,581	
Salinity Education Awareness and Communication	16,443		16,443	
Salinity Facilitation and Coordination	80,000		80,000	
Technical Support and On-Ground Works for Salinity	57,060		57,060	
Total	156,084		156,084	

Table 2.1.2 Summary of outputs from activities with a major focus on land salinity in Namoi

Outputs	July 04 - June 05			Total to July 05		
	NAP	Trust	Joint	NAP	Trust	Joint
Capacity building						
Facilitation motivation and support activities						
Number of community groups or community projects assisted	73			85		
Number of FTE active community support positions (facilitators or coordinators)				2		

Table 2.1.3 Management action targets with a major focus on land salinity in Namoi

Management action target
By 2010, cap and pipe high flow bores in the Namoi portion of the Great Artesian Basin
By 2010, to have 60% of land managers and an area of 18600 sq km across the whole of the Namoi catchment managed to minimise the mobilisation of salt to an agreed set of BMPs and in identified hazard areas to increase the adoption rate to 80%
From 2001, retain all vegetation on saline discharging areas and establish an additional 1000 ha of ground cover to be managed at greater than 70% cover

Table 2.1.4 Resource condition targets with a major focus on land salinity in Namoi

Resource condition target
By 2010, to reduce the mobilisation of salt across the whole catchment by ensuring that the area of land affected by a watertable within 2 m of the surface does not exceed the current level – 2,896 ha

Soil condition

Table 2.2.1 Activities with a major focus on soil condition in Namoi

Activities	Activity Expenditure (\$)			
	July 04 - June 05		Total to June 05	
	NAP	Trust	NAP	Trust
Property Planning to Address Soils	7,721		7,721	
Soil Facilitation and Coordination	80,000		80,000	
Total	87,721		87,721	

Table 2.2.2 Summary of outputs from activities with a major focus on soil condition in Namoi

Outputs	July 04 - June 05			Total to July 05		
	NAP	Trust	Joint	NAP	Trust	Joint
Capacity building						
Facilitation motivation and support activities						
Number of community groups or community projects assisted	100			110		
Number of FTE active community support positions (facilitators or coordinators)				2		

Table 2.2.3 Management action targets with a major focus on soil condition in Namoi

Management action target
By 2010, increase the percentage of landholders using conservation management practices from 25% to at least 75%
By 2010, increase the percentage of resource managers implementing integrated property management plans on their properties from 5% to at least 20%
By 2010, increase the percentage of resource managers using land within its capability throughout the catchment to 60% and an area of 18600 sq km and in identified hazard areas to increase the adoption rate to 80%

Table 2.2.4 Resource condition targets with a major focus on soil condition in Namoi

Resource condition target
By 2010, regenerate and rehabilitate at least 4000 km ² (25%) of the land affected by areal erosion (16,000 km ²) throughout the Namoi catchment in strategic, priority areas

Rivers and wetlands

Table 2.3.1 Activities with a major focus on rivers and wetlands in Namoi

Activities	Activity Expenditure (\$)			
	July 04 - June 05		Total to June 05	
	NAP	Trust	NAP	Trust
Best Management Practices (BMP) for the Management of Wetlands and Identification of Environmental Weeds and Pests of the Namoi		8,500		17,000
Education, Awareness and Communication	12,072		12,072	
Identification of Riverine Areas of High Recovery Potential in the Namoi Catchment	98,854		184,446	
Property Planning to Address Water Quality	1,434		1,434	
Technical Support and On-Ground Works for Riverine	14,441		14,441	
Water Quality Facilitation and Coordination	80,000		80,000	
Total	206,801	8,500	292,393	17,000

Table 2.3.2 Summary of outputs from activities with a major focus on rivers and wetlands in Namoi

Outputs	July 04 - June 05			Total to July 05		
	NAP	Trust	Joint	NAP	Trust	Joint
Planning						
Improved practice codes or guidelines						
Number of best management practice guidelines developed	1			1		
Integrated catchment or sub-catchment plans						
Number of catchment plans developed	1			1		
Capacity building						
Facilitation motivation and support activities						
Number of community groups or community projects assisted	66			75		
Number of FTE active community support positions (facilitators or coordinators)				2		
On-ground activities						
Indigenous vegetation enhanced/rehabilitated						
Streambank length (km) of riparian indigenous vegetation enhanced/rehabilitated	8			8		

Table 2.3.3 Management action targets with a major focus on rivers and wetlands in Namoi

Management action target
By 2005 have water sharing plans for all rivers, stream and groundwater resources that deliver river flow and water quality objectives to sustain healthy riverine ecosystems through out the catchment
By 2010 maintain water extraction in groundwater management areas within the ecological sustainable yield of the aquifer
By 2010, establish 100 km of native riparian vegetation along both banks of rivers, streams and wetlands in areas of high recovery potential to improve riverine ecosystem health
By 2010, reduce structural degradation of streams by using environmentally sympathetic engineering solutions at 50 strategic locations
From 2002, manage all riparian vegetation along all rivers, streams and wetland areas in the Namoi to maintain riverine ecosystem health

Table 2.3.4 Resource condition targets with a major focus on rivers and wetlands in Namoi

Resource condition target
By 2010, have a 5% improvement in the average Riverine Assessment Index for riverine condition with no deterioration in the current state of any sub-catchment

Surface water salinity

Table 2.4.1 Activities with a major focus on surface water salinity in Namoi

Activities	Activity Expenditure (\$)			
	July 04 - June 05		Total to June 05	
	NAP	Trust	NAP	Trust
Mitigating Water Quality Decline Through the Management of Point Source Salinity and Gully Erosion		73,774		73,774
Total		73,774		73,774

Table 2.4.2 Summary of outputs from activities with a major focus on surface water salinity in Namoi

Outputs	July 04 - June 05			Total to July 05		
	NAP	Trust	Joint	NAP	Trust	Joint
Resource assessment						
Investigations (survey, inventory and mapping and data analysis)						
Number of salinity studies					1	
On-ground activities						
Soil management						
Number of soil erosion engineering sites		4			4	

Table 2.4.3 Management action targets with a major focus on surface water salinity in Namoi

Management action target
By 2010 to have all land managers (including urban) using better management practices throughout the catchment to minimise the mobilisation of salt to rivers
By 2010, existing point sources of river salinity to have a reduction of 10% on current salt loads
By 2010, halt existing gully erosion and bed lowering within priority salinity sub-catchments by constructing 1000 gully control and bed lowering structures to reduce the mobilisation of salt to the river
From 2001 new investment, requiring a Development application or requiring approval under Part 5 of EP&A Act, to result in no net increase in salt load to the river

Table 2.4.4 Resource condition targets with a major focus on surface water salinity in Namoi

Resource condition target
By 2010, median salinity levels in the Namoi River at Goangra should not exceed 550 $\mu\text{s}/\text{cm}$ and levels should not exceed 1000 $\mu\text{s}/\text{cm}$ more than 20% of the time
By 2010, the median salt load at Goangra should not exceed 11,000 tonnes and level should not exceed 315,000 tonnes more than 20% of the time

Native vegetation

Table 2.5.1 Activities with a major focus on native vegetation in Namoi

Activities	Activity Expenditure (\$)			
	July 04 - June 05		Total to June 05	
	NAP	Trust	NAP	Trust
Biodiversity Facilitator and Coordinator for Namoi	80,000		80,000	
Property Vegetation Planning	10,324		10,324	
Technical Support and On-Ground Works for Biodiversity	23,747		23,747	
Total	114,071		114,071	

Table 2.5.2 Summary of outputs from activities with a major focus on native vegetation in Namoi

Outputs	July 04 - June 05			Total to July 05		
	NAP	Trust	Joint	NAP	Trust	Joint
Capacity building						
Facilitation motivation and support activities						
Number of FTE active community support positions (facilitators or coordinators)				2		

Table 2.5.3 Management action targets with a major focus on native vegetation in Namoi

Management action target
By 2010 a minimum of 15% (6300 sq km) of the catchment will be managed for conservation. The 15% is to be made up from 3150 sq km of public lands and 3150 sq km of private land
By 2010, maintain and manage the extent of existing (2001) native vegetation communities within each bioregion within the Namoi catchment by the adoption of management principles that improve condition
By 2010, maintain and manage the extent of high conservation value vegetation as identified and defined by regional vegetation and water management committees
By 2010, support the maintenance of or improve biodiversity with strategic native revegetation of an additional 10000 ha

Table 2.5.4 Resource condition targets with a major focus on native vegetation in Namoi

Resource condition target
By 2010, secure bio-diversity by ensuring that the level of native vegetation cover as at March 2001 (currently estimated at 62%) is maintained across the Namoi catchment with at least 15% of the catchment managed for conservation

Significant native species

Table 2.6.1 Activities with a major focus on significant native species in Namoi

Activities	Activity Expenditure (\$)			
	July 04 - June 05		Total to June 05	
	NAP	Trust	NAP	Trust
NREM Education and Awareness	7,144		7,144	
Removal of Barriers to Fish Passage		52,500		52,500
Total	7,144	52,500	7,144	52,500

Table 2.6.2 Management action targets with a major focus on significant native species in Namoi

Management action target
By 2010, protect native aquatic biodiversity through the maintenance of appropriate water quality, temperature and flow, the removal of barriers to fish passage and the control of aquatic pest and weed species in all of the Namoi catchment

Target summary

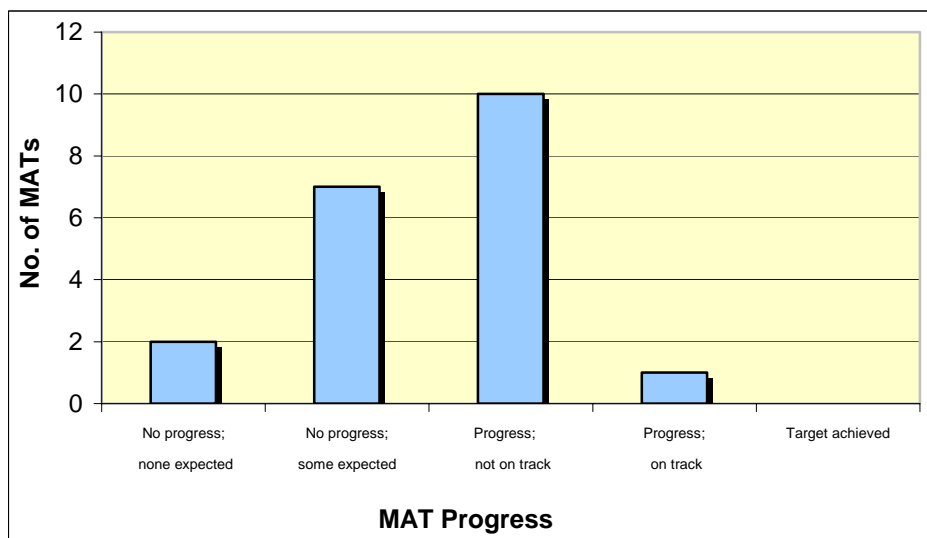
Approved investment strategies detail management action targets (MATs) and resource condition targets (RCTs) targets having a major focus on matters for target, and other supporting activities.

Regions were asked to make an assessment of progress towards the achievement of the targets using the available evidence.

Progress towards achieving each MAT was assessed using the following five-point scale:

- Target achieved or exceeded.
- Progress and on track.
- Progress, but not on track.
- No progress, but some progress was expected.
- No progress, but none expected at this time.

Figure 3.1 Progress towards achieving Management Action Targets in Namoi



Progress towards achieving each RCT was assessed using the following five-point scale:

- Evidence of target achieved or exceeded.
- Evidence of progress.
- Evidence of no progress.
- Evidence of regress.
- Insufficient evidence to assess.

Figure 3.2 Progress towards achieving Resource Condition Targets in Namoi

