



Regional Summary 2.08

Murrumbidgee Region

New South Wales

This Chapter

The first section of the chapter provides an overall summary of investments supported by the NAP and the regional component of the Trust, within the region to 30 June 2005.

The second section summarises the region's investments against the matters for target addressed within the region. This section details the resource condition targets and related management action targets specific to each matter for target addressed through the NAP and the Trust by the region. It also provides a summary of the type of activities supported by these investments and progress in the achievements of these activities to the 30 June 2005.

The third section of the chapter provides the region's assessment of their progress in achieving management action targets and resource condition targets to date, and for those targets anticipated to be achieved during 2004-05.

Sections

1. [Investment summary](#)

2. [Investment summary by matter for target](#)

[Land salinity](#)

[Surface water salinity](#)

[Soil condition](#)

[Native vegetation](#)

[Rivers and wetlands](#)

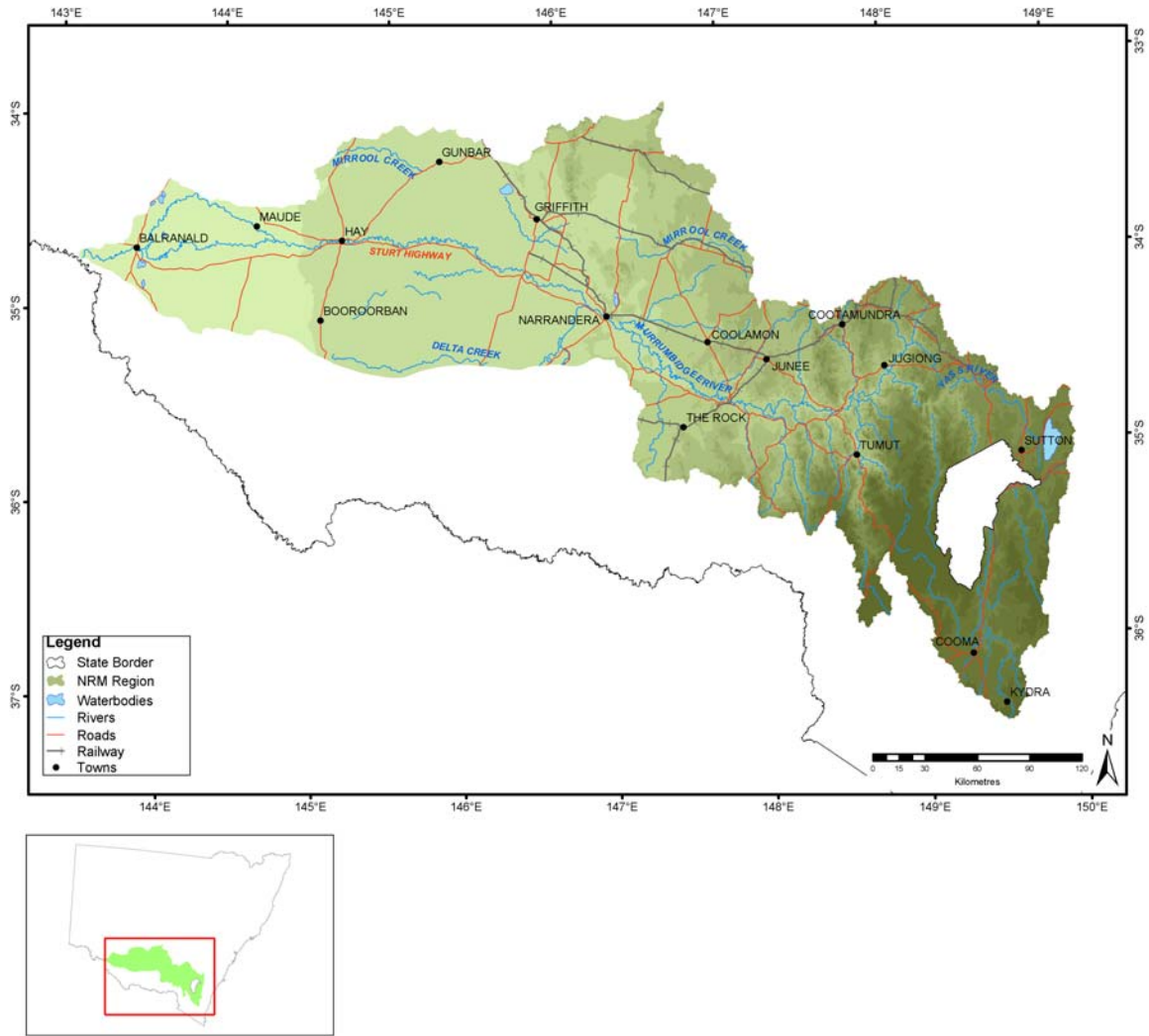
[Significant native species](#)

[Nutrients in aquatic environments](#)

[Turbidity in aquatic environments](#)

3. [Target achievement summary](#)

Administrative arrangements



Administrative Body: Murrumbidgee Catchment Management Authority

Trust region: Murrumbidgee

NAP region: Murrumbidgee

Investment summary

This section provides an overall summary of approved investments and expenditure from the various investment streams.

Where applicable, it also details expenditure related to priority funding and regional investments based from accredited regional plans. For these investments, information is provided in relation to the matters for target addressed and the types of activities undertaken. Commencing this year in 2004-05, apart from in Table 1.1, Table 1.2 and Table 1.3, priority action funding and regional investments will be reported together.

Table 1.1 Reported expenditure for approved investments in Murrumbidgee

Funding stream	Activity Expenditure (\$)			
	July 04 - June 05		Total to June 05	
	NAP	Trust	NAP	Trust
Priority action	3,450,584	287,690	10,646,732	287,690
Regional investment	1,842,911		1,842,911	
Regional competitive		167,862		167,862
Total	5,293,495	455,552	12,489,643	455,552

Table 1.2 Major focus of reported expenditure in Murrumbidgee

Matter for target	Activity Expenditure (\$)			
	July 04 - June 05		Total to June 05	
	NAP	Trust	NAP	Trust
Land Salinity	1,333,580		2,956,862	
Soil Condition	99,518	167,862	99,518	167,862
Rivers and Wetlands	1,675,916		4,462,349	
Surface Water Salinity	1,300,091		4,086,524	
Native Vegetation		259,159		259,159
Significant Native Species	57,500	28,531	57,500	28,531
Other Supporting Activities	826,890		826,890	
Total	5,293,495	455,552	12,489,643	455,552

Table 1.3 Types of activities in Murrumbidgee

Activity Type	Activity Expenditure (\$)			
	July 04 - June 05		Total to June 05	
	NAP	Trust	NAP	Trust
Resource assessment	372,089	28,531	372,089	28,531
Planning	7,310		7,310	
Capacity building	1,598,063		3,021,745	
On-ground activities	3,316,033	427,021	9,088,499	427,021
Total	5,293,495	455,552	12,489,643	455,552

Investment summary by matter for target

Investments supported by the NAP and the regional component of the Trust, undertaken by the region on a priority basis or through approved regional investment strategies are focussed on the matters for target.

This section provides a summary of the major focus of investments and the reported expenditure related to each of these matters for target. In some cases, investments have had a major focus on more than one matter for target and are not able to be attributed to a particular matter for target. Activities that have been classified as 'other supporting activities', have not been reported in this section.

Each summary for a matter for target describes the expenditure of the activities that contribute to the matter for target. It also provides a description of the outputs achieved through these activities to the 30 June 2005.

Where appropriate to regions with approved investment strategies, each summary also details the management action targets and resource condition targets related to each matter for target addressed through the NAP and the Trust by the region. Where a region has an accredited investment plan and approved investment summary, section three of this Regional Summary summarises the region's assessment of progress towards the achievement of these targets.

Land salinity

Table 2.1.1 Activities with a major focus on land salinity in Murrumbidgee

Activities	Activity Expenditure (\$)			
	July 04 - June 05		Total to June 05	
	NAP	Trust	NAP	Trust
Agro-forestry for Groundwater Interception	41,922		41,922	
Developing and Implementing Best Management Practices for Dryland Cropping Systems to Achieve Improved Soil and Water Management	79,846		79,846	
Establishment and Improved Management of Perennial Pastures for Persistence Groundcover and Control of Degradation Particularly Dryland Salinity	188,501		188,501	
Grain and Graze	44,827		44,827	
Implementation of Heads of Agreement Between NSW Government and Communities of Coleambally, Kerarbury and Coleambally Outfall	646,500		2,070,182	
Kyeamba Valley Targeted Salinity and Water Quality Control Program	308,823		508,423	
Profitable Animal Production From Perennials	15,851		15,851	
Strategy to Assess and Prioritise the Extent and Impact of Urban Salinity on High Value Infrastructure in Urban Centres in the Murrumbidgee Catchment	7,310		7,310	
Total	1,333,580		2,956,862	

Table 2.1.2 Summary of outputs from activities with a major focus on land salinity in Murrumbidgee

Outputs	July 04 - June 05			Total to July 05		
	NAP	Trust	Joint	NAP	Trust	Joint
Resource assessment						
Baseline, trend or condition studies for targets						
Number of sites monitored	5			5		
Number of studies	3			6		
Investigations (survey, inventory and mapping and data analysis)						
Area (hectares) surveyed by soil studies	5,500			9,000		
Number of other studies	30			60		
Research and development studies						
Number of research and development studies undertaken	1			2		
Planning						
Integrated catchment or sub-catchment plans						
Number of sub-catchment plans developed	1			1		
Property management plans						
Number of property management plans completed	60			110		
Capacity building						
Skills and training activities						
Number of training sessions held	5			5		
On-ground activities						
Revegetation with exotic vegetation						
Area (hectares) of terrestrial exotic perennial pastures	200			200		
Water use efficiency						
Number of land managers using improved irrigation practices	14			40		

Outputs	July 04 - June 05			Total to July 05		
	NAP	Trust	Joint	NAP	Trust	Joint
Number of on-farms reuse systems	52			100		

Table 2.1.3 Management action targets with a major focus on land salinity in Murrumbidgee

Management action target
Protection of selected high value infrastructure sites using engineering solutions that aim to reduce the water table level to at least 2 metres below the ground surface
Rehabilitate 60% of severe and moderate saline discharge sites in the twelve priority sub-catchments of the Murrumbidgee

Soil condition

Table 2.2.1 Activities with a major focus on soil condition in Murrumbidgee

Activities	Activity Expenditure (\$)			
	July 04 - June 05		Total to June 05	
	NAP	Trust	NAP	Trust
Benchmarking and Understanding Soil Chemistry to Better Manage Acidity Salinity Sodicity and Soil Structure	99,518		99,518	
Total	99,518		99,518	

Table 2.2.2 Summary of outputs from activities with a major focus on soil condition in Murrumbidgee

Outputs	July 04 - June 05			Total to July 05		
	NAP	Trust	Joint	NAP	Trust	Joint
Capacity building						
Skills and training activities						
Number of participants at workshops in person-days	40			40		
Number of workshops held	2			2		

Table 2.2.3 Management action targets with a major focus on soil condition in Murrumbidgee

Management action target
For farmed sands and sandy loams west of Wagga Wagga, lift and maintain a minimum of 50% groundcover for nine months of the year
Increase adoption of best management practices to achieve 80% water efficiency
To lift the percentages of perennials in the pasture phase of farming systems (land classes I to IV) from 10% to 50%; and non arable land (land classes V to VII) from 40 to 80% except for farming systems west of Narrandera
To lift to and maintain a minimum of 70% groundcover for nine months of the year on land classes I, II, and III.
To lift to and maintain a minimum of 70% groundcover for ten months of the year on land classes IV, V and VI
To lift to, and maintain topsoil at pH 5.0 (using Calcium Chloride test) on land classes I, II, III and IV

Table 2.2.4 Resource condition targets with a major focus on soil condition in Murrumbidgee

Resource condition target
By 2012 improve soil health across the catchment by:
<input type="checkbox"/> Increasing the adoption of perennial pasture by 40% across land used for agricultural production
<input type="checkbox"/> Increasing the duration of groundcover levels above 70%, and 50% for sandy loams

Rivers and wetlands

Table 2.3.1 Activities with a major focus on rivers and wetlands in Murrumbidgee

Activities	Activity Expenditure (\$)			
	July 04 - June 05		Total to June 05	
	NAP	Trust	NAP	Trust
Feasibility Study to Achieve Water Savings in the Murrumbidgee Valley	1,201,000		3,987,433	
Riparian Restoration	260,388		260,388	
Riverine Assessment	214,528		214,528	
Total	1,675,916		4,462,349	

Table 2.3.2 Summary of outputs from activities with a major focus on rivers and wetlands in Murrumbidgee

Outputs	July 04 - June 05			Total to July 05		
	NAP	Trust	Joint	NAP	Trust	Joint
Resource assessment						
Investigations (survey, inventory and mapping and data analysis)						
Number of surface water / inland aquatic studies	1			1		

Table 2.3.3 Management action targets with a major focus on rivers and wetlands in Murrumbidgee

Management action target
By 2015 reduce the water quality impacts of urban, industrial and rural residential development throughout the Murrumbidgee Catchment by 2005
Improve native vegetation condition in 90% of the floodplain billabongs to restore their natural capacity to filter sediment.
Manage water quality impacts resulting from storage and weir operations

Nutrients in aquatic environments

Table 2.4.1 Management action targets with a major focus on nutrients in aquatic environments in Murrumbidgee

Management action target
Protect and enhance 1500km of streambank using native riparian vegetation for bank stabilisation and runoff filtration

Turbidity in aquatic environments

Table 2.5.1 Management action targets with a major focus on turbidity in aquatic environments in Murrumbidgee

Management action target
Along those stream reaches, which yield the highest sediment and nutrient loads, control streambank and gully erosion using structural control works covering a total length of fifty kilometres

Table 2.5.2 Resource condition targets with a major focus on turbidity in aquatic environments in Murrumbidgee

Resource condition target
By 2012, in the Murrumbidgee River and its main tributaries, suspended sediment levels will be reduced so that they meet the interim NSW Water Quality Objectives. Flows and water extractions will be managed to maintain or improve river health consis

Surface water salinity

Table 2.6.1 Activities with a major focus on surface water salinity in Murrumbidgee

Activities	Activity Expenditure (\$)			
	July 04 - June 05		Total to June 05	
	NAP	Trust	NAP	Trust
Defining and Prioritising Saline Sub-catchments	543		543	
Implementation of MIA EnviroWise (Previously MIA&D Community Land and Water Management Plan)	1,201,000		3,987,433	
Jugiong Creek Salinity and Water Quality	35,037		35,037	
Muttama Creek Salinity and Water Quality	39,730		39,730	
Yass River Salinity and Water Quality	23,781		23,781	
Total	1,300,091		4,086,524	

Table 2.6.2 Summary of outputs from activities with a major focus on surface water salinity in Murrumbidgee

Outputs	July 04 - June 05			Total to July 05		
	NAP	Trust	Joint	NAP	Trust	Joint
Resource assessment						
Baseline, trend or condition studies for targets						
Number of studies	3			6		
Investigations (survey, inventory and mapping and data analysis)						
Number of soil studies	30			55		
Research and development studies						
Number of research and development studies undertaken	1			2		
Planning						
Improved practice codes or guidelines						
Number of best management practice guidelines developed	1			1		
Property management plans						
Number of property management plans completed	170			640		
Capacity building						
Facilitation motivation and support activities						
Number of FTE active community support positions (facilitators or coordinators)	2			3		
On-ground activities						
Indigenous vegetation enhanced/rehabilitated						
Area (hectares) of terrestrial indigenous vegetation enhanced/rehabilitated	52			52		
Revegetation with exotic vegetation						
Area (hectares) of terrestrial exotic perennial pastures	66			75		
Salinity control measures						
Area (hectares) of land treated for rising groundwater through sub-surface drainage	19			19		
Water use efficiency						
Number of land managers using improved irrigation practices	34			240		
Number of land managers using on-farm water saving practice by drainage diversion	1			2		
Number of on-farms reuse systems	45			150		

Table 2.6.3 Management action targets with a major focus on surface water salinity in Murrumbidgee

Management action target
Increase perennial vegetation in the 12 priority Murrumbidgee sub-catchments with the aim of reducing the predicted mean annual mid catchment salt load by 12,000 tonnes at Wagga by 2010
Irrigation Areas. To reduce the current salt load from the Murrumbidgee Irrigation Area to the river from its current level of about 5,000 tonnes per year to 3000 tonnes per year

Table 2.6.4 Resource condition targets with a major focus on surface water salinity in Murrumbidgee

Resource condition target
By 2015 target of less than 245 EC for 50% of the time and less than 320 EC for 80% of the time at Balranald

Native vegetation

Table 2.7.1 Activities with a major focus on native vegetation in Murrumbidgee

Activities	Activity Expenditure (\$)			
	July 04 - June 05		Total to June 05	
	NAP	Trust	NAP	Trust
Protection and Enhancement of Native Vegetation in the Murrumbidgee Catchment.		259,159		259,159
Total		259,159		259,159

Table 2.7.2 Summary of outputs from activities with a major focus on native vegetation in Murrumbidgee

Outputs	July 04 - June 05			Total to July 05		
	NAP	Trust	Joint	NAP	Trust	Joint
On-ground activities						
Indigenous vegetation enhanced/rehabilitated						
Area (hectares) of terrestrial indigenous vegetation enhanced/rehabilitated		6,700			6,700	
Management of significant species or ecological communities						
Number of seedbanks managed		1			1	
Weight (kg) of seeds collected		130			160	

Table 2.7.3 Management action targets with a major focus on native vegetation in Murrumbidgee

Management action target
All areas of identified high conservation value will be managed for conservation by 2012.
Enhance and increase both Regionally Endangered and Vulnerable vegetation communities by a minimum of 10% of their remaining extent by 2012.
Regionally Depleted or Well Retained vegetation communities will have 30% of their respective original (c.1750) areas managed for conservation by 2012.

Table 2.7.4 Resource condition targets with a major focus on native vegetation in Murrumbidgee

Resource condition target
Manage for biodiversity conservation a minimum of 30% of the remaining area of each of the native vegetation communities and related habitats (including high conservation value) of the Murrumbidgee Catchment by 2012 and improve the extent, diversity

Significant native species

Table 2.8.1 Activities with a major focus on significant native species in Murrumbidgee

Activities	Activity Expenditure (\$)			
	July 04 - June 05		Total to June 05	
	NAP	Trust	NAP	Trust
Identify and Locate High Conservation Value Terrestrial and Aquatic Sites Within the Murrumbidgee Catchment		28,531		28,531
Integrated Fish Monitoring	57,500		57,500	
Total	57,500	28,531	57,500	28,531

Table 2.8.2 Summary of outputs from activities with a major focus on significant native species in Murrumbidgee

Outputs	July 04 - June 05			Total to July 05		
	NAP	Trust	Joint	NAP	Trust	Joint
Resource assessment						
Baseline, trend or condition studies for targets						
Number of studies	0			1		
Investigations (survey, inventory and mapping and data analysis)						
Number of vegetation studies		0			1	

Table 2.8.3 Management action targets with a major focus on significant native species in Murrumbidgee

Management action target
Maintain diversity (as described in the NSW Biodiversity Strategy) of indigenous aquatic biota and processes by: 1) A reduction in the species diversity ratio of alien to native fish by 25%

Target summary

16

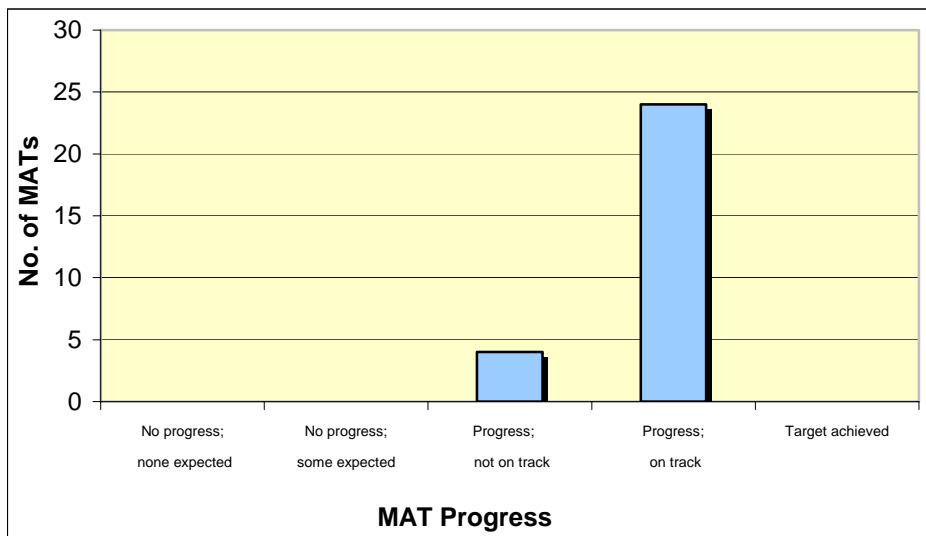
Approved investment strategies detail management action targets (MATs) and resource condition targets (RCTs) targets having a major focus on matters for target, and other supporting activities.

Regions were asked to make an assessment of progress towards the achievement of the targets using the available evidence.

Progress towards achieving each MAT was assessed using the following five-point scale:

- Target achieved or exceeded.
- Progress and on track.
- Progress, but not on track.
- No progress, but some progress was expected.
- No progress, but none expected at this time.

Figure 3.1 Progress towards achieving Management Action Targets in Murrumbidgee



Progress towards achieving each RCT was assessed using the following five-point scale:

- Evidence of target achieved or exceeded.
- Evidence of progress.
- Evidence of no progress.
- Evidence of regress.
- Insufficient evidence to assess.

Figure 3.2 Progress towards achieving Resource Condition Targets in Murrumbidgee

