



Regional Summary 2.07

Murray Region

New South Wales

This Chapter

The first section of the chapter provides an overall summary of investments supported by the NAP and the regional component of the Trust, within the region to 30 June 2005.

The second section summarises the region's investments against the matters for target addressed within the region. This section details the resource condition targets and related management action targets specific to each matter for target addressed through the NAP and the Trust by the region. It also provides a summary of the type of activities supported by these investments and progress in the achievements of these activities to the 30 June 2005.

The third section of the chapter provides the region's assessment of their progress in achieving management action targets and resource condition targets to date, and for those targets anticipated to be achieved during 2004-05.

Sections

1. [Investment summary](#)

2. [Investment summary by matter for target](#)

[Land salinity](#)

[Surface water salinity](#)

[Soil condition](#)

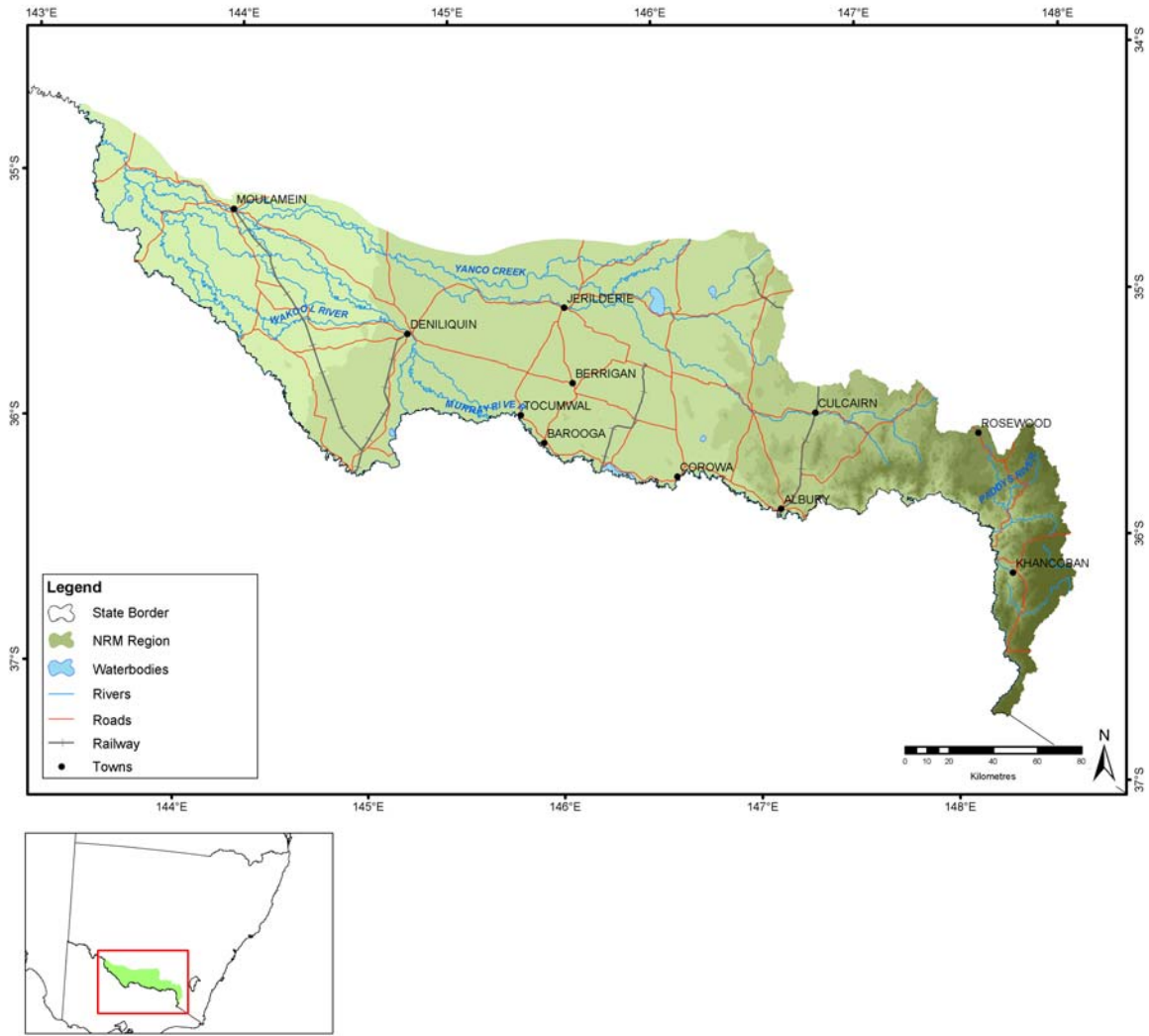
[Native vegetation](#)

[Significant native species](#)

[Turbidity in aquatic environments](#)

3. [Target achievement summary](#)

Administrative arrangements



Administrative Body: Murray Catchment Management Authority

Trust region: Murray

NAP region: Murray

Investment summary

This section provides an overall summary of approved investments and expenditure from the various investment streams.

Where applicable, it also details expenditure related to priority funding and regional investments based from accredited regional plans. For these investments, information is provided in relation to the matters for target addressed and the types of activities undertaken. Commencing this year in 2004-05, apart from in Table 1.1, Table 1.2 and Table 1.3, priority action funding and regional investments will be reported together.

Table 1.1 Reported expenditure for approved investments in Murray

Funding stream	Activity Expenditure (\$)			
	July 04 - June 05		Total to June 05	
	NAP	Trust	NAP	Trust
Priority action	265,838	233,053	9,839,528	1,069,413
Regional investment	11,011,730	25,312	11,011,730	25,312
Regional competitive		373,300		373,300
Total	11,277,568	631,664	20,851,258	1,468,024

Table 1.2 Major focus of reported expenditure in Murray

Matter for target	Activity Expenditure (\$)			
	July 04 - June 05		Total to June 05	
	NAP	Trust	NAP	Trust
Land Salinity	10,317,123		19,890,813	
Soil Condition		133,000		575,545
Native Vegetation	173,042	82,188	173,042	412,751
Significant Native Species		416,165		479,417
Other Supporting Activities	787,403	312	787,403	312
Total	11,277,568	631,664	20,851,258	1,468,024

Table 1.3 Types of activities in Murray

Activity Type	Activity Expenditure (\$)			
	July 04 - June 05		Total to June 05	
	NAP	Trust	NAP	Trust
Resource assessment		25,000		25,000
Planning		312		312
Capacity building	787,403		787,403	
On-ground activities	10,490,165	606,353	20,063,855	1,442,713
Total	11,277,568	631,664	20,851,258	1,468,024

Investment summary by matter for target

Investments supported by the NAP and the regional component of the Trust, undertaken by the region on a priority basis or through approved regional investment strategies are focussed on the matters for target.

This section provides a summary of the major focus of investments and the reported expenditure related to each of these matters for target. In some cases, investments have had a major focus on more than one matter for target and are not able to be attributed to a particular matter for target. Activities that have been classified as 'other supporting activities', have not been reported in this section.

Each summary for a matter for target describes the expenditure of the activities that contribute to the matter for target. It also provides a description of the outputs achieved through these activities to the 30 June 2005.

Where appropriate to regions with approved investment strategies, each summary also details the management action targets and resource condition targets related to each matter for target addressed through the NAP and the Trust by the region. Where a region has an accredited investment plan and approved investment summary, section three of this Regional Summary summarises the region's assessment of progress towards the achievement of these targets.

Land salinity

Table 2.1.1 Activities with a major focus on land salinity in Murray

Activities	Activity Expenditure (\$)			
	July 04 - June 05		Total to June 05	
	NAP	Trust	NAP	Trust
Murray Land and Water Management Plans			9,260,930	
Murray Region Land and Water Management Plans	9,584,470		9,584,470	
On Farm Implementation - Upper Murray	84,997		84,997	
On-farm Implementation - Central Riverina	47,487		47,487	
On-farm Implementation - Culcairn	40,790		40,790	
On-farm Implementation - Holbrook	172,552		172,552	
On-farm Implementation - Hume	114,987		114,987	
On-farm Implementation - Murrakool and Western Billabong	33,310		33,310	
On-farm Implementation - West Corrgan	114,238		114,238	
Targeted Implementation of the Murray Catchment Blueprint Within the South West Slopes Management Unit	124,293		437,053	
Total	10,317,123		19,890,813	

Table 2.1.2 Summary of outputs from activities with a major focus on land salinity in Murray

Outputs	July 04 - June 05			Total to July 05		
	NAP	Trust	Joint	NAP	Trust	Joint
Resource assessment						
Baseline, trend or condition studies for targets						
Number of sites monitored	17			56		
Investigations (survey, inventory and mapping and data analysis)						
Number of vegetation studies	180			220		
Research and development studies						
Number of research and development studies undertaken	15			26		
Planning						
Property management plans						
Number of property management plans completed	79			380		
Capacity building						
Awareness raising activities						
Number of field days	15			32		
Number of newsletters developed				17		
Number of participants at field days in person-days	460			1,020		
Number of participants on study tours in person-days				100		
Number of study tours				4		
Quantity of newsletters distributed				6,400		
Skills and training activities						
Number of other skills and training events held				12		
Number of participants at other skills and training events in person-days				120		
Number of participants at workshops in person-days	230			330		
Number of training sessions held	4			4		
Number of workshops held	13			18		
On-ground activities						
Indigenous vegetation protected by fencing						

Outputs	July 04 - June 05			Total to July 05		
	NAP	Trust	Joint	NAP	Trust	Joint
Area (hectares) of terrestrial indigenous vegetation protected by fencing	290		330	360		330
Indigenous vegetation enhanced/rehabilitated						
Area (hectares) of riparian indigenous vegetation enhanced/rehabilitated			7			7
Streambank length (km) of riparian indigenous vegetation enhanced/rehabilitated			1			1
Revegetation with indigenous vegetation						
Area (hectares) planted to terrestrial indigenous species	270		66	440		66
Revegetation with exotic vegetation						
Area (hectares) of other terrestrial exotic or mixed indigenous/exotic vegetation planted	5			5		
Area (hectares) of terrestrial exotic perennial pastures	2,740		200	9,320		200
Area (hectares) of terrestrial exotic plantation	76			95		
Riparian and waterway health						
Length (km) of stream bank stabilised			0			0
Management of significant species or ecological communities						
Area (hectares) of habitat management	2,640			3,820		
Salinity control measures						
Area (hectares) of land treated for rising groundwater through surface drainage				52,000		
Length (km) of surface drain				190		
Water use efficiency						
Number of on-farms reuse systems	70			320		
Volume (ML) of water saved using off-farm water mechanisms				1,650		

Table 2.1.3 Management action targets with a major focus on land salinity in Murray

Management action target
By 2012, establish 185,000 hectares of perennial pastures (both introduced and native) in appropriate landscape units within the salinity priority area
By 2012, reduce groundwater leakage by improving landholder skills, knowledge, and water management - By 2008, 1,741 (80%) of commercial irrigation properties preparing whole farm plans within the Berriquin, Denimein, Cadell and Wakool LWMP areas and
By 2012, reduce groundwater leakage by improving landholder skills, knowledge, and water management - By 2010, 1,741 (80%) of commercial irrigation properties installing on-farm drainage and re-use systems within the Berriquin, Denimein, Cadell and W
By 2012, reduce groundwater leakage by improving landholder skills, knowledge, and water management by ensuring all commercial irrigation landholders in Berriquin (1167) and 95% of commercial landholders in Cadell (754) have completed LWMP training p
By 2012, reduce groundwater leakage by improving landholder skills, knowledge, and water management by increasing by 50% the number of dryland landholders currently undertaking a whole farm approach to addressing dryland salinity
By 2012, reduce groundwater leakage by improving landholder skills, knowledge, and water management by promoting grazing management strategies to enhance the water use characteristics and productivity of existing perennial native and annual pastures
To establish 23,800 ha targeted predominantly woody vegetation in the salinity priority areas by 2012

Soil condition

Table 2.2.1 Activities with a major focus on soil condition in Murray

Activities	Activity Expenditure (\$)			
	July 04 - June 05		Total to June 05	
	NAP	Trust	NAP	Trust
On-ground Works for the South West Slopes Management Unit.		133,000		575,545
Total		133,000		575,545

Table 2.2.2 Summary of outputs from activities with a major focus on soil condition in Murray

Outputs	July 04 - June 05			Total to July 05		
	NAP	Trust	Joint	NAP	Trust	Joint
On-ground activities						
Indigenous vegetation protected by fencing						
Area (hectares) of terrestrial indigenous vegetation protected by fencing		350			440	
Indigenous vegetation enhanced/rehabilitated						
Area (hectares) of riparian indigenous vegetation enhanced/rehabilitated		130			160	
Revegetation with indigenous vegetation						
Area (hectares) planted to terrestrial indigenous species		200			250	
Revegetation with exotic vegetation						
Area (hectares) of other terrestrial exotic or mixed indigenous/exotic vegetation planted		15			19	
Area (hectares) of terrestrial exotic perennial pastures		880			1,100	
Area (hectares) of terrestrial exotic plantation		26			32	
Riparian and waterway health						
Length (km) of stream bank stabilised		10			11	

Table 2.2.3 Management action targets with a major focus on soil condition in Murray

Management action target
Increase by 50% the current number (2001) of landholders who will be actively managing soil acidity as part of their whole farm management by 2012
To increase the current level of perennial pasture (including natives) cover by 249,000 ha in cropping and grazing systems in selected areas by 2012

Table 2.2.4 Resource condition targets with a major focus on soil condition in Murray

Resource condition target
To maintain or enhance soil health using soil acidity as an indicator to increase and then maintain the topsoil pH to 5 or greater (measured in CaCl ₂) from 58% to 61% of the area within the Murray Catchment by 2012

Turbidity in aquatic environments

Table 2.3.1 Management action targets with a major focus on turbidity in aquatic environments in Murray

Management action target
Improving riparian vegetation to stabilise riverbanks and to trap sediment
Undertaking soil erosion management on those sites identified as suffering from accelerated erosion and key contributors to sediment yield.

Table 2.3.2 Resource condition targets with a major focus on turbidity in aquatic environments in Murray

Resource condition target
Interim target currently being developed is defined as: Progressive reduction from 2002 levels in the average annual quantity of sediment entering rivers from the landscape and being transported between reaches as suspended sediment and bedload.

Surface water salinity

Table 2.4.1 Management action targets with a major focus on surface water salinity in Murray

Management action target
By 2012, reduce both salt concentration and saline run-off by remediation works on 60% (270ha) of known saline discharge sites

Table 2.4.2 Resource condition targets with a major focus on surface water salinity in Murray

Resource condition target
A return to average 2000 salinity concentration level at the Murray River downstream of the Wakool River junction by 2020, allowing for a limited 3% increase in the salt load concentration (median and 80th percentile) by 2012

Native vegetation

Table 2.5.1 Activities with a major focus on native vegetation in Murray

Activities	Activity Expenditure (\$)			
	July 04 - June 05		Total to June 05	
	NAP	Trust	NAP	Trust
Management of Linear Road Reserves	23,250		23,250	
Regional Seedbanks - Meeting the Demand for Revegetation		82,188		412,751
Seedbank Extension Project	149,792		149,792	
Total	173,042	82,188	173,042	412,750

Table 2.5.2 Summary of outputs from activities with a major focus on native vegetation in Murray

Outputs	July 04 - June 05			Total to July 05		
	NAP	Trust	Joint	NAP	Trust	Joint
Capacity building						
Awareness raising activities						
Number of other non-training products or materials developed	1	1		1	1	
Quantity of other non-training products or materials distributed		1			1	
On-ground activities						
Indigenous vegetation protected by fencing						
Area (hectares) of terrestrial indigenous vegetation protected by fencing	500			500		
Management of significant species or ecological communities						
Number of seedbanks managed	1			1	1	
Weight (kg) of seeds collected	800	500		800	500	

Significant native species

Table 2.6.1 Activities with a major focus on significant native species in Murray

Activities	Activity Expenditure (\$)			
	July 04 - June 05		Total to June 05	
	NAP	Trust	NAP	Trust
Active Management of Significant High Conservation Value Remnant Vegetation Areas for Biodiversity		17,865		81,117
Fish Management, Benchmarking and Monitoring		25,000		25,000
Total		42,865		106,117

Table 2.6.2 Summary of outputs from activities with a major focus on significant native species in Murray

Outputs	July 04 - June 05			Total to July 05		
	NAP	Trust	Joint	NAP	Trust	Joint
Planning						
Property management plans						
Number of property management plans completed		20			25	
On-ground activities						
Riparian and waterway health						
Number of fish barriers addressed		5			5	

Table 2.6.3 Management action targets with a major focus on significant native species in Murray

Management action target
Actively manage for conservation 40% of each broad vegetation type (as mapped in 2001) by 2012
Improve the extent and quality of habitat for fish and aquatic species in the Murray catchment through provision of fish passage by the removal of in stream impediments including redundant weirs and modification of road crossings by 2012
Restore at least 52,500 ha of under-represented (less than 30% remaining) vegetation types by 2012
Retain and manage for conservation existing riparian vegetation. By 2012 restore and actively manage at least 20% of the total unvegetated area (7,00ha combined area in total) of the riparian zone in each management unit
Through community cooperation, participation and agreement, develop and implement an effective means of threat abatement of at least 10 threatened species listed as occurring in the Murray catchment by the year 2012

Table 2.6.4 Resource condition targets with a major focus on significant native species in Murray

Resource condition target
No net loss of all broad vegetation types (as mapped in 2001) and by 2012 restore 52,000 hectares of under-represented broad vegetation types.

Target summary

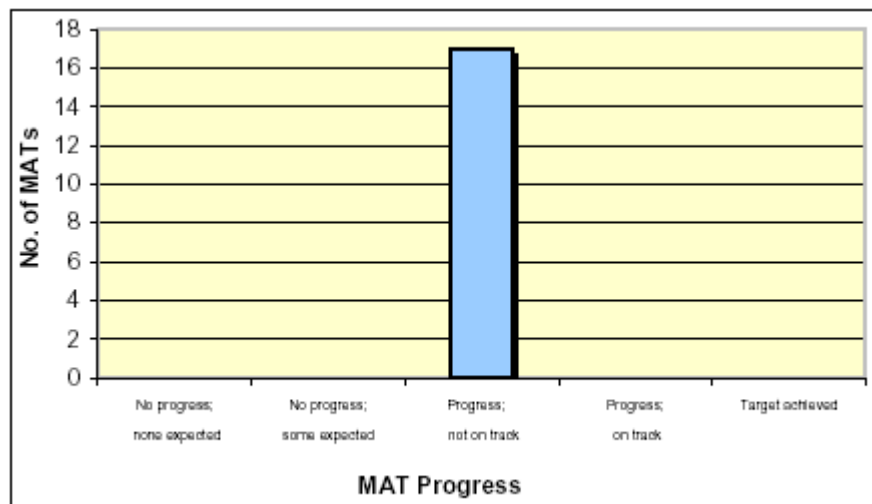
Approved investment strategies detail management action targets (MATs) and resource condition targets (RCTs) targets having a major focus on matters for target, and other supporting activities.

Regions were asked to make an assessment of progress towards the achievement of the targets using the available evidence.

Progress towards achieving each MAT was assessed using the following five-point scale:

- Target achieved or exceeded.
- Progress and on track.
- Progress, but not on track.
- No progress, but some progress was expected.
- No progress, but none expected at this time.

Figure 3.1 Progress towards achieving Management Action Targets in Murray



Progress towards achieving each RCT was assessed using the following five-point scale:

- Evidence of target achieved or exceeded.
- Evidence of progress.
- Evidence of no progress.
- Evidence of regress.
- Insufficient evidence to assess.

Figure 3.2 Progress towards achieving Resource Condition Targets in Murray

