



Regional Summary 4.08
Mackay - Whitsunday Region
Queensland

This Chapter

The first section of the chapter provides an overall summary of investments supported by the NAP and the regional component of the Trust, within the region to 30 June 2005.

The second section summarises the region's investments against the matters for target addressed within the region. This section details the resource condition targets and related management action targets specific to each matter for target addressed through the NAP and the Trust by the region. It also provides a summary of the type of activities supported by these investments and progress in the achievements of these activities to the 30 June 2005.

Sections

1. [Investment summary](#)
2. [Investment summary by matter for target](#)

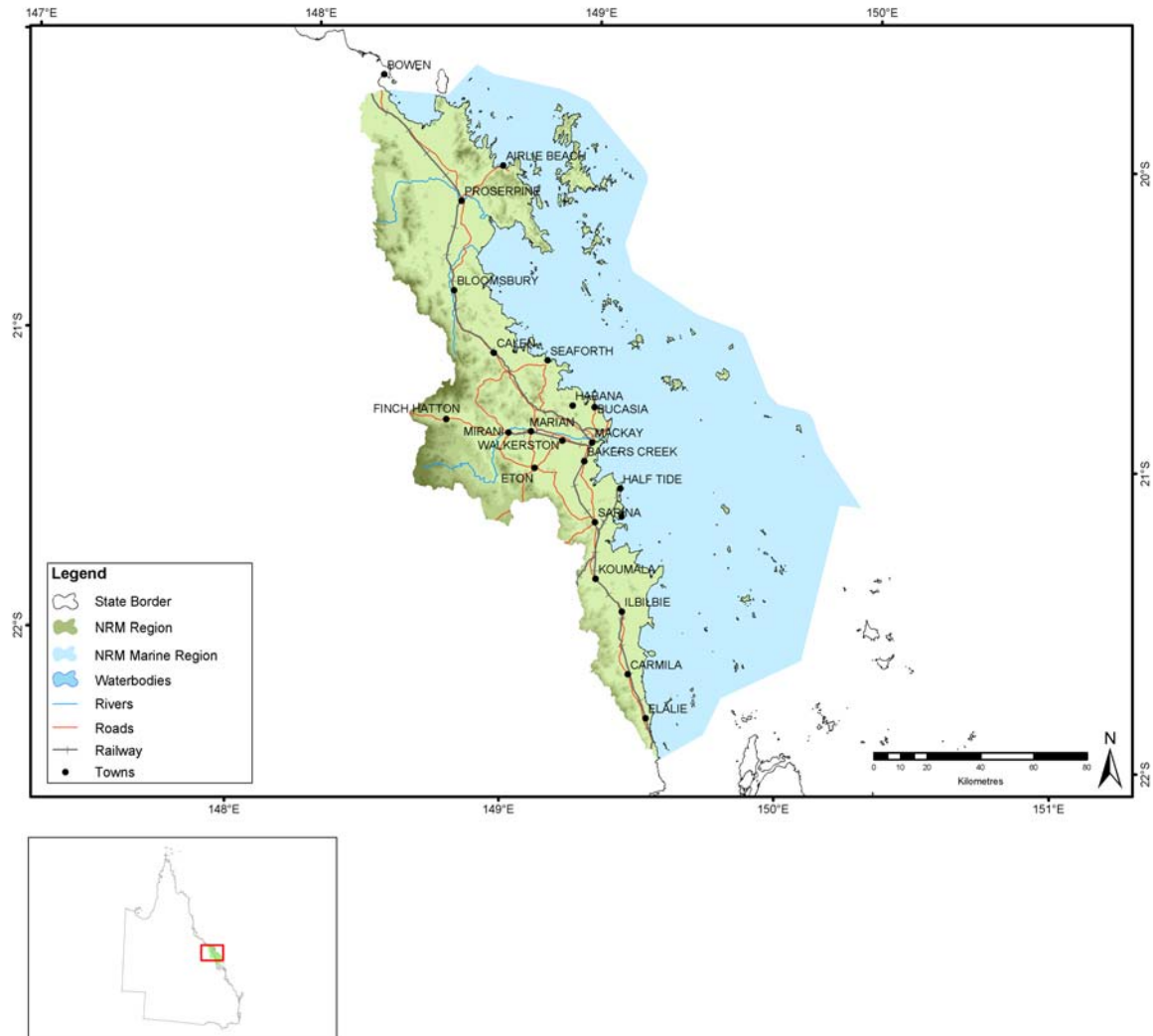
[Native vegetation](#)

[Rivers and wetlands](#)

[Estuarine, coastal and marine](#)

[Significant invasive species](#)

Administrative arrangements



Administrative Body: Mackay Whitsunday Regional Natural Resource Management Group

Trust region: Mackay Whitsunday

NAP region: Not Applicable

Investment summary

This section provides an overall summary of approved investments and expenditure from the various investment streams.

Where applicable, it also details expenditure related to priority funding and regional investments based from accredited regional plans. For these investments, information is provided in relation to the matters for target addressed and the types of activities undertaken. Commencing this year in 2004-05, apart from in Table 1.1, Table 1.2 and Table 1.3, priority action funding and regional investments will be reported together.

Table 1.1 Reported expenditure for approved investments in Mackay - Whitsunday

Funding stream	Activity Expenditure (\$)			
	July 04 - June 05		Total to June 05	
	NAP	Trust	NAP	Trust
Foundation funding		432,688		674,388
Priority action		1,273,750		1,734,575
Total		1,706,438		2,408,962

Table 1.2 Major focus of reported expenditure in Mackay - Whitsunday

Matter for target	Activity Expenditure (\$)			
	July 04 - June 05		Total to June 05	
	NAP	Trust	NAP	Trust
Rivers and Wetlands		170,000		170,000
Native Vegetation		29,136		29,136
Significant Invasive Species		59,240		131,065
Estuarine, Coastal and Marine		283,750		283,750
Other Supporting Activities		1,164,312		1,795,012
Total		1,706,438		2,408,962

Table 1.3 Types of activities in Mackay - Whitsunday

Activity Type	Activity Expenditure (\$)			
	July 04 - June 05		Total to June 05	
	NAP	Trust	NAP	Trust
Resource assessment		59,240		131,065
Planning		810,574		1,052,274
Capacity building		731,624		1,120,624
On-ground activities		105,000		105,000
Total		1,706,438		2,408,962

Investment summary by matter for target

Investments supported by the NAP and the regional component of the Trust, undertaken by the region on a priority basis or through approved regional investment strategies are focussed on the matters for target.

This section provides a summary of the major focus of investments and the reported expenditure related to each of these matters for target. In some cases, investments have had a major focus on more than one matter for target and are not able to be attributed to a particular matter for target. Activities that have been classified as 'other supporting activities', have not been reported in this section.

Each summary for a matter for target describes the expenditure of the activities that contribute to the matter for target. It also provides a description of the outputs achieved through these activities to the 30 June 2005.

Where appropriate to regions with approved investment strategies, each summary also details the management action targets and resource condition targets related to each matter for target addressed through the NAP and the Trust by the region. Where a region has an accredited investment plan and approved investment summary, section three of this Regional Summary summarises the region's assessment of progress towards the achievement of these targets.

Rivers and wetlands

Table 2.1.1 Activities with a major focus on rivers and wetlands in Mackay - Whitsunday

Activities	Activity Expenditure (\$)			
	July 04 - June 05		Total to June 05	
	NAP	Trust	NAP	Trust
Mackay Whitsunday Healthy Waterways		170,000		170,000
Total		170,000		170,000

Table 2.1.2 Summary of outputs from activities with a major focus on rivers and wetlands in Mackay - Whitsunday

Outputs	July 04 - June 05			Total to July 05		
	NAP	Trust	Joint	NAP	Trust	Joint
Resource assessment						
Baseline, trend or condition studies for targets						
Number of sites monitored		46			46	
Number of studies		1			1	
Decision support tools						
Number of models developed		1			1	
Investigations (survey, inventory and mapping and data analysis)						
Area (hectares) surveyed by surface water / inland aquatic studies		1,000			1,000	
Number of surface water / inland aquatic studies		2			2	
Planning						
Improved practice codes or guidelines						
Number of best management practice guidelines developed		1			1	
Capacity building						
Awareness raising activities						
Number of other non-training products or materials developed		1			1	
Quantity distributed		200			200	
Skills and training activities						
Number of participants at workshops in person-days		68			68	
Number of workshops held		6			6	

Native vegetation

Table 2.2.1 Activities with a major focus on native vegetation in Mackay - Whitsunday

Activities	Activity Expenditure (\$)			
	July 04 - June 05		Total to June 05	
	NAP	Trust	NAP	Trust
Sustainable Landscapes Program		29,136		29,136
Total		29,136		29,136

Table 2.2.2 Summary of outputs from activities with a major focus on native vegetation in Mackay - Whitsunday

Outputs	July 04 - June 05			Total to July 05		
	NAP	Trust	Joint	NAP	Trust	Joint
Capacity building						
Skills and training activities						
Number of other skills and training events held		3			3	
Number of participants at other skills and training events in person-days		12			12	

Significant invasive species

Table 2.3.1 Activities with a major focus on significant invasive species in Mackay - Whitsunday

Activities	Activity Expenditure (\$)			
	July 04 - June 05		Total to June 05	
	NAP	Trust	NAP	Trust
Control of Mimosa Pigra		59,240		131,065
Total		59,240		131,064

Table 2.3.2 Summary of outputs from activities with a major focus on significant invasive species in Mackay - Whitsunday

Outputs	July 04 - June 05			Total to July 05		
	NAP	Trust	Joint	NAP	Trust	Joint
Resource assessment						
Baseline, trend or condition studies for targets						
Number of sites monitored					3	
Number of studies					2	
Investigations (survey, inventory and mapping and data analysis)						
Area (hectares) surveyed by species studies					40	
Number of species studies					3	
Research and development studies						
Number of research and development studies undertaken					3	
Capacity building						
Awareness raising activities						
Number of displays developed					5	
Number of media opportunities					23	
Number of other non-training forums					8	
Number of other non-training products or materials developed					18	
Number of participants at other non-training forums in person-days					120	
Quantity distributed					21,250	
Facilitation motivation and support activities						
Number of community groups or community projects assisted					6	
Skills and training activities						
Number of participants at training sessions in person-days					30	
Number of training sessions held					3	
On-ground activities						
Management of significant species or ecological communities						
Area (hectares) protected by fencing specifically for significant species/community protection					60	
Significant pest plant control						
Area (hectares) of pest plant control					120	

Estuarine, coastal and marine

Table 2.4.1 Activities with a major focus on estuarine, coastal and marine in Mackay - Whitsunday

Activities	Activity Expenditure (\$)			
	July 04 - June 05		Total to June 05	
	NAP	Trust	NAP	Trust
Implementation of Sustainable Coastal Ag Systems in GBR		105,000		105,000
Reef Coastal Freshwater Fish Habitat Strategy		178,750		178,750
Total		283,750		283,750

Table 2.4.2 Summary of outputs from activities with a major focus on estuarine, coastal and marine in Mackay - Whitsunday

Outputs	July 04 - June 05			Total to July 05		
	NAP	Trust	Joint	NAP	Trust	Joint
Resource assessment						
Baseline, trend or condition studies for targets						
Number of sites monitored		2			2	
Capacity building						
Awareness raising activities						
Number of demonstrations		2			2	
Number of other non-training forums		4			4	
Number of participants at demonstrations in person-days		24			24	
Number of participants at other non-training forums in person-days		12			12	
Facilitation motivation and support activities						
Number of community groups or community projects assisted		2			2	
Skills and training activities						
Number of participants at training sessions in person-days		12			12	
Number of training sessions held		2			2	