



Regional Summary 2.06
Lower Murray Darling Region
New South Wales

This Chapter

The first section of the chapter provides an overall summary of investments supported by the NAP and the regional component of the Trust, within the region to 30 June 2005.

The second section summarises the region's investments against the matters for target addressed within the region. This section details the resource condition targets and related management action targets specific to each matter for target addressed through the NAP and the Trust by the region. It also provides a summary of the type of activities supported by these investments and progress in the achievements of these activities to the 30 June 2005.

The third section of the chapter provides the region's assessment of their progress in achieving management action targets and resource condition targets to date, and for those targets anticipated to be achieved during 2004-05.

Sections

1. [Investment summary](#)

2. [Investment summary by matter for target](#)

[Land salinity](#)

[Surface water salinity](#)

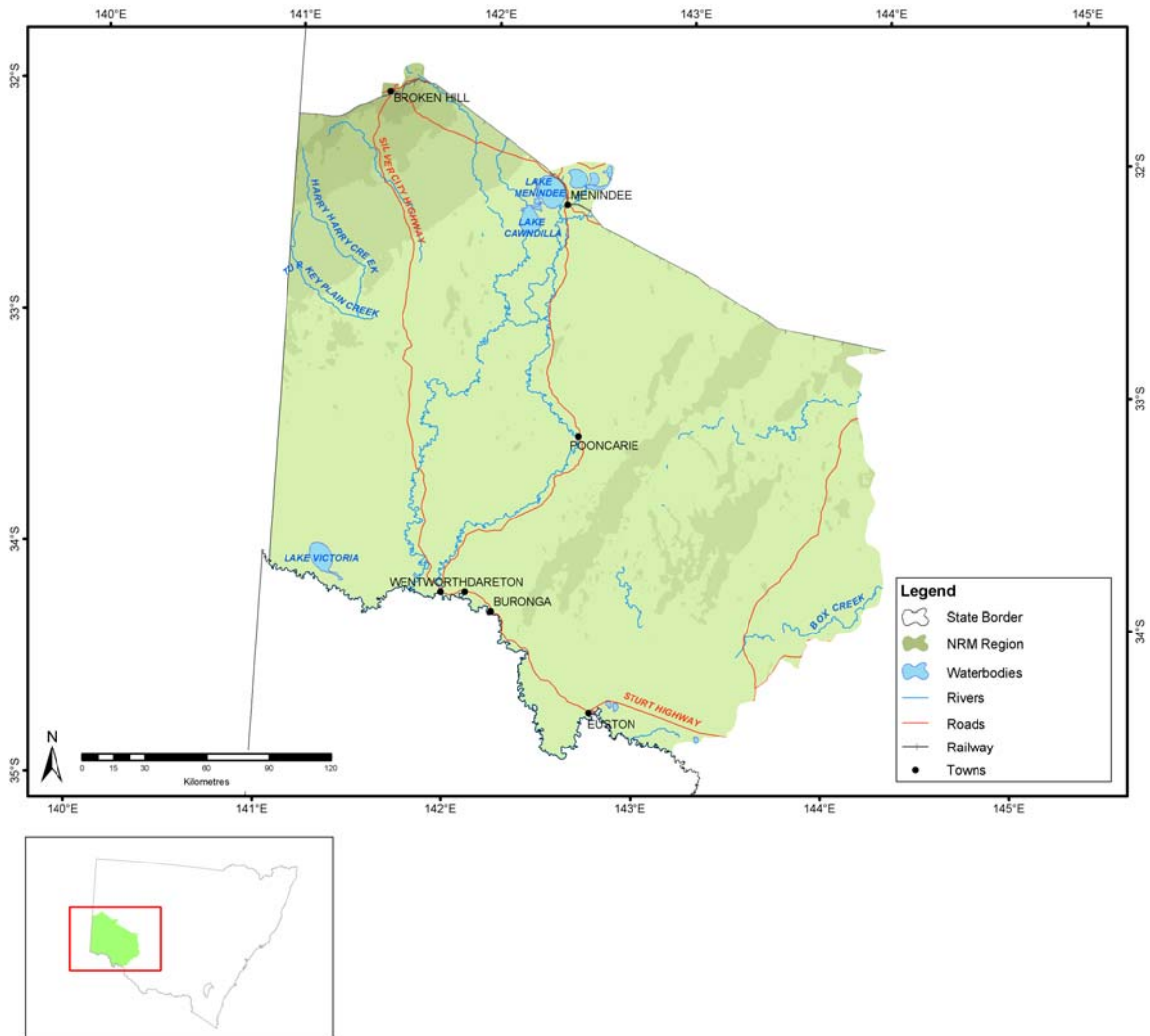
[Soil condition](#)

[Native vegetation](#)

[Rivers and wetlands](#)

3. [Target achievement summary](#)

Administrative arrangements



Administrative Body: Lower Murray Darling Catchment Management Authority

Trust region: Lower Murray Darling

NAP region: Lower Murray Darling

Investment summary

This section provides an overall summary of approved investments and expenditure from the various investment streams.

Where applicable, it also details expenditure related to priority funding and regional investments based from accredited regional plans. For these investments, information is provided in relation to the matters for target addressed and the types of activities undertaken. Commencing this year in 2004-05, apart from in Table 1.1, Table 1.2 and Table 1.3, priority action funding and regional investments will be reported together.

Table 1.1 Reported expenditure for approved investments in Lower Murray Darling

Funding stream	Activity Expenditure (\$)			
	July 04 - June 05		Total to June 05	
	NAP	Trust	NAP	Trust
Priority action	54,147	201,675	424,313	813,616
Regional investment	2,254,895	69,255	2,254,895	69,255
Total	2,309,042	270,930	2,679,208	882,871

Table 1.2 Major focus of reported expenditure in Lower Murray Darling

Matter for target	Activity Expenditure (\$)			
	July 04 - June 05		Total to June 05	
	NAP	Trust	NAP	Trust
Rivers and Wetlands	1,780,444	49,851	2,115,804	437,202
Surface Water Salinity	174,450		209,256	
Native Vegetation		152,026		376,616
Other Supporting Activities	354,148	69,053	354,148	69,053
Total	2,309,042	270,930	2,679,208	882,871

Table 1.3 Types of activities in Lower Murray Darling

Activity Type	Activity Expenditure (\$)			
	July 04 - June 05		Total to June 05	
	NAP	Trust	NAP	Trust
Resource assessment	1,649,494	49,851	1,984,854	437,202
Capacity building	354,148	221,079	354,148	445,669
On-ground activities	305,400		340,206	
Total	2,309,042	270,930	2,679,208	882,871

Investment summary by matter for target

Investments supported by the NAP and the regional component of the Trust, undertaken by the region on a priority basis or through approved regional investment strategies are focussed on the matters for target.

This section provides a summary of the major focus of investments and the reported expenditure related to each of these matters for target. In some cases, investments have had a major focus on more than one matter for target and are not able to be attributed to a particular matter for target. Activities that have been classified as 'other supporting activities', have not been reported in this section.

Each summary for a matter for target describes the expenditure of the activities that contribute to the matter for target. It also provides a description of the outputs achieved through these activities to the 30 June 2005.

Where appropriate to regions with approved investment strategies, each summary also details the management action targets and resource condition targets related to each matter for target addressed through the NAP and the Trust by the region. Where a region has an accredited investment plan and approved investment summary, section three of this Regional Summary summarises the region's assessment of progress towards the achievement of these targets.

Land salinity

6

Table 2.1.1 Management action targets with a major focus on land salinity in Lower Murray Darling

Management action target
Implement effective on-farm irrigation management practices in 90% of farms by the year 2012 to minimise drainage and groundwater accessions
No nett increase in the risk of land and river salinisation due to the effect of dryland cropping, between 2002 and 2012

Soil condition

Table 2.2.1 Management action targets with a major focus on soil condition in Lower Murray Darling

Management action target
Ameliorate soil erosion

Rivers and wetlands

Table 2.3.1 Activities with a major focus on rivers and wetlands in Lower Murray Darling

Activities	Activity Expenditure (\$)			
	July 04 - June 05		Total to June 05	
	NAP	Trust	NAP	Trust
Darling Anabranch Management Plan EIS	1,039,313		1,039,313	
Floodplain Management		202		202
Implementation of the Darling Anabranch management plan	6,306		341,666	
Lower Murray Darling Catchment Aquatic Health Project		49,000		98,000
Menindee Lakes EIS	500,000		500,000	
Menindee Lakes Environmental Impact Statement (EIS) Project		649		339,000
Water Quality and Thegoa Lagoon Management	130,950		130,950	
Wetland Rehabilitation	103,875		103,875	
Total	1,780,444	49,851	2,115,804	437,202

Table 2.3.2 Summary of outputs from activities with a major focus on rivers and wetlands in Lower Murray Darling

Outputs	July 04 - June 05			Total to July 05		
	NAP	Trust	Joint	NAP	Trust	Joint
Resource assessment						
Baseline, trend or condition studies for targets						
Number of sites monitored	18			18		
Number of studies				6	2	
Investigations (survey, inventory and mapping and data analysis)						
Area (hectares) surveyed by other studies	1,660			1,660		
Area (hectares) surveyed by species studies	50			50		
Area (hectares) surveyed by surface water / inland aquatic studies		1.35M			1.35M	
Number of other studies	2			2		
Number of species studies	2			2		
Number of surface water / inland aquatic studies		3			3	
Planning						
Improved practice codes or guidelines						
Number of best management practice guidelines developed				2		
Integrated catchment or sub-catchment plans						
Number of sub-catchment plans developed	1			3	1	
On-ground activities						
Revegetation with indigenous vegetation						
Area (hectares) planted to terrestrial indigenous species	0			0		
Riparian and waterway health						
Length of in-stream habitat established	1			1		
Significant pest plant control						
Area (hectares) of pest plant control	400			400		
Significant pest vertebrate control						
Area (hectares) of pest animal control	400			400		

Table 2.3.3 Management action targets with a major focus on rivers and wetlands in Lower Murray Darling

Management action target
Develop one floodplain management plan for four river management zones of the catchment, and implement actions for one zone by 2012
Manage, modify or remove river and lake regulating structures in order to minimise stratification, improve water quality and facilitate fish passage by 2012
Priority areas for targeted rehabilitation of fish habitats identified and mapped by 2004 and action plans developed and implementation commenced in 40% of priority areas by 2012
Reduce the level of discharge of major urban stormwater and irrigation drainage outfalls that discharge directly to the river, improve the content of discharge through treatment prior to discharge by 2012
Re-instate more natural wetting and drying processes within priority areas of the Lower Murray Darling Catchment including Euston Lakes, parts of the Menindee Lakes System, Thegoa Lagoon and Great Darling Anabranch Wetlands

Table 2.3.4 Resource condition targets with a major focus on rivers and wetlands in Lower Murray Darling

Resource condition target
An identifiable net improvement in riverine health across the LMD catchment by 2012 determined by <ul style="list-style-type: none"> • an improvement in the native to introduced fish ratio (55% improvement in species ratio, 25% improvement in abundance ratio, • measurable improve

Surface water salinity

Table 2.4.1 Activities with a major focus on surface water salinity in Lower Murray Darling

Activities	Activity Expenditure (\$)			
	July 04 - June 05		Total to June 05	
	NAP	Trust	NAP	Trust
Cropping Soils and Recharge Management	34,650		34,650	
Irrigation Best Management Practice (Land and Water Management Plan area)	117,500		117,500	
Irrigation Best Management Practice (NON-Land and Water Management Plan area)	22,300		22,300	
Lower Murray Irrigation Areas Land and Water Management Plan - Further Implementation			34,806	
Total	174,450		209,256	

Table 2.4.2 Summary of outputs from activities with a major focus on surface water salinity in Lower Murray Darling

Outputs	July 04 - June 05			Total to July 05		
	NAP	Trust	Joint	NAP	Trust	Joint
Resource assessment						
Baseline, trend or condition studies for targets						
Number of sites monitored			8			8
Number of studies			13			13
Decision support tools						
Number of models developed			1			1
Capacity building						
Facilitation motivation and support activities						
Number of FTE active community support positions (facilitators or coordinators)			1			1
Skills and training activities						
Number of other skills and training events held						19
Number of participants at training sessions in person-days	21			140		
Number of training sessions held	21			29		
On-ground activities						
Water use efficiency						
Area (hectares) of land using improved irrigation practices	25			25		
Number of land managers using improved irrigation practices	25			45		

Table 2.4.3 Resource condition targets with a major focus on surface water salinity in Lower Murray Darling

Resource condition target
To maintain the year 2000, 95th percentile, salt concentration of 463 EC at Lock 6

Native vegetation

Table 2.5.1 Activities with a major focus on native vegetation in Lower Murray Darling

Activities	Activity Expenditure (\$)			
	July 04 - June 05		Total to June 05	
	NAP	Trust	NAP	Trust
Lower Murray Darling Catchment Rangeland Management Project		152,026		376,616
Total		152,026		376,616

Table 2.5.2 Summary of outputs from activities with a major focus on native vegetation in Lower Murray Darling

Outputs	July 04 - June 05			Total to July 05		
	NAP	Trust	Joint	NAP	Trust	Joint
Resource assessment						
Baseline, trend or condition studies for targets						
Number of studies		1			1	
Decision support tools						
Number of other decision support tools developed					1	
Investigations (survey, inventory and mapping and data analysis)						
Area (hectares) surveyed by other studies		6.33M			6.33M	
Area (hectares) surveyed by species studies		182,000			2.12M	
Number of other studies		2			3	
Number of species studies		1			3	
Planning						
Improved practice codes or guidelines						
Number of best management practice codes developed		1			1	
Number of best management practice guidelines developed		2			2	
Capacity building						
Skills and training activities						
Number of participants at training sessions in person-days		12			12	
Number of participants at workshops in person-days		140			140	
Number of training sessions held		1			1	
Number of workshops held		2			2	
On-ground activities						
Conservation by agreements						
Area (hectares) of voluntary conservation agreements covered		1,920			8,810	
Number of voluntary conservation agreements		3			6	
Management of significant species or ecological communities						
Area (hectares) protected by fencing specifically for significant species/community protection					2	

Table 2.5.3 Management action targets with a major focus on native vegetation in Lower Murray Darling

Management action target
Improve the condition of each vegetation community at 90% of sites by the year 2007 as measured by the key indicators
Increase by 171,000 hectares, the area of permanent conservation reserves in the catchment by 2012, as a contribution towards achieving the permanent conservation of 20% of each vegetation community (pre-clearing extent) by 2052

Table 2.5.4 Resource condition targets with a major focus on native vegetation in Lower Murray Darling

Resource condition target
A measurable improvement in the condition of native vegetation communities by 2007, as measured by key indicators at 90% of sites in the catchment, with retention of at least 80% of the pre-clearing extent of each native vegetation community

Target summary

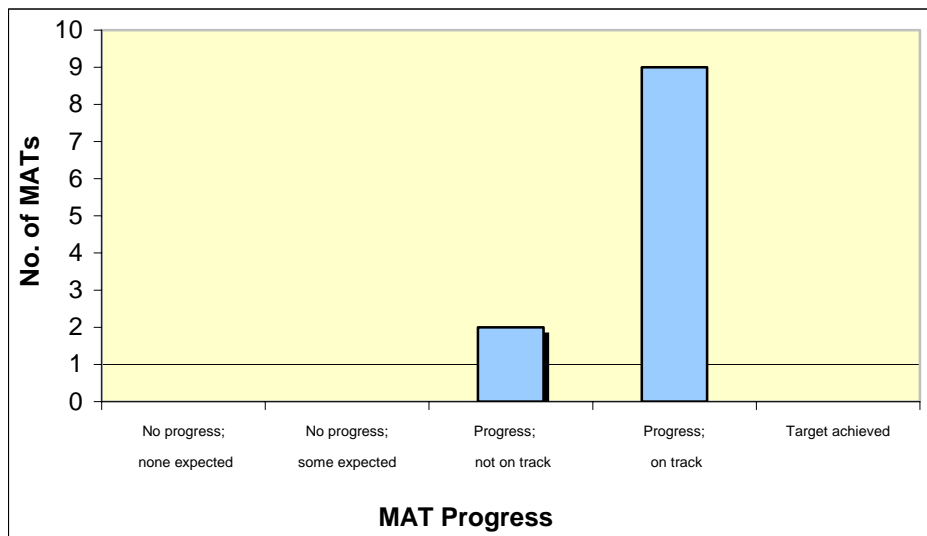
Approved investment strategies detail management action targets (MATs) and resource condition targets (RCTs) targets having a major focus on matters for target, and other supporting activities.

Regions were asked to make an assessment of progress towards the achievement of the targets using the available evidence.

Progress towards achieving each MAT was assessed using the following five-point scale:

- Target achieved or exceeded.
- Progress and on track.
- Progress, but not on track.
- No progress, but some progress was expected.
- No progress, but none expected at this time.

Figure 3.1 Progress towards achieving Management Action Targets in Lower Murray Darling



Progress towards achieving each RCT was assessed using the following five-point scale:

- Evidence of target achieved or exceeded.
- Evidence of progress.
- Evidence of no progress.
- Evidence of regress.
- Insufficient evidence to assess.

Figure 3.2 Progress towards achieving Resource Condition Targets in Lower Murray Darling

