



## Regional Summary 4.07

Fitzroy Region

Queensland

## This Chapter

The first section of the chapter provides an overall summary of investments supported by the NAP and the regional component of the Trust, within the region to 30 June 2005.

The second section summarises the region's investments against the matters for target addressed within the region. This section details the resource condition targets and related management action targets specific to each matter for target addressed through the NAP and the Trust by the region. It also provides a summary of the type of activities supported by these investments and progress in the achievements of these activities to the 30 June 2005.

The third section of the chapter provides the region's assessment of their progress in achieving management action targets and resource condition targets to date, and for those targets anticipated to be achieved during 2004-05.

### Sections

1. [Investment summary](#)

2. [Investment summary by matter for target](#)

[Land salinity](#)

[Surface water salinity](#)

[Soil condition](#)

[Native vegetation](#)

[Rivers and wetlands](#)

[Significant native species](#)

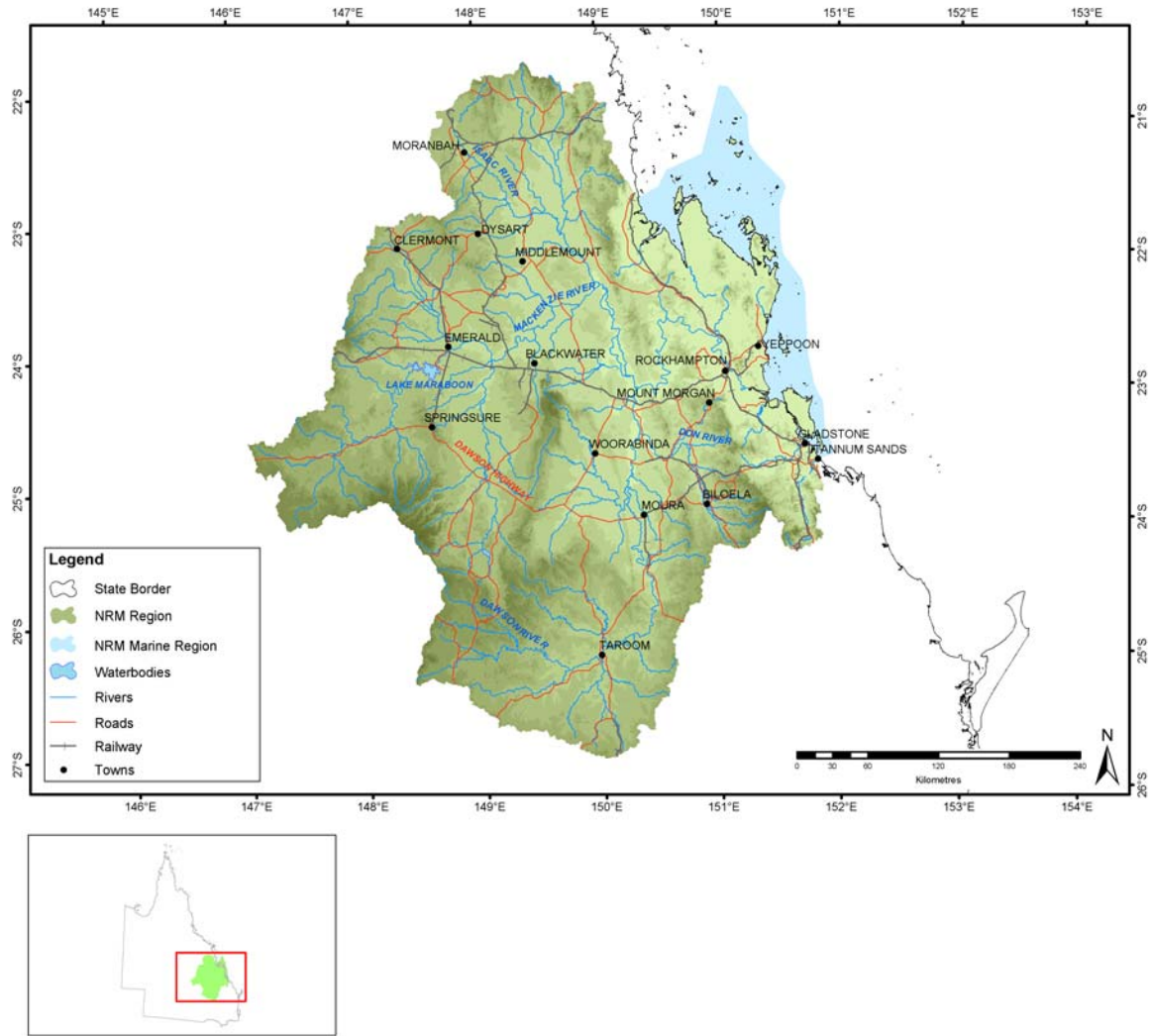
[Significant invasive species](#)

[Turbidity in aquatic environments](#)

[Estuarine, coastal and marine](#)

3. [Target achievement summary](#)

# Administrative arrangements



Administrative Body: Fitzroy Basin Association Incorporated

Trust region: Fitzroy

NAP region: Fitzroy

## Investment summary

This section provides an overall summary of approved investments and expenditure from the various investment streams.

Where applicable, it also details expenditure related to priority funding and regional investments based from accredited regional plans. For these investments, information is provided in relation to the matters for target addressed and the types of activities undertaken. Commencing this year in 2004-05, apart from in Table 1.1, Table 1.2 and Table 1.3, priority action funding and regional investments will be reported together.

**Table 1.1 Reported expenditure for approved investments in Fitzroy**

Funding stream	Activity Expenditure (\$)			
	July 04 - June 05		Total to June 05	
	NAP	Trust	NAP	Trust
Foundation funding	416,655	416,656	1,212,656	433,656
Priority action	2,751,969	496,145	3,394,253	769,965
Regional investment	1,423,099	705,852	1,423,099	705,852
Regional competitive		108,815		108,815
<b>Total</b>	<b>4,591,723</b>	<b>1,727,468</b>	<b>6,030,008</b>	<b>2,018,288</b>

**Table 1.2 Major focus of reported expenditure in Fitzroy**

Matter for target	Activity Expenditure (\$)			
	July 04 - June 05		Total to June 05	
	NAP	Trust	NAP	Trust
Land Salinity	49,354		49,354	
Soil Condition		108,815		108,815
Rivers and Wetlands	2,617,655	53,844	3,117,895	53,844
Native Vegetation	650,294	407,054	650,294	407,054
Significant Native Species	235,817	92,926	235,817	92,926
Estuarine, Coastal and Marine		155,023		155,023
Other Supporting Activities	1,038,603	909,806	1,976,648	1,200,626
<b>Total</b>	<b>4,591,723</b>	<b>1,727,468</b>	<b>6,030,008</b>	<b>2,018,288</b>

**Table 1.3 Types of activities in Fitzroy**

Activity Type	Activity Expenditure (\$)			
	July 04 - June 05		Total to June 05	
	NAP	Trust	NAP	Trust
Resource assessment	618,289	108,815	1,118,529	108,815
Planning	416,655	487,080	1,212,656	504,080
Capacity building	420,314	422,726	562,358	696,546
On-ground activities	3,136,465	708,847	3,136,465	708,847
<b>Total</b>	<b>4,591,723</b>	<b>1,727,468</b>	<b>6,030,008</b>	<b>2,018,288</b>

## Investment summary by matter for target

Investments supported by the NAP and the regional component of the Trust, undertaken by the region on a priority basis or through approved regional investment strategies are focussed on the matters for target.

This section provides a summary of the major focus of investments and the reported expenditure related to each of these matters for target. In some cases, investments have had a major focus on more than one matter for target and are not able to be attributed to a particular matter for target. Activities that have been classified as 'other supporting activities', have not been reported in this section.

Each summary for a matter for target describes the expenditure of the activities that contribute to the matter for target. It also provides a description of the outputs achieved through these activities to the 30 June 2005.

Where appropriate to regions with approved investment strategies, each summary also details the management action targets and resource condition targets related to each matter for target addressed through the NAP and the Trust by the region. Where a region has an accredited investment plan and approved investment summary, section three of this Regional Summary summarises the region's assessment of progress towards the achievement of these targets.

## Land salinity

**Table 2.1.1 Activities with a major focus on land salinity in Fitzroy**

Activities	Activity Expenditure (\$)			
	July 04 - June 05		Total to June 05	
	NAP	Trust	NAP	Trust
Salinity Program	49,354		49,354	
<b>Total</b>	<b>49,354</b>		<b>49,354</b>	

**Table 2.1.2 Management action targets with a major focus on land salinity in Fitzroy**

Management action target
Code of for native and plantation forests for all land tenures implemented within 10 years
Code of practice for native and plantation forests for all land tenures developed within 2 years
Implement management practices that seek to achieve natural water balance on 50% of recharge areas to high salinity risk landscapes to prevent salinity occurrence increase in unaffected areas within 5 years
Set quantifiable soil salinity targets within 5 years, once salinity risk is known

**Table 2.1.3 Resource condition targets with a major focus on land salinity in Fitzroy**

Resource condition target
Maintain and restore deep drainage to natural levels in recharge areas of high salinity risk or current outbreak within 10 years

## Soil condition

**Table 2.2.1 Resource condition targets with a major focus on soil condition in Fitzroy**

Resource condition target
Functionality of 20% of area affected by seawalls and ponded pastures restored within 15 years
Minimise disturbance / drainage of land and natural groundwater levels on all acid sulphate soils within 10 years and ongoing
Reduce off-site and on-site impacts of mining operations within 10 years

## Rivers and wetlands

Table 2.3.1 Activities with a major focus on rivers and wetlands in Fitzroy

Activities	Activity Expenditure (\$)			
	July 04 - June 05		Total to June 05	
	NAP	Trust	NAP	Trust
Healthy Waterways, Rivers and Wetlands Program	217,780	53,844	217,780	53,844
Implementing the Central Queensland Strategy for Sustainability - Fitzroy Basin Neighbourhood Catchment Programme	416,655		916,895	
Water Allocation and Management Program	68,220		68,220	
Water treatment plant for Mt Morgan mine	1,915,000		1,915,000	
<b>Total</b>	<b>2,617,655</b>	<b>53,844</b>	<b>3,117,895</b>	<b>53,844</b>

Table 2.3.2 Summary of outputs from activities with a major focus on rivers and wetlands in Fitzroy

Outputs	July 04 - June 05			Total to July 05		
	NAP	Trust	Joint	NAP	Trust	Joint
<b>Resource assessment</b>						
Baseline, trend or condition studies for targets						
Number of sites monitored	75			150		
Decision support tools						
Number of information management systems developed	1			2		
Investigations (survey, inventory and mapping and data analysis)						
Number of other studies	1			1		
<b>Planning</b>						
Property management plans						
Number of property management plans completed	75			150		
<b>Capacity building</b>						
Awareness raising activities						
Number of field days	2			2		
Number of other non-training forums	3			3		
Number of other non-training products or materials developed	1			2		
Number of participants at field days in person-days	50			50		
Number of participants at other non-training forums in person-days	40			40		
Number of websites developed	1			2		
Quantity distributed	90			180		
Facilitation motivation and support activities						
Number of FTE active community support positions (facilitators or coordinators)	5			10		
Skills and training activities						
Number of participants at workshops in person-days	160			320		
Number of workshops held	2			4		
<b>On-ground activities</b>						
Indigenous vegetation protected by fencing						
Area (hectares) of riparian indigenous vegetation protected by fencing	3,000			6,000		
Streambank length (km) of riparian indigenous vegetation protected by fencing	80			160		
Indigenous vegetation enhanced/rehabilitated						

Outputs	July 04 - June 05			Total to July 05		
	NAP	Trust	Joint	NAP	Trust	Joint
Area (hectares) of riparian indigenous vegetation enhanced/rehabilitated	2,000			4,000		
Streambank length (km) of riparian indigenous vegetation enhanced/rehabilitated	80			160		

**Table 2.3.3 Management action targets with a major focus on rivers and wetlands in Fitzroy**

Management action target
Implement healthy waterways program to protect and improve 1500km of riparian area, 2000ha of wetland, and overcome 2 barriers to migration

**Table 2.3.4 Resource condition targets with a major focus on rivers and wetlands in Fitzroy**

Resource condition target
A measurable improvement in water quality at reference sites to be determined, or measured by other means, within 15 years
Achieve environmental flow objectives for the region as indicated in the Fitzroy and Boyne Water Resource Plans ongoing, post completion
Achieve WRP Water Allocation Security Objectives post completion of ROP's and ongoing
Highest efficiency use of water use by all users including urban, industrial, and agricultural within 10 years
Length of functional riparian areas increased by 20% within 10 years (and 50% in 20 years in FRCC sub-region)]
No net decrease in water quality as a result of mining activity ongoing
Significant wetlands (including their riparian zones) protected, restored, and under appropriate management within 10 years and ongoing

## Turbidity in aquatic environments

**Table 2.4.1 Management action targets with a major focus on turbidity in aquatic environments in Fitzroy**

Management action target
Adoption of management systems that increase ground cover (i.e. rotational grazing, CTF) by an additional 500 landholders within 5 years
Collect event based water quality data for a representative range of soil types, hill-slopes and management practices by June 2005 and ongoing
Engage communities in high risk catchments in monitoring and action for improvements in water quality (in conjunction with A109) within 6 months of funding
Identify and establish strategic sites, including in high risk catchments, for event based water quality monitoring within 6 months of funding
Improve understanding of processing capacity of estuary, bay and floodplain, within 12 months of funding, in order to set end of valley water quality targets
Targets developed and refined for ground cover on different soil types, slopes, average rainfall areas and land uses within 5 years

## Surface water salinity

**Table 2.5.1 Resource condition targets with a major focus on surface water salinity in Fitzroy**

Resource condition target
Maintain EC levels consistent with ANZECC guidelines until defined salinity targets are set

## Native vegetation

**Table 2.6.1 Activities with a major focus on native vegetation in Fitzroy**

Activities	Activity Expenditure (\$)			
	July 04 - June 05		Total to June 05	
	NAP	Trust	NAP	Trust
Biodiversity and Vegetation Program		132,390		132,390
Protecting our Heritage Program		50,271		50,271
Sustainable Landscapes Program	650,294	224,393	650,294	224,393
<b>Total</b>	<b>650,294</b>	<b>407,054</b>	<b>650,294</b>	<b>407,054</b>

**Table 2.6.2 Management action targets with a major focus on native vegetation in Fitzroy**

Management action target
10% increase in ability to identify, prevent, treat and manage existing weeds and pest animals in land and aquatic environments within 3 years and ongoing (particularly land managers new to an area)
150 000 ha of private land supporting remnant vegetation voluntarily protected and managed primarily for conservation within 10 years
150 000ha of private land managed primarily for conservation and under voluntary agreements with the state within 10 years
50% increase in ability to identify, prevent, treat and manage new weeds and pest animals in land and aquatic environments within 3 years and ongoing
Full implementation of EMOS and Environmental Authority conditions for whole of mine life (ongoing) including cultural heritage management, biodiversity, landform stability and cover retention now and ongoing
Implement draft RVMPs, and full implementation of Vegetation Management Act 2004 ongoing
Pest management plans developed and utilised by all local governments within time frames required by the Land Protection (Pest and Stock Route Management) Act 2002

**Table 2.6.3 Resource condition targets with a major focus on native vegetation in Fitzroy**

Resource condition target
150 000ha of private land managed primarily for conservation and under voluntary agreements with the state within 10 years
90% (aggregate) of 'endangered' regional ecosystems not protected under Vegetation Management Act 2004 are protected from habitat loss, and where this is not possible, full re-establishment of original vegetation following development, within 5 year
Additional 150 000ha of private land supporting regionally significant remnant vegetation voluntarily managed primarily for conservation within 10 years
Additional 5000ha of non-remnant native vegetation regenerated on private lands in areas forming wildlife corridors and linkages, particularly in riparian areas within 10 years
Minimum 40% of original extent of native remnant vegetation coverage in patches of 500ha or greater within 10 years
Productivity and ecological condition of the production forest estate increased by an amount to be determined by A169 within 15 years
Retain a minimum of 30% cover on 95% of all land in the region within 15 years (minimum 30% cover on 50% of all land within 5 years, 75% of all land within 10years, and 95% of all land within 15 years)

## Significant native species

**Table 2.7.1 Activities with a major focus on significant native species in Fitzroy**

Activities	Activity Expenditure (\$)			
	July 04 - June 05		Total to June 05	
	NAP	Trust	NAP	Trust
Healthy Region Program	235,817	89,931	235,817	89,931
Management of significant areas for biodiversity conservation within exploration and coal mining lease areas in the brigalow belt north bioregion		2,995		2,995
<b>Total</b>	<b>235,817</b>	<b>92,926</b>	<b>235,817</b>	<b>92,926</b>

**Table 2.7.2 Management action targets with a major focus on significant native species in Fitzroy**

Management action target
5000ha of non-remnant native vegetation regenerated on private lands in areas forming wildlife corridors and linkages, particularly in riparian areas within 10 years
Protection, maintenance and enhancement of the habitat and populations of regional species and their distribution within 10 years
Review recovery plans for rare, vulnerable and endangered species and communities to identify common priority actions by March 2005, to support their implementation.

**Table 2.7.3 Resource condition targets with a major focus on significant native species in Fitzroy**

Resource condition target
10% improvement in diversity and population of aquatic species, by overcoming in-stream barriers on significant streams and rivers within 10 years
80% of regional ecosystems protected on state land primarily managed for conservation (National Parks and other reserves) within 10 years
All significant habitats of migratory and breeding water birds, and drought refuges, are protected from incompatible activities, and population sizes are maintained within acceptable limits ongoing
All significant turtle nesting beaches (Peak Island, Curtis Island, Facing Island and Alligator Bay) used annually by >1% of the Queensland breeding population are protected from incompatible activities ongoing
Habitat variability and condition of reaches with high ecological value maintained in each catchment ongoing
No further loss of biodiversity at a species, subspecies or major geographic population level scale in the region (list of priority terrestrial species of conservation concern and all aquatic species listed as rare, vulnerable or endangered) ongoing
Populations of commercial and recreationally important fish and crustaceans maintained ongoing

## Significant invasive species

**Table 2.8.1 Resource condition targets with a major focus on significant invasive species in Fitzroy**

Resource condition target
100% control of outbreaks of new agricultural and environmental (Class 2 & 3) pest plants and animals, including pests of aquatic environmental significance ongoing
Impact of agricultural and environmental pest plants and animals (class 2 & 3) is contained within five years and trend reversed within ten years

## Estuarine, coastal and marine

**Table 2.9.1 Activities with a major focus on estuarine, coastal and marine in Fitzroy**

Activities	Activity Expenditure (\$)			
	July 04 - June 05		Total to June 05	
	NAP	Trust	NAP	Trust
Coral and Coastal Program		155,023		155,023
<b>Total</b>		<b>155,023</b>		<b>155,023</b>

**Table 2.9.2 Management action targets with a major focus on estuarine, coastal and marine in Fitzroy**

Management action target
Development and implementation of Capricorn Coast Regional Coastal Management Plan within 5 years
Implementation of State and Curtis Coast Regional Coastal Management Plan ongoing
Refine the CQSS2 to fully incorporate coastal and marine issues by March 2005
State Planning Policy 2/02 implemented through local govt planning schemes under IPA and through environmental impact assessment processes under other legislation within 1 year and ongoing
Wetland, estuary and in-shore reef protection program covering 10% extent within 3 years, and 15% within 5 years, and ongoing

**Table 2.9.3 Resource condition targets with a major focus on estuarine, coastal and marine in Fitzroy**

Resource condition target
Structure and function of remnant intertidal wetlands, estuaries, and in-shore reefs is maintained and re-established within 15 years

## Target summary

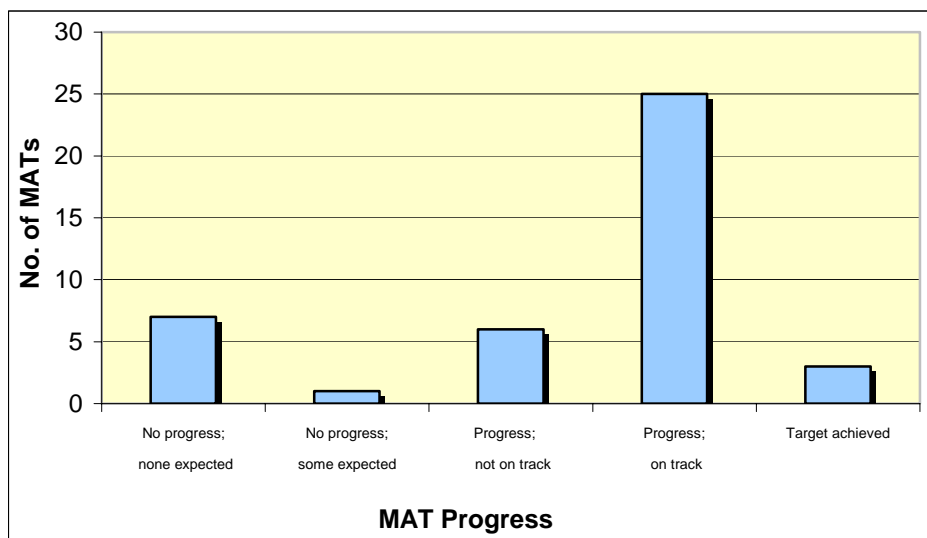
Approved investment strategies detail management action targets (MATs) and resource condition targets (RCTs) targets having a major focus on matters for target, and other supporting activities.

Regions were asked to make an assessment of progress towards the achievement of the targets using the available evidence.

Progress towards achieving each MAT was assessed using the following five-point scale:

- Target achieved or exceeded.
- Progress and on track.
- Progress, but not on track.
- No progress, but some progress was expected.
- No progress, but none expected at this time.

**Figure 3.1 Progress towards achieving Management Action Targets in Fitzroy**



Progress towards achieving each RCT was assessed using the following five-point scale:

- Evidence of target achieved or exceeded.
- Evidence of progress.
- Evidence of no progress.
- Evidence of regress.
- Insufficient evidence to assess.

**Figure 3.2 Progress towards achieving Resource Condition Targets in Fitzroy**

