



Regional Summary 4.06
Desert Channels Region
Queensland

This Chapter

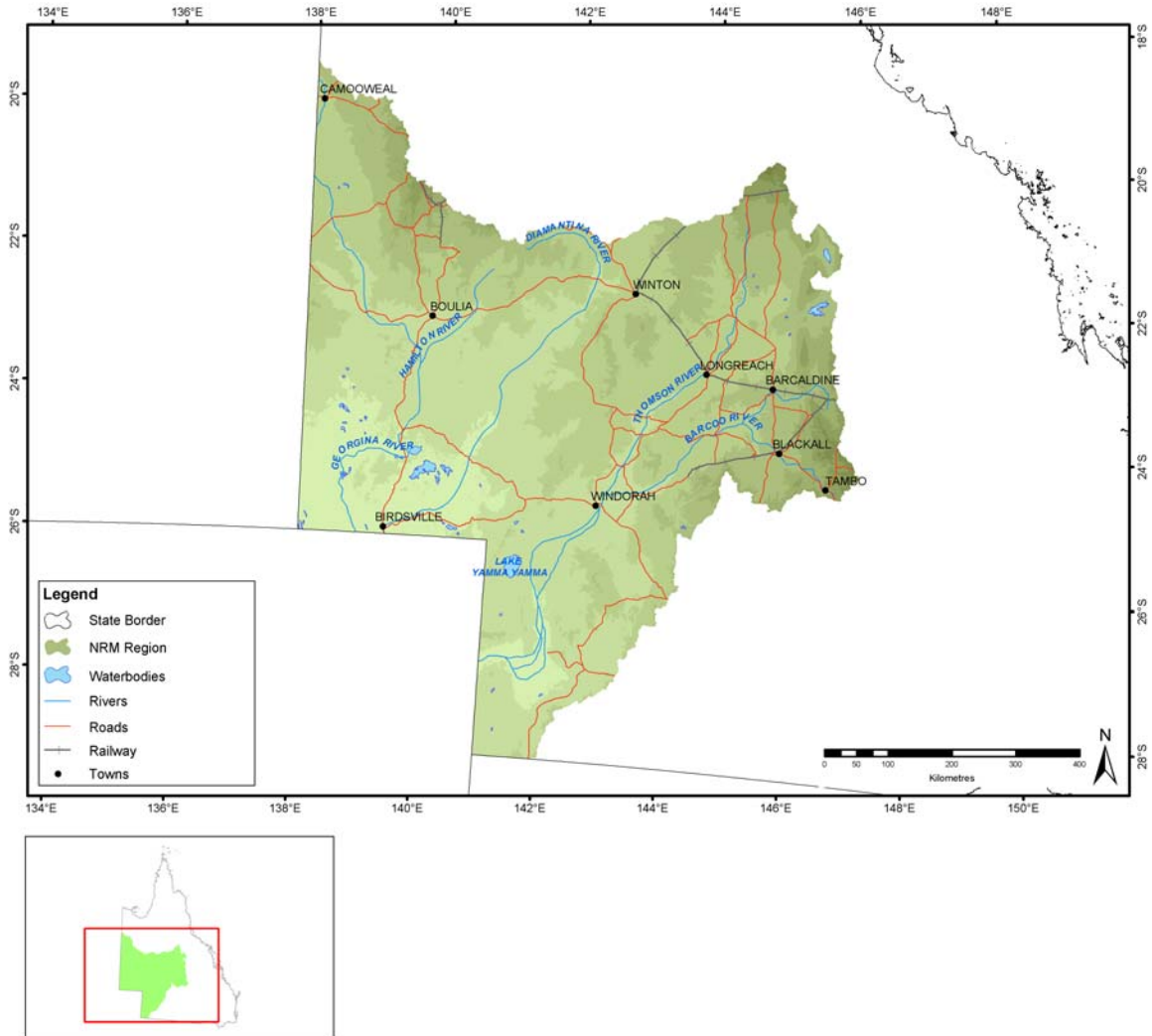
The first section of the chapter provides an overall summary of investments supported by the NAP and the regional component of the Trust, within the region to 30 June 2005.

The second section summarises the region's investments against the matters for target addressed within the region. This section details the resource condition targets and related management action targets specific to each matter for target addressed through the NAP and the Trust by the region. It also provides a summary of the type of activities supported by these investments and progress in the achievements of these activities to the 30 June 2005.

Sections

1. [Investment summary](#)
2. [Investment summary by matter for target](#)
 - [Soil condition](#)
 - [Rivers and wetlands](#)
 - [Significant invasive species](#)
 - [Significant native species](#)

Administrative arrangements



Administrative Body: Desert Channels Queensland Incorporated

Trust region: Desert Channels

NAP region: Not Applicable

Investment summary

This section provides an overall summary of approved investments and expenditure from the various investment streams.

Where applicable, it also details expenditure related to priority funding and regional investments based from accredited regional plans. For these investments, information is provided in relation to the matters for target addressed and the types of activities undertaken. Commencing this year in 2004-05, apart from in Table 1.1, Table 1.2 and Table 1.3, priority action funding and regional investments will be reported together.

Table 1.1 Reported expenditure for approved investments in Desert Channels

Funding stream	Activity Expenditure (\$)			
	July 04 - June 05		Total to June 05	
	NAP	Trust	NAP	Trust
Foundation funding		172,012		291,869
Priority action		959,901		1,199,473
Regional investment		444,671		444,671
Regional competitive		294,000		294,000
Total		1,870,584		2,230,013

Table 1.2 Major focus of reported expenditure in Desert Channels

Matter for target	Activity Expenditure (\$)			
	July 04 - June 05		Total to June 05	
	NAP	Trust	NAP	Trust
Soil Condition		291,566		291,566
Rivers and Wetlands		39,687		39,687
Native Vegetation		294,000		294,000
Significant Native Species		29,169		29,169
Significant Invasive Species		79,170		79,170
Other Supporting Activities		1,136,992		1,496,421
Total		1,870,584		2,230,013

Table 1.3 Types of activities in Desert Channels

Activity Type	Activity Expenditure (\$)			
	July 04 - June 05		Total to June 05	
	NAP	Trust	NAP	Trust
Resource assessment		116,939		116,939
Planning		172,012		291,869
Capacity building		835,060		1,074,632
On-ground activities		746,573		746,573
Total		1,870,584		2,230,013

Investment summary by matter for target

Investments supported by the NAP and the regional component of the Trust, undertaken by the region on a priority basis or through approved regional investment strategies are focussed on the matters for target.

This section provides a summary of the major focus of investments and the reported expenditure related to each of these matters for target. In some cases, investments have had a major focus on more than one matter for target and are not able to be attributed to a particular matter for target. Activities that have been classified as 'other supporting activities', have not been reported in this section.

Each summary for a matter for target describes the expenditure of the activities that contribute to the matter for target. It also provides a description of the outputs achieved through these activities to the 30 June 2005.

Where appropriate to regions with approved investment strategies, each summary also details the management action targets and resource condition targets related to each matter for target addressed through the NAP and the Trust by the region. Where a region has an accredited investment plan and approved investment summary, section three of this Regional Summary summarises the region's assessment of progress towards the achievement of these targets.

Soil condition

Table 2.1.1 Activities with a major focus on soil condition in Desert Channels

Activities	Activity Expenditure (\$)			
	July 04 - June 05		Total to June 05	
	NAP	Trust	NAP	Trust
Land		70,365		70,365
Sustainable management and Conservation of Grazing Lands in Queensland's Rangelands		221,201		221,201
Total		291,566		291,566

Table 2.1.2 Summary of outputs from activities with a major focus on soil condition in Desert Channels

Outputs	July 04 - June 05			Total to July 05		
	NAP	Trust	Joint	NAP	Trust	Joint
Resource assessment						
Decision support tools						
Number of other decision support tools developed		7			7	
Capacity building						
Awareness raising activities						
Number of other non-training products or materials developed		1			1	
Quantity distributed		30			30	
Skills and training activities						
Number of other key materials developed		1			1	
Number of other skills and training events held		1			1	
Number of participants at other skills and training events in person-days		20			20	

Rivers and wetlands

Table 2.2.1 Activities with a major focus on rivers and wetlands in Desert Channels

Activities	Activity Expenditure (\$)			
	July 04 - June 05		Total to June 05	
	NAP	Trust	NAP	Trust
Water		39,687		39,687
Total		39,687		39,687

Significant native species

Table 2.3.1 Activities with a major focus on significant native species in Desert Channels

Activities	Activity Expenditure (\$)			
	July 04 - June 05		Total to June 05	
	NAP	Trust	NAP	Trust
Biodiversity		29,169		29,169
Total		29,169		29,169

Significant invasive species

Table 2.4.1 Activities with a major focus on significant invasive species in Desert Channels

Activities	Activity Expenditure (\$)			
	July 04 - June 05		Total to June 05	
	NAP	Trust	NAP	Trust
Cross Catchments Weeds and Feral animal initiative (Bushcare)		79,170		79,170
Total		79,170		79,170

Table 2.4.2 Summary of outputs from activities with a major focus on significant invasive species in Desert Channels

Outputs	July 04 - June 05			Total to July 05		
	NAP	Trust	Joint	NAP	Trust	Joint
Capacity building						
Awareness raising activities						
Number of field days		5			5	
Number of participants at field days in person-days		150			150	
Facilitation motivation and support activities						
Number of community groups or community projects assisted		10			10	
Number of FTE active community support positions (facilitators or coordinators)		1			1	
Skills and training activities						
Number of other key materials developed		2			2	
Quantity of other key materials distributed		15			15	