



Regional Summary 4.05

Condamine Region

Queensland

## This Chapter

The first section of the chapter provides an overall summary of investments supported by the NAP and the regional component of the Trust, within the region to 30 June 2005.

The second section summarises the region's investments against the matters for target addressed within the region. This section details the resource condition targets and related management action targets specific to each matter for target addressed through the NAP and the Trust by the region. It also provides a summary of the type of activities supported by these investments and progress in the achievements of these activities to the 30 June 2005.

The third section of the chapter provides the region's assessment of their progress in achieving management action targets and resource condition targets that were active during 2004-05.

### Sections

1. [Investment summary](#)

2. [Investment summary by matter for target](#)

[Land salinity](#)

[Surface water salinity](#)

[Soil condition](#)

[Native vegetation](#)

[Rivers and wetlands](#)

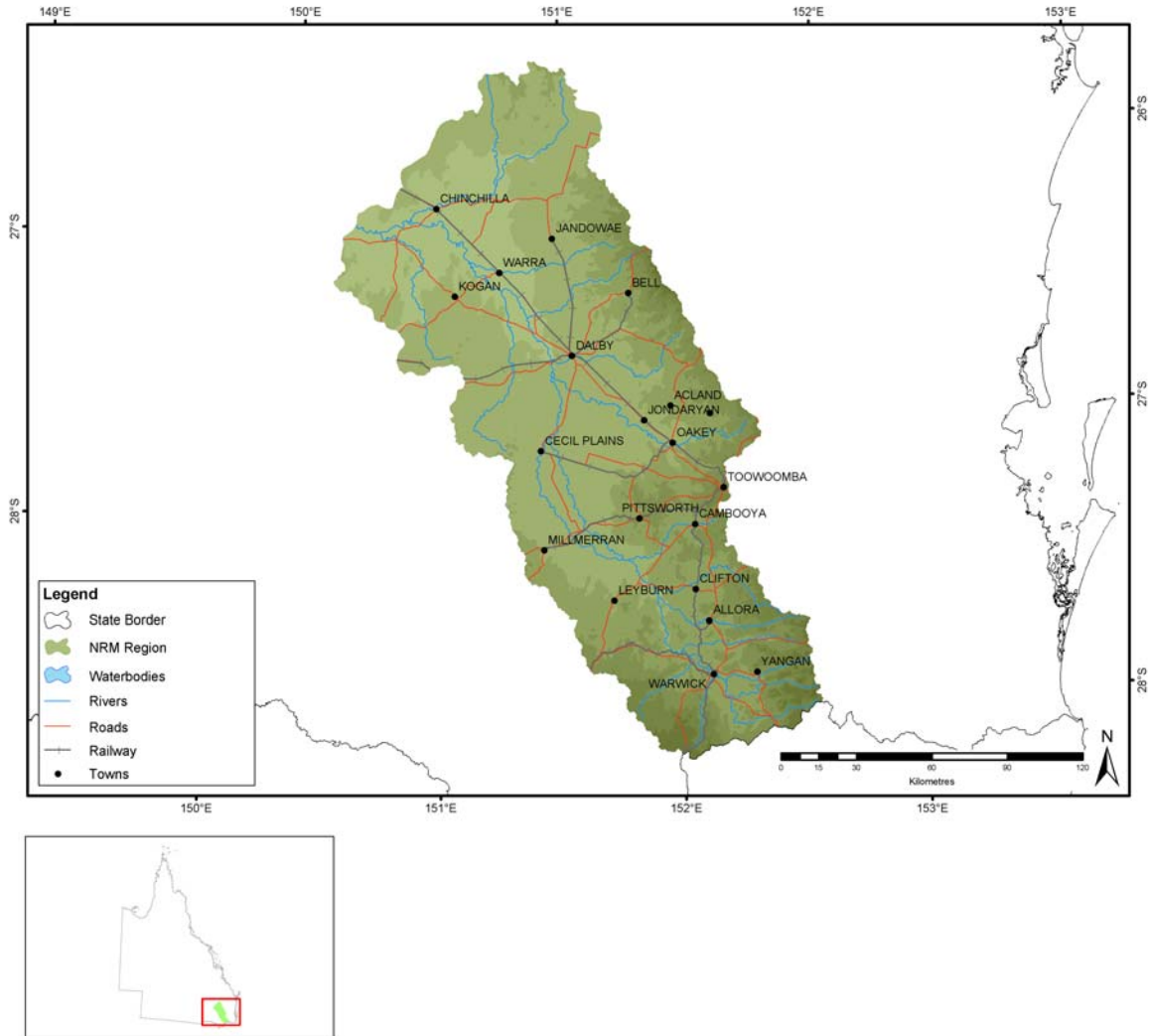
[Significant native species](#)

[Nutrients in aquatic environments](#)

[Significant invasive species](#)

3. [Target achievement summary](#)

## Administrative arrangements



Administrative Body: Condamine Catchment Natural Resource Management Corporation Limited

Trust region: Condamine

NAP region: Condamine

## Investment summary

This section provides an overall summary of approved investments and expenditure from the various investment streams.

Where applicable, it also details expenditure related to priority funding and regional investments based from accredited regional plans. For these investments, information is provided in relation to the matters for target addressed and the types of activities undertaken. Commencing this year in 2004-05, apart from in Table 1.1, Table 1.2 and Table 1.3, priority action funding and regional investments will be reported together.

**Table 1.1 Reported expenditure for approved investments in Condamine**

Funding stream	Activity Expenditure (\$)			
	July 04 - June 05		Total to June 05	
	NAP	Trust	NAP	Trust
Foundation funding	553,584		948,226	
Priority action	1,940,937	1,061,991	2,195,545	1,472,499
Regional investment	316,493	145,518	316,493	145,518
<b>Total</b>	<b>2,811,014</b>	<b>1,207,509</b>	<b>3,460,264</b>	<b>1,618,017</b>

**Table 1.2 Major focus of reported expenditure in Condamine**

Matter for target	Activity Expenditure (\$)			
	July 04 - June 05		Total to June 05	
	NAP	Trust	NAP	Trust
Land Salinity	20,309	10,370	20,309	10,370
Soil Condition	1,304,943		1,378,645	
Rivers and Wetlands	423,917	30,920	582,235	30,920
Native Vegetation	97,011		119,599	
Significant Native Species	55,661	428,771	55,661	428,771
Other Supporting Activities	909,173	737,448	1,303,815	1,147,956
<b>Total</b>	<b>2,811,014</b>	<b>1,207,509</b>	<b>3,460,264</b>	<b>1,618,017</b>

**Table 1.3 Types of activities in Condamine**

Activity Type	Activity Expenditure (\$)			
	July 04 - June 05		Total to June 05	
	NAP	Trust	NAP	Trust
Resource assessment	258,637		341,011	
Planning	539,239	145,518	637,771	145,518
Capacity building	1,738,654	677,766	2,151,266	1,088,274
On-ground activities	274,484	384,225	330,216	384,225
<b>Total</b>	<b>2,811,014</b>	<b>1,207,509</b>	<b>3,460,264</b>	<b>1,618,017</b>

## Investment summary by matter for target

Investments supported by the NAP and the regional component of the Trust, undertaken by the region on a priority basis or through approved regional investment strategies are focussed on the matters for target.

This section provides a summary of the major focus of investments and the reported expenditure related to each of these matters for target. In some cases, investments have had a major focus on more than one matter for target and are not able to be attributed to a particular matter for target. Activities that have been classified as 'other supporting activities', have not been reported in this section.

Each summary for a matter for target describes the expenditure of the activities that contribute to the matter for target. It also provides a description of the outputs achieved through these activities to the 30 June 2005.

Where appropriate to regions with approved investment strategies, each summary also details the management action targets and resource condition targets related to each matter for target addressed through the NAP and the Trust by the region. Where a region has an accredited investment plan and approved investment summary, section three of this Regional Summary summarises the region's assessment of progress towards the achievement of these targets.

## Land salinity

**Table 2.1.1 Activities with a major focus on land salinity in Condamine**

Activities	Activity Expenditure (\$)			
	July 04 - June 05		Total to June 05	
	NAP	Trust	NAP	Trust
Salinity Action Plan	20,309	10,370	20,309	10,370
<b>Total</b>	<b>20,309</b>	<b>10,370</b>	<b>20,309</b>	<b>10,370</b>

**Table 2.1.2 Management action targets with a major focus on land salinity in Condamine**

Management action target
10% increase in priority areas in 2005 levels of cropping and grazing areas adopting Current Recommended Practice (CRP), specifically including land salinity and saline groundwater by 2009.
10% increase in priority areas in 2005 levels of irrigation areas adopting Current Recommended Practice (CRP), specifically including land salinity and saline groundwater by 2009.
Benchmark impacts of salinity risk on infrastructure across the whole catchment at a shire scale by end of 2010.
Determine area of land affected by salinity by 2009.
Determine natural and man made levels of salinity on land by 2009.
Develop a MAT to define the level of implementation activities needed to achieve the resource condition by 2010.
Identify recharge/intake and discharge areas by 2009.
In priority areas develop a range of agricultural management options by 2008 to result in a no net impact on salinity.

**Table 2.1.3 Resource condition targets with a major focus on land salinity in Condamine**

Resource condition target
No further increase in area of land affected by salinity from 2009 levels by 2025
Reduce risk of salinity damage to priority at risk infrastructure by 50% in high salinity risk areas by 2025

## Soil condition

**Table 2.2.1 Activities with a major focus on soil condition in Condamine**

Activities	Activity Expenditure (\$)			
	July 04 - June 05		Total to June 05	
	NAP	Trust	NAP	Trust
Building Capacity through Integrated Area Wide Management	1,030,459		1,048,429	
Repair of unacceptable degradation	274,484		330,216	
<b>Total</b>	<b>1,304,943</b>		<b>1,378,645</b>	

**Table 2.2.2 Summary of outputs from activities with a major focus on soil condition in Condamine**

Outputs	July 04 - June 05			Total to July 05		
	NAP	Trust	Joint	NAP	Trust	Joint
<b>Resource assessment</b>						
Baseline, trend or condition studies for targets						
Number of studies				3		
Investigations (survey, inventory and mapping and data analysis)						
Area (hectares) surveyed by other studies	9			9		
Number of other studies	1			1		
Research and development studies						
Number of research and development studies undertaken	21			21		
<b>Planning</b>						
Integrated catchment or sub-catchment plans						
Number of sub-catchment plans developed	2,010			2,010		
<b>Capacity building</b>						
Awareness raising activities						
Number of demonstrations	6			6		
Number of displays developed	3			3		
Number of field days	10			10		
Number of media opportunities	17			17		
Number of other non-training forums	14			19		
Number of other non-training products or materials developed	18			18		
Number of participants at demonstrations in person-days	34			34		
Number of participants at field days in person-days	26			26		
Number of participants at other non-training forums in person-days	84			88		
Number of participants on study tours in person-days	37			37		
Number of study tours	2			2		
Quantity distributed	930			930		
Quantity of displays distributed	120			120		
Facilitation motivation and support activities						
Number of community groups or community projects assisted	18			18		
Number of FTE active community support positions (facilitators or coordinators)	4			4		
Skills and training activities						
Number of other key materials developed	5			7		
Number of participants at workshops in person-days	370			380		
Number of workshops held	8			9		
<b>On-ground activities</b>						

Outputs	July 04 - June 05			Total to July 05		
	NAP	Trust	Joint	NAP	Trust	Joint
<b>Conservation by agreements</b>						
Number of voluntary conservation agreements	65			65		
<b>Indigenous vegetation protected by fencing</b>						
Area (hectares) of riparian indigenous vegetation protected by fencing	46			46		
Area (hectares) of terrestrial indigenous vegetation protected by fencing	150			230		
Streambank length (km) of riparian indigenous vegetation protected by fencing	20			20		
<b>Indigenous vegetation enhanced/rehabilitated</b>						
Area (hectares) of terrestrial indigenous vegetation enhanced/rehabilitated	190			190		
<b>Revegetation with indigenous vegetation</b>						
Area (hectares) planted to riparian indigenous species	14			14		
Streambank length (km) of riparian revegetation	15			15		
<b>Riparian and waterway health</b>						
Length (km) of stream bed stabilised	8			8		
Number of off-stream (alternative) watering sites installed	6			6		
<b>Significant pest plant control</b>						
Area (hectares) of pest plant control	200			200		
<b>Soil management</b>						
Area (hectares) of land treated for soil erosion through engineering works	5,910			5,910		
Area (hectares) of land treated for soil erosion through exclusion fencing	56			56		
Number of soil erosion engineering sites	20			20		
Number of soil erosion exclusion fencing sites	3			3		
<b>Water contaminant management</b>						
Number of properties with dairy effluent control measures	4			4		
Number of properties with other effluent control works	4			4		
<b>Water use efficiency</b>						
Number of on-farms reuse systems	2			2		

**Table 2.2.3 Management action targets with a major focus on soil condition in Condamine**

Management action target
Finalise and develop CRPs including soil health targets for cropping and grazing industries by 2008
Stakeholders agreeing on soil health resource condition targets for cropping and grazing landscapes by 2007
Strategic partnerships with R&D Corporations developed to deliver coordinated R&D into soil health by 2006
Work with industry, Local Government, Landcare and agencies to support extension programs to increase adoption of CRPs within a subcatchment planning framework in urban and rural environments

**Table 2.2.4 Resource condition targets with a major focus on soil condition in Condamine**

Resource condition target
20% improved capacity above 2004 benchmarks (40%) of land managers undertaking and implementing the sustainable use of natural resources by 2020
Soil health in cropping and grazing landscapes achieving agreed targets (as defined in the indicators for matters for targets) as outlined in the CRPs by 2025

## Rivers and wetlands

**Table 2.3.1 Activities with a major focus on rivers and wetlands in Condamine**

Activities	Activity Expenditure (\$)			
	July 04 - June 05		Total to June 05	
	NAP	Trust	NAP	Trust
Condamine resource information system for target based NRM	258,637		341,011	
Improved monitoring programmes (Condamine)	125,735		201,679	
Water Action Plan	39,545	30,920	39,545	30,920
<b>Total</b>	<b>423,917</b>	<b>30,920</b>	<b>582,235</b>	<b>30,920</b>

**Table 2.3.2 Summary of outputs from activities with a major focus on rivers and wetlands in Condamine**

Outputs	July 04 - June 05			Total to July 05		
	NAP	Trust	Joint	NAP	Trust	Joint
<b>Resource assessment</b>						
Baseline, trend or condition studies for targets						
Not applicable	4			4		
Number of studies	11			17		
Decision support tools						
Number of other decision support tools developed	2			6		
Research and development studies						
Number of research and development studies undertaken	3			9		
<b>Capacity building</b>						
Awareness raising activities						
Number of displays developed	1			2		
Number of newsletters developed	3			6		
Number of other non-training forums	4			43		
Number of other non-training products or materials developed	8			10		
Number of participants at other non-training forums in person-days	36			85		
Quantity distributed	82			82		
Quantity of displays distributed	150			150		
Quantity of newsletters distributed	100			200		
Skills and training activities						
Number of other key materials developed	2			4		
Number of other skills and training events held	3			7		
Number of participants at other skills and training events in person-days	18			18		
Number of participants at training sessions in person-days	26			48		
Number of participants at workshops in person-days	7			7		
Number of training sessions held	4			7		
Number of workshops held	3			7		

**Table 2.3.3 Management action targets with a major focus on rivers and wetlands in Condamine**

Management action target
100% of local governments to develop urban stormwater quality management plans by 2010
20% reduction in seepage and evaporation losses from storage dams by 2008
25% of wetland land managers to maintain wetlands in "good" condition by 2008
30% improvement in the quality of urban stormwater runoff in all major urban areas in the catchment by 2010
80% of all storage dams have an operation maintenance plan based on scientific research by 2008
All local authorities to have a trade waste policy by 2005
All new developments (statutory) will adhere to building code of ethics for site protection by 2006
Determine a target for assessing and prioritising non urban sources of nutrients and turbidity that will assist delivery of the water quality targets by 2005.
Develop and implement management plans for these wetlands by 2008
Develop catchment-wide trade waste strategy for all industries, as part of a Regional Waste Management Strategy by 2008
Develop runoff management plans for 90% of the floodplain by 2006 to deliver an average in stream turbidity of 7 NTU for 85% of the time.
Develop the R&D needs for trade waste management options by 2006
Establish flexible voluntary agreements to protect 5 significant wetlands by 2006
Establish sustainable environmental flows in accordance with WRP by 2015
Establish the condition and flow requirements of 25% of known wetlands (>1 ha) by 2007
For existing WUE programs, an increase of 25% of water users implementing these programs by 2008
Identify places of trade waste production and incorporate the siting of disposal areas in IPA planning schemes by 2008
Implement 15% of works consistent with the priorities and target determined for assessing non-urban sources of nutrients and turbidity in 2005 by 2009.
Implement 40% of coordinated run off management plans for the floodplains by 2009
Implement works to reduce some trade waste components by 2006 (specific MAT outcomes to be developed by 2005)
Incorporate the outcomes of the WRP process into the Plan by 2006
Incorporate the ROP outcomes into the Plan when the process has been completed
Local government to develop technical solutions for water quality targets / guidelines and incorporate them in their planning schemes by 2008
Local government to develop water quality guidelines by 2008
New WUE programs to be developed and endorsed for 10% of high water use industries by 2009

**Table 2.3.4 Resource condition targets with a major focus on rivers and wetlands in Condamine**

Resource condition target
A specific RCT will be developed for the number and diversity of native fish, macro invertibrates and other aquatic species in watercourses in line with the MDBC Native Fish Strategy
Achieve a 10% improvement (from currently 43% of major stream lengths in moderate condition, and 42% degraded condition) in condition of stream reaches across the catchment by 2020
Achieve ecological outcome as specified in the Condamine Balonne Water Resource Plan by 2015
All local governments will ensure sustainable water access prior to approval of peri-urban and urban subdivisions by 2015
Maintain water quality (nitrogen, phosphorus, turbidity) at Chinchilla Weir within current national guidelines or state or local guidelines from 2004 levels by 2020
The condition of 20 regionally significant wetlands to be assessed within and held within AusRivAS Band A by 2015

## Nutrients in aquatic environments

**Table 2.4.1 Management action targets with a major focus on nutrients in aquatic environments in Condamine**

Management action target
10% of non ERA intensive animal managers achieving water quality outcomes by 2009
10% of non ERA intensive animal managers installing effluent management systems by 2009
All intensive animal industries have developed CRPs to include effluent management systems by 2010
Assess sources and determine targets for nutrients (Phosphorus and Nitrogen) and turbidity in priority subcatchments by 2006.
Determine current levels of contamination of surface and groundwater by intensive animal industries by 2008

**Table 2.4.2 Resource condition targets with a major focus on nutrients in aquatic environments in Condamine**

Resource condition target
50% of non-ERA intensive animal industries have effluent management systems achieving water quality outcomes (see W1) with regard to the contamination of surface and groundwater by 2020
Improve water quality by reducing the quantity of heavy metals, hydrocarbons and nutrients in trade waste in urban areas by 40% from 2002 levels by 2020

**Table 2.5.1 Management action targets with a major focus on surface water salinity in Condamine**

Management action target
50% of domestic household products containing sodium to be labeled (similar to phosphorus content) by 2009.
Establish end of catchment EC levels at Chinchilla Weir by end of 2004.
Establish levels of EC and targets for nineteen subcatchments by end 2005 that are reviewed every 5 years.
Identify and understand major sources of man made salinity (including urban populations) in streams by 2007.
Implement activities in priority subcatchments and from priority sources by 2006.
Upgrade 100% of local government waste water treatment plants in line with current EPA guidelines by 2010.

**Table 2.5.2 Resource condition targets with a major focus on surface water salinity in Condamine**

Resource condition target
Electrical Conductivity (EC) levels of water in stream meets established targets for the catchment by 2025

## Native vegetation

**Table 2.6.1 Activities with a major focus on native vegetation in Condamine**

Activities	Activity Expenditure (\$)			
	July 04 - June 05		Total to June 05	
	NAP	Trust	NAP	Trust
Changing landscape management to best practices (Condamine)	97,011		119,599	
<b>Total</b>	<b>97,011</b>		<b>119,599</b>	

**Table 2.6.2 Summary of outputs from activities with a major focus on native vegetation in Condamine**

Outputs	July 04 - June 05			Total to July 05		
	NAP	Trust	Joint	NAP	Trust	Joint
<b>Resource assessment</b>						
Investigations (survey, inventory and mapping and data analysis)						
Area (hectares) surveyed by salinity studies	280			280		
Area (hectares) surveyed by social studies	380,000			380,000		
Number of salinity studies	3			3		
Number of social studies	5			7		
<b>Planning</b>						
Improved practice codes or guidelines						
Number of best management practice codes developed	1			1		
Number of best management practice guidelines developed	1			1		
Property management plans						
Number of property management plans completed	3			5		
<b>Capacity building</b>						
Awareness raising activities						
Number of demonstrations	5			13		
Number of field days	5			13		
Number of media opportunities	5			9		
Number of other non-training forums	10			41		
Number of other non-training products or materials developed	1			1		
Number of participants at demonstrations in person-days	40			80		
Number of participants at field days in person-days	60			120		
Number of participants at other non-training forums in person-days	150			530		
Quantity distributed	5			5		
Facilitation motivation and support activities						
Number of community groups or community projects assisted	18			18		
Number of FTE active community support positions (facilitators or coordinators)	2			2		
Skills and training activities						
Number of course notes developed	1			1		
Number of other key materials developed	1			1		
Number of other skills and training events held	2			4		
Number of participants at other skills and training events in person-days	26			50		
Number of participants at training sessions in person-days	55			55		

Outputs	July 04 - June 05			Total to July 05		
	NAP	Trust	Joint	NAP	Trust	Joint
Number of participants at workshops in person-days	17			32		
Number of training sessions held	5			5		
Number of workshops held	3			6		
Quantity of course notes distributed	250			250		
Quantity of other key materials distributed	250			250		
<b>On-ground activities</b>						
Conservation by agreements						
Number of voluntary conservation agreements	3			3		
Revegetation with exotic vegetation						
Area (hectares) of terrestrial exotic perennial pastures	410			410		

**Table 2.6.3 Management action targets with a major focus on native vegetation in Condamine**

Management action target
90% adoption of sustainable silvicultural harvest practice and management in the harvested area by 2008
Achieve a 10% improvement in grazing management practices for regionally significant vegetation by 2010.
Achieve a 10% improvement in grazing management practices for remnant vegetation condition by 2010
Assess condition of and determine opportunities for management of regionally significant vegetation and set priorities by 2006
Assess condition of and determine opportunities for management of remnant and re-growth vegetation and set priorities by 2006
Assess the condition of major bio-regional corridors by 2006 to set RCT parameters
Assess the current extent of plantation harvesting and renewal to determine a sustainable forestry MAT by 2006
Establish MAT to revegetate on land that is not in a priority area
Implement a program to increase connectivity between remnants and corridors by 2008
Implement priority works to achieve 40% of the NC3 RCT by 2009
Implement priority works to achieve 40% of the NC4 RCT by 2009
Implement works to achieve a 2% improvement in the condition of riparian areas by 2009
Review current knowledge of riparian condition by 2006 to establish priorities
Three control plans developed and 2 implementation programs undertaken for regionally significant species not covered by a recovery plan by 2010

**Table 2.6.4 Resource condition targets with a major focus on native vegetation in Condamine**

Resource condition target
Establish RCT for increase in regionally significant vegetation by 2005
Five subcatchments with less than 30% remnant or woody vegetation coverage in 2003 will achieve a 10% increase in vegetation cover by 2018
Increase the area and improve the condition of major bio-regional corridors by 2015
Increase the extent of endangered regional ecosystems as at 2001 levels by 2025
Risk analysis options developed for high value assets vulnerable to damage from major runoff events across the floodplains by 2025

## Significant native species

**Table 2.7.1 Activities with a major focus on significant native species in Condamine**

Activities	Activity Expenditure (\$)			
	July 04 - June 05		Total to June 05	
	NAP	Trust	NAP	Trust
Integrated on-ground activities to support community-based nature conservation and sustainable agriculture outcomes		384,225		384,225
Vegetation and Biodiversity Action Plan	55,661	44,546	55,661	44,546
<b>Total</b>	<b>55,661</b>	<b>428,771</b>	<b>55,661</b>	<b>428,771</b>

**Table 2.7.2 Summary of outputs from activities with a major focus on significant native species in Condamine**

Outputs	July 04 - June 05			Total to July 05		
	NAP	Trust	Joint	NAP	Trust	Joint
<b>Resource assessment</b>						
Investigations (survey, inventory and mapping and data analysis)						
Number of social studies		1			1	
<b>On-ground activities</b>						
Wetlands health protected or enhanced						
Area (hectares) of wetlands with reinstated connectivity		5			5	
Significant pest vertebrate control						
Area (hectares) of pest animal control		4,150			4,150	
Type of pest animal (e.g.rabbits, foxes)		2,310			2,310	

**Table 2.7.3 Management action targets with a major focus on significant native species in Condamine**

Management action target
Determine if RCT and MATs will be needed for 'endangered' and 'of concern' ecosystems for condition
Determine the diversity of native fish, macro invertebrates and other aquatic species and set a resource condition target to achieve outcomes by 2008
Determine the extent of endangered regional ecosystems in the Condamine catchment by 2005 to set RCT
Determine the need for fish passage over obstructions in rivers and streams by 2006
Determine threats to endangered species and develop a recovery plan for a species every two years
Develop and implement a program with the intent to increase the distribution of grazing sensitive flora and fauna, including endangered species, through improved grazing management practices by 2010
Establish the flow and water quality requirements for aquatic flora and fauna with priority given to threatened species by 2008
Implement priority works to achieve 20% of the RCT by 2009
Undertake species audit by 2006 to set RCT parameters

**Table 2.7.4 Resource condition targets with a major focus on significant native species in Condamine**

Resource condition target
Increase the abundance and distribution of national and state endangered species from 2006 levels by 2020

**Table 2.8.1 Management action targets with a major focus on significant invasive species in Condamine**

Management action target
Conduct an extension, education and awareness campaign in all LGAs to raise awareness of coordinated programs and skills for control of priority agricultural pest animals
Decrease weeds of national significance by 2% of area by 2008
Determine the extent and impact of key agricultural pest animals in priority locations by 2006 to set MATs and RCT
Determine the extent and impact of key agricultural weeds in priority locations by 2006 to set MATs and RCT
Determine the extent and impact of priority pest animals in the Condamine catchment by 2006 to set MATs
Determine the extent and impact of priority weeds for nature conservation in the Condamine catchment by 2006 to set MATs
Develop and implement a management program to reduce or control the spread of priority weeds for nature conservation on 5000 ha by 2008
Investigate opportunities to contribute to R&D into biological control for key agricultural pest animals by 2006
Investigate opportunities to contribute to R&D into biological control for key agricultural weeds by 2006
Investigate opportunities to contribute to R&D into biological control for priority pest animals by 2006
Investigate opportunities to contribute to R&D into biological control for priority weeds for nature conservation by 2006
Land managers have the necessary skills and resources to achieve a no net increase in priority pest animals on 100 000 ha by 2010
Land managers have the necessary skills and resources to achieve a no net increase in priority weeds for nature conservation on 10 000 ha by 2010
Land managers have the necessary skills and resources to achieve decrease in key agricultural weeds by 2010
Manage the occurrence and impact of pest animals across the catchment from 2005 levels through a coordinated program by 2010
Manage the occurrence and impact of weeds across the catchment from 2005 levels through a coordinated program by 2010

**Table 2.8.2 Resource condition targets with a major focus on significant invasive species in Condamine**

Resource condition target
Decrease the spread of key agricultural pest animals across the catchment by 2013
Decrease the spread of key agricultural weeds across the catchment by 2013
No net increase in the extent and impact of priority pest animals by 2020
No net increase in the extent and impact of priority weeds for nature conservation from 2006 extent by 2020

## Target summary

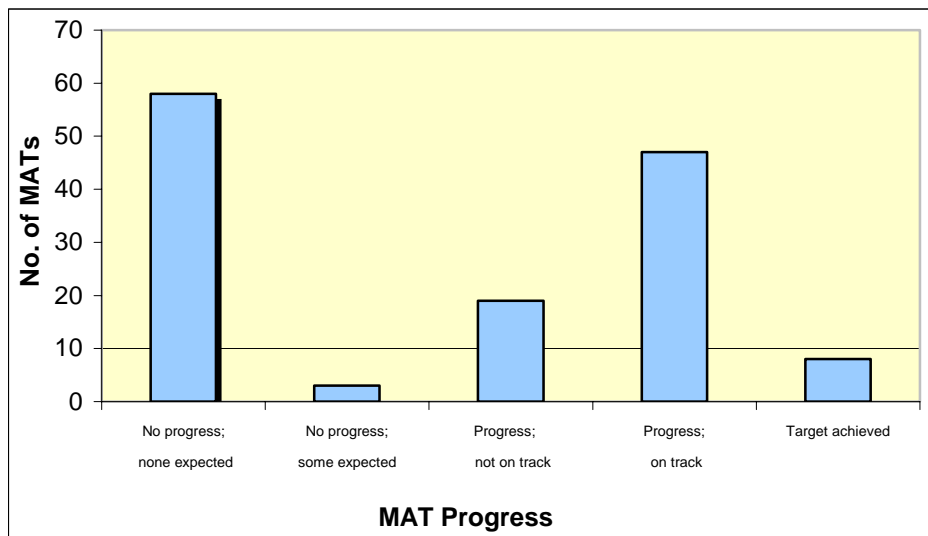
Approved investment strategies detail management action targets (MATs) and resource condition targets (RCTs) targets having a major focus on matters for target, and other supporting activities.

Regions were asked to make an assessment of progress towards the achievement of the targets using the available evidence.

Progress towards achieving each MAT was assessed using the following five-point scale:

- Target achieved or exceeded.
- Progress and on track.
- Progress, but not on track.
- No progress, but some progress was expected.
- No progress, but none expected at this time.

**Figure 3.1 Progress towards achieving Management Action Targets in Condamine**



Progress towards achieving each RCT was assessed using the following five-point scale:

- Evidence of target achieved or exceeded.
- Evidence of progress.
- Evidence of no progress.
- Evidence of regress.
- Insufficient evidence to assess.

**Figure 3.2 Progress towards achieving Resource Condition Targets in Condamine**

