



Regional Summary 2.02

Central West Region

New South Wales

This Chapter

The first section of the chapter provides an overall summary of investments supported by the NAP and the regional component of the Trust, within the region to 30 June 2005.

The second section summarises the region's investments against the matters for target addressed within the region. This section details the resource condition targets and related management action targets specific to each matter for target addressed through the NAP and the Trust by the region. It also provides a summary of the type of activities supported by these investments and progress in the achievements of these activities to the 30 June 2005.

The third section of the chapter provides the region's assessment of their progress in achieving management action targets and resource condition targets to date, and for those targets anticipated to be achieved during 2004-05.

Sections

1. [Investment summary](#)

2. [Investment summary by matter for target](#)

[Land salinity](#)

[Surface water salinity](#)

[Soil condition](#)

[Native vegetation](#)

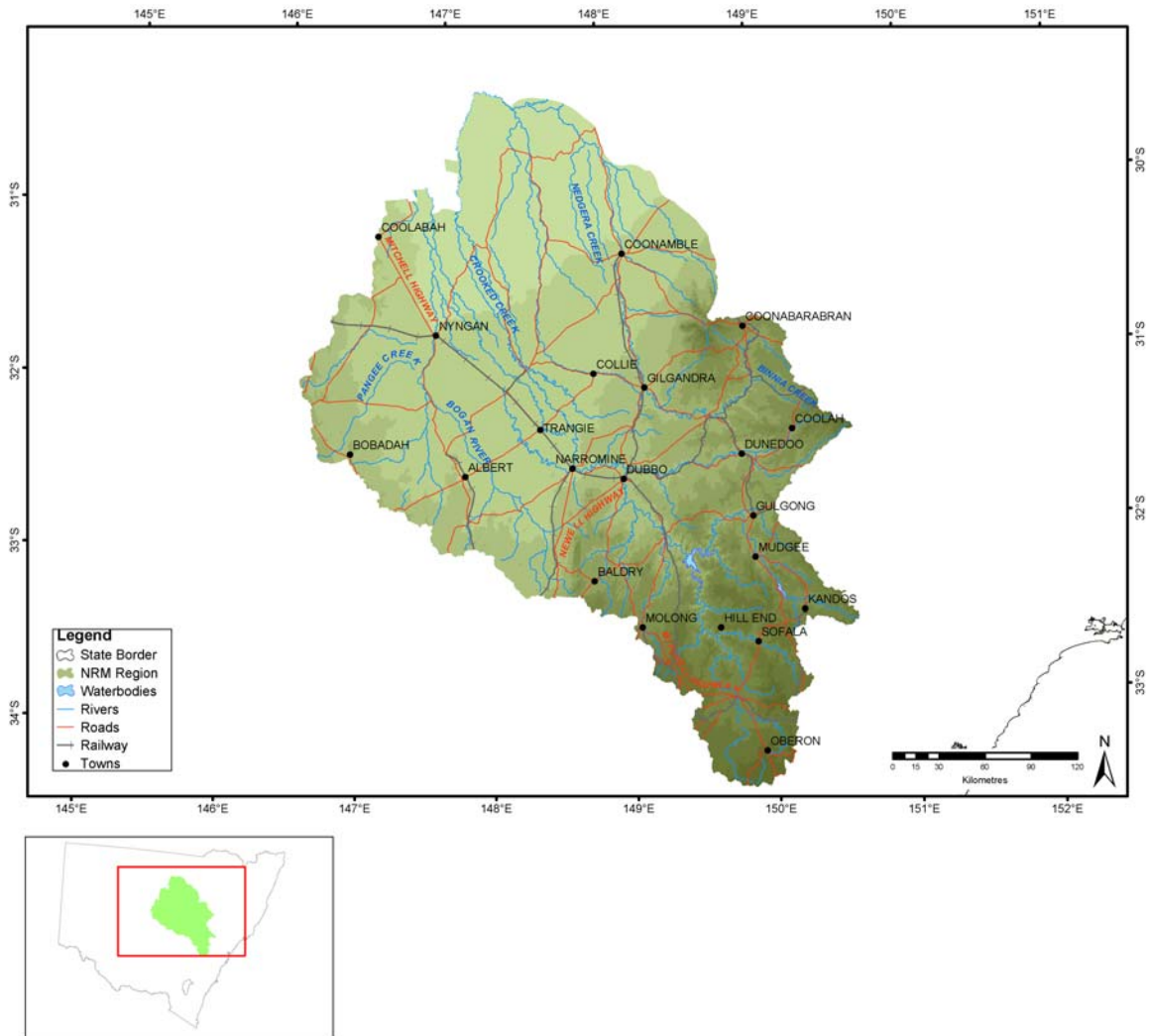
[Rivers and wetlands](#)

[Nutrients in aquatic environments](#)

[Turbidity in aquatic environments](#)

3. [Target achievement summary](#)

Administrative arrangements



Administrative Body: Central West Catchment Management Authority

Trust region: Central West

NAP region: Central West

Investment summary

This section provides an overall summary of approved investments and expenditure from the various investment streams.

Where applicable, it also details expenditure related to priority funding and regional investments based from accredited regional plans. For these investments, information is provided in relation to the matters for target addressed and the types of activities undertaken. Commencing this year in 2004-05, apart from in Table 1.1, Table 1.2 and Table 1.3, priority action funding and regional investments will be reported together.

Table 1.1 Reported expenditure for approved investments in Central West

Funding stream	Activity Expenditure (\$)			
	July 04 - June 05		Total to June 05	
	NAP	Trust	NAP	Trust
Priority action	309,628	300,462	513,086	414,186
Regional investment	1,486,615	226,351	1,486,615	226,351
Regional competitive		201,929		201,929
Total	1,796,243	728,741	1,999,701	842,465

Table 1.2 Major focus of reported expenditure in Central West

Matter for target	Activity Expenditure (\$)			
	July 04 - June 05		Total to June 05	
	NAP	Trust	NAP	Trust
Land Salinity	365,124	157,617	568,582	229,217
Soil Condition	203,619		203,619	
Rivers and Wetlands		201,929		201,929
Nutrients in Aquatic Environments	58,077		58,077	
Turbidity in Aquatic Environments	152,608		152,608	
Surface Water Salinity	17,183		17,183	
Native Vegetation	235,342	344,774	235,342	386,898
Other Supporting Activities	764,291	24,422	764,291	24,422
Total	1,796,243	728,741	1,999,701	842,465

Table 1.3 Types of activities in Central West

Activity Type	Activity Expenditure (\$)			
	July 04 - June 05		Total to June 05	
	NAP	Trust	NAP	Trust
Resource assessment	131,462	217,617	334,920	329,341
Planning	116		116	
Capacity building	756,428	309,196	756,428	311,196
On-ground activities	908,238	201,929	908,238	201,929
Total	1,796,243	728,741	1,999,701	842,465

Investment summary by matter for target

Investments supported by the NAP and the regional component of the Trust, undertaken by the region on a priority basis or through approved regional investment strategies are focussed on the matters for target.

This section provides a summary of the major focus of investments and the reported expenditure related to each of these matters for target. In some cases, investments have had a major focus on more than one matter for target and are not able to be attributed to a particular matter for target. Activities that have been classified as 'other supporting activities', have not been reported in this section.

Each summary for a matter for target describes the expenditure of the activities that contribute to the matter for target. It also provides a description of the outputs achieved through these activities to the 30 June 2005.

Where appropriate to regions with approved investment strategies, each summary also details the management action targets and resource condition targets related to each matter for target addressed through the NAP and the Trust by the region. Where a region has an accredited investment plan and approved investment summary, section three of this Regional Summary summarises the region's assessment of progress towards the achievement of these targets.

Land salinity

Table 2.1.1 Activities with a major focus on land salinity in Central West

Activities	Activity Expenditure (\$)			
	July 04 - June 05		Total to June 05	
	NAP	Trust	NAP	Trust
Central West Salinity Recharge Identification and Investigations Project		157,617		229,217
Cudgegong and Upper Macquarie Salinity Prioritisation and Strategic Direction	127,273		330,731	
Salinity - Effective Interception Planting	237,090		237,090	
Salinity - Management of Perennials	761		761	
Total	365,124	157,617	568,582	229,217

Table 2.1.2 Summary of outputs from activities with a major focus on land salinity in Central West

Outputs	July 04 - June 05			Total to July 05		
	NAP	Trust	Joint	NAP	Trust	Joint
Resource assessment						
Decision support tools						
Number of information management systems developed	2			8		
Number of other decision support tools developed	2			4		
Investigations (survey, inventory and mapping and data analysis)						
Area (hectares) surveyed by groundwater studies	1.20M	6,000		1.20M	10,000	
Area (hectares) surveyed by salinity studies	2.40M			2.40M		
Area (hectares) surveyed by social studies	1.20M			1.20M		
Area (hectares) surveyed by soil studies		12,000			20,000	
Number of groundwater studies	1	2		5	12	
Number of salinity studies	2			25		
Number of social studies	6			12		
Number of soil studies		4			24	
Planning						
Improved practice codes or guidelines						
Number of best management practice guidelines developed	2			4		
Integrated catchment or sub-catchment plans						
Number of sub-catchment plans developed	4			10		
Capacity building						
Awareness raising activities						
Number of demonstrations	6			16		
Number of field days	3			7		
Number of media opportunities	4			6		
Number of participants at demonstrations in person-days	120			240		
On-ground activities						
Indigenous vegetation enhanced/rehabilitated						
Area (hectares) of terrestrial indigenous vegetation enhanced/rehabilitated	12,410			12,410		

Table 2.1.3 Management action targets with a major focus on land salinity in Central West

Management action target
By 2012, establish and manage a site specific range of large forestry plantings in 10% of the physical area of key upland landscapes
By 2012, establish and manage large interception plantings in 30% of suitable sites in identified key upland landscapes
By 2012, increase by 30% the area of well managed perennials (including native grasses) in identified recharge landscapes across the catchments
By 2012, reduce accessions to the water table by increasing water use efficiency in irrigation farming systems on 70% of irrigated land
By 2012, reduce accessions to the watertable by increasing water use efficiency in dryland farming systems on 50% of cropped landscapes in the catchments

Soil condition

Table 2.2.1 Activities with a major focus on soil condition in Central West

Activities	Activity Expenditure (\$)			
	July 04 - June 05		Total to June 05	
	NAP	Trust	NAP	Trust
Indigenous Involvement in Sustainable Land Management.	7,635		7,635	
Management of Sodic Soils	2,776		2,776	
Soil Health Program in Croplands	182,437		182,437	
Soil Health program in Pasture Lands	10,771		10,771	
Total	203,619		203,619	

Table 2.2.2 Summary of outputs from activities with a major focus on soil condition in Central West

Outputs	July 04 - June 05			Total to July 05		
	NAP	Trust	Joint	NAP	Trust	Joint
Capacity building						
Facilitation motivation and support activities						
Number of community groups or community projects assisted	5			5		
On-ground activities						
Soil management						
Area (hectares) of soil treatment for other than erosion, salinity or acid sulfate soils	72,530			72,530		

Table 2.2.3 Management action targets with a major focus on soil condition in Central West

Management action target
By 2012, 50% of low productivity arable pasture land will have a desirable perennial plant component greater than 20% of pasture composition
By 2012, 50% of pasture land will have a desirable perennial plant component greater than 40% of pasture composition
By 2012, 80% of cultivated lands managed under minimum tillage
By 2012, the area of bare and degrading sodic soils is reduced by 25%

Table 2.2.4 Resource condition targets with a major focus on soil condition in Central West

Resource condition target
Land use which meets critical thresholds 80% of the time for a range of landscape specific criteria in the catchment by 2012

Table 2.3.1 Management action targets with a major focus on rivers and wetlands in Central West

Management action target
By 2012, improve the diversity of in-stream habitat within 20% of streams identified as having poor-moderate habitat ratings
By 2012, maintain the extent and health of nationally listed and regionally significant wetlands within the landscape

Table 2.3.2 Resource condition targets with a major focus on rivers and wetlands in Central West

Resource condition target
By 2012, improve surface and groundwater system health across the catchment as measured by flow regimes to meet the MDBC cap environmental flow rules and water sharing plans
By 2012, improve surface and groundwater system health across the catchment as measured by temperature to be maintained or restored to within 2 degrees Celsius of natural levels

Nutrients in aquatic environments

Table 2.4.1 Activities with a major focus on nutrients in aquatic environments in Central West

Activities	Activity Expenditure (\$)			
	July 04 - June 05		Total to June 05	
	NAP	Trust	NAP	Trust
Innovative Agricultural Systems	30,832		30,832	
Nutrient Management Program	27,245		27,245	
Total	58,077		58,077	

Table 2.4.2 Summary of outputs from activities with a major focus on nutrients in aquatic environments in Central West

Outputs	July 04 - June 05			Total to July 05		
	NAP	Trust	Joint	NAP	Trust	Joint
On-ground activities						
Riparian and waterway health						
Length (km) of stream bank stabilised	9			9		

Table 2.4.3 Management action targets with a major focus on nutrients in aquatic environments in Central West

Management action target
By 2012, establish and maintain effectively managed perennial vegetated buffer strips along a minimum of 20% of the length of streams identified as being contributors of high nutrient loads (maintain if currently greater than 20%)

Table 2.4.4 Resource condition targets with a major focus on nutrients in aquatic environments in Central West

Resource condition target
By 2012, improve surface and groundwater system health across the catchment as measured by faecal coliform levels to achieve primary contact levels at key recreational sites and homestead protection levels at all other sites
By 2012, improve surface and groundwater system health across the catchment as measured by: 20% reduction in the frequency of high alert blue green algal blooms

Turbidity in aquatic environments

Table 2.5.1 Activities with a major focus on turbidity in aquatic environments in Central West

Activities	Activity Expenditure (\$)			
	July 04 - June 05		Total to June 05	
	NAP	Trust	NAP	Trust
Management of Stream Bank Erosion	77,468		77,468	
Sediment Management	75,140		75,140	
Total	152,608		152,608	

Table 2.5.2 Summary of outputs from activities with a major focus on turbidity in aquatic environments in Central West

Outputs	July 04 - June 05			Total to July 05		
	NAP	Trust	Joint	NAP	Trust	Joint
On-ground activities						
Riparian and waterway health						
Length (km) of stream bank stabilised	33			33		

Table 2.5.3 Management action targets with a major focus on turbidity in aquatic environments in Central West

Management action target
By 2012, control streambank erosion and bed lowering in 10% of identified priority streams and manage flow regimes to minimise streambank erosion in all regulated river systems
By 2012, stabilise and manage 40% of active gully systems in identified priority sub-catchments to control sediment migration within the upland catchment

Table 2.5.4 Resource condition targets with a major focus on turbidity in aquatic environments in Central West

Resource condition target
By 2012, improve surface and groundwater system health across the catchment as measured by: 20% improvement on current turbidity levels, 50% of the time in the Macquarie, Cudgegong, Castlereagh and Bogan Rivers
By 2012, improve surface and groundwater system health across the catchment as measured by: Chemicals and hazardous substances to be reduced below ecosystem protection levels at all times

Surface water salinity

Table 2.6.1 Activities with a major focus on surface water salinity in Central West

Activities	Activity Expenditure (\$)			
	July 04 - June 05		Total to June 05	
	NAP	Trust	NAP	Trust
Salinity - Increased Water use Efficiency	17,183		17,183	
Total	17,183		17,183	

Table 2.6.2 Summary of outputs from activities with a major focus on surface water salinity in Central West

Outputs	July 04 - June 05			Total to July 05		
	NAP	Trust	Joint	NAP	Trust	Joint
Resource assessment						
Investigations (survey, inventory and mapping and data analysis)						
Area (hectares) surveyed by salinity studies	9,000			10,000		
Number of salinity studies	26			26		

Table 2.6.3 Resource condition targets with a major focus on surface water salinity in Central West

Resource condition target
By 2010, the Bogan River at Gongolgon will be equal to or less than: 50th percentile for salinity concentration levels at 550EC
By 2010, the Bogan River at Gongolgon will be equal to or less than: 50th percentile for salt load at 30,000 tonnes annually
By 2010, the Castlereagh River at Coonamble will be equal to or less than: 50th percentile for salinity concentration levels at 315 EC
By 2010, the Castlereagh River at Coonamble will be equal to or less than: 50th percentile for salt load at 18,000 tonnes annually
By 2010, the Macquarie River at Carinda will be equal to or less than: 50th percentile for salinity concentration levels at 500 EC
By 2010, the Macquarie River at Carinda will be equal to or less than: 50th percentile for salt load at 35,000 tonnes annually

Native vegetation

Table 2.7.1 Activities with a major focus on native vegetation in Central West

Activities	Activity Expenditure (\$)			
	July 04 - June 05		Total to June 05	
	NAP	Trust	NAP	Trust
Development and Piloting of an Effective Integrated Property Management Plan (IPMP) Template for use by Land Managers Within the Central West Catchment of NSW.		82,845		84,845
Development of Property Management Plans	116		116	
Foundation Building for Strategic Investment in Vegetation Management at a Landscape Scale - Central West Catchment		60,000		100,124
Management of High Conservation Value Areas	201,929	201,929	201,929	201,929
Management of Native Riparian Vegetation.	13,434		13,434	
Salinity - Remnant Vegetation Retention.	19,863		19,863	
Total	235,342	344,774	235,342	386,898

Table 2.7.2 Summary of outputs from activities with a major focus on native vegetation in Central West

Outputs	July 04 - June 05			Total to July 05		
	NAP	Trust	Joint	NAP	Trust	Joint
Resource assessment						
Baseline, trend or condition studies for targets						
Number of studies		4			4	
Decision support tools						
Number of models developed		1			1	
Investigations (survey, inventory and mapping and data analysis)						
Area (hectares) surveyed by other studies		10,000			10,000	
Area (hectares) surveyed by vegetation studies		2.00M			2.00M	
Number of other studies		34			34	
Number of vegetation studies		2			2	
Planning						
Improved practice codes or guidelines						
Number of best management practice guidelines developed		1			1	
Property management plans						
Number of property management plans completed	76	69		76	69	
Capacity building						
Awareness raising activities						
Number of other non-training forums		1			1	
Number of participants at other non-training forums in person-days					20	
On-ground activities						
Indigenous vegetation enhanced/rehabilitated						
Area (hectares) of terrestrial indigenous vegetation enhanced/rehabilitated	46,740			46,740		
Riparian and waterway health						
Length of in-stream habitat established	10			10		
Number of large woody debris installed	2			2		
Management of significant species or ecological communities						
Area (hectares) protected by fencing specifically for significant species/community protection			5,060			5,060

Table 2.7.3 Management action targets with a major focus on native vegetation in Central West

Management action target
By 2012, maintain and enhance native riparian vegetation identified as being slightly degraded along all streams, and improve highly degraded native riparian vegetation along 15% of streams
From 2002 retain and manage existing remnant vegetation within priority key saline landscapes and by 2012 improve the structural characteristics of 30% of that vegetation
Retain all significant vegetation communities and by 2012 have improved management to achieve an enhancement in condition in 50% of those areas
The current area of native vegetation across the catchment is not reduced and that by 2012 active management is undertaken in 30% of this area for an improvement in quality

Table 2.7.4 Resource condition targets with a major focus on native vegetation in Central West

Resource condition target
By 2012, 20% of the catchment area is managed primarily for native biodiversity and essential ecosystem function, with all habitat types represented as functional ecological systems

Target summary

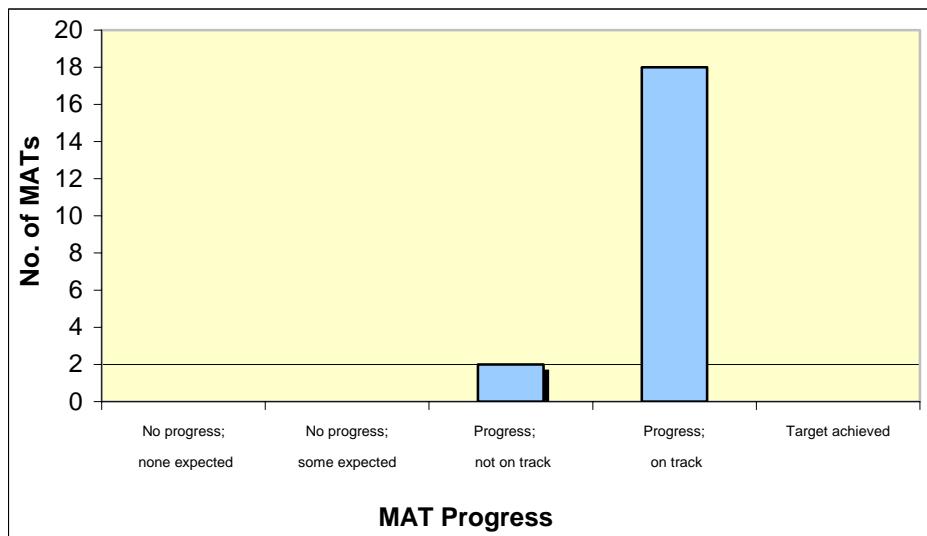
Approved investment strategies detail management action targets (MATs) and resource condition targets (RCTs) targets having a major focus on matters for target, and other supporting activities.

Regions were asked to make an assessment of progress towards the achievement of the targets using the available evidence.

Progress towards achieving each MAT was assessed using the following five-point scale:

- Target achieved or exceeded.
- Progress and on track.
- Progress, but not on track.
- No progress, but some progress was expected.
- No progress, but none expected at this time.

Figure 3.1 Progress towards achieving Management Action Targets in Central West



Progress towards achieving each RCT was assessed using the following five-point scale:

- Evidence of target achieved or exceeded.
- Evidence of progress.
- Evidence of no progress.
- Evidence of regress.
- Insufficient evidence to assess.

Figure 3.2 Progress towards achieving Resource Condition Targets in Central West

