



Regional Summary 4.03

Burnett - Mary Region

Queensland

This Chapter

The first section of the chapter provides an overall summary of investments supported by the NAP and the regional component of the Trust, within the region to 30 June 2005.

The second section summarises the region's investments against the matters for target addressed within the region. This section details the resource condition targets and related management action targets specific to each matter for target addressed through the NAP and the Trust by the region. It also provides a summary of the type of activities supported by these investments and progress in the achievements of these activities to the 30 June 2005.

Sections

1. [Investment summary](#)
2. [Investment summary by matter for target](#)

[Land salinity](#)

[Rivers and wetlands](#)

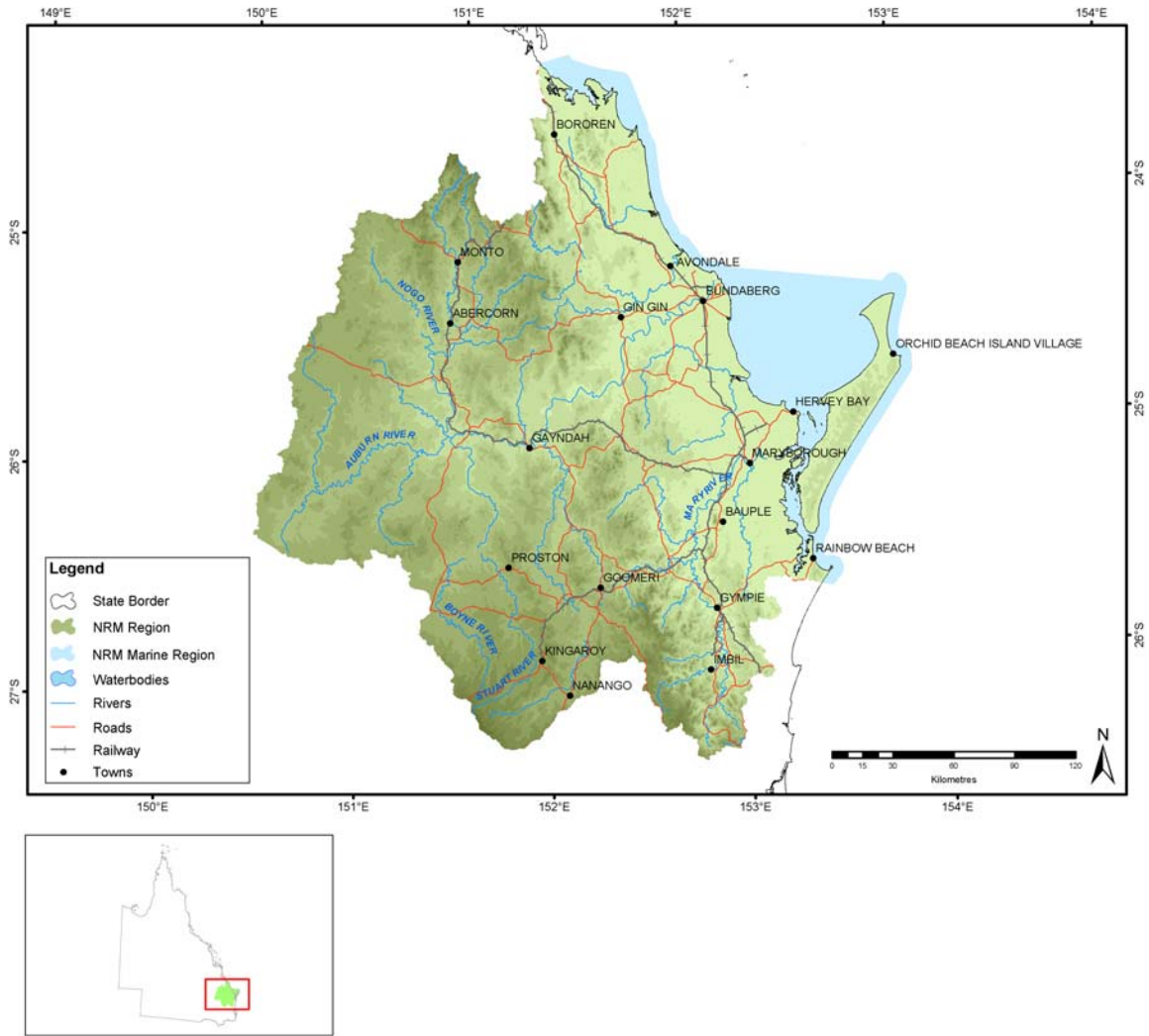
[Significant native species](#)

[Estuarine, coastal and marine](#)

[Significant invasive species](#)

[Turbidity in aquatic environments](#)

Administrative arrangements



Administrative Body: Burnett Mary Regional Group for Natural Resource Management Incorporated

Trust region: Burnett Mary

NAP region: Burnett Mary

Investment summary

This section provides an overall summary of approved investments and expenditure from the various investment streams.

Where applicable, it also details expenditure related to priority funding and regional investments based from accredited regional plans. For these investments, information is provided in relation to the matters for target addressed and the types of activities undertaken. Commencing this year in 2004-05, apart from in Table 1.1, Table 1.2 and Table 1.3, priority action funding and regional investments will be reported together.

Table 1.1 Reported expenditure for approved investments in Burnett - Mary

Funding stream	Activity Expenditure (\$)			
	July 04 - June 05		Total to June 05	
	NAP	Trust	NAP	Trust
Foundation funding	439,103	439,103	842,676	439,103
Priority action	1,611,151	872,849	1,611,151	1,147,505
Regional investment	71,017	10,944	71,017	10,944
Total	2,121,271	1,322,896	2,524,844	1,597,552

Table 1.2 Major focus of reported expenditure in Burnett - Mary

Matter for target	Activity Expenditure (\$)			
	July 04 - June 05		Total to June 05	
	NAP	Trust	NAP	Trust
Land Salinity	2,962		2,962	
Rivers and Wetlands	881,198		881,198	
Turbidity in Aquatic Environments	490,364		490,364	
Significant Native Species		296,512		296,512
Significant Invasive Species		218,817		218,817
Estuarine, Coastal and Marine		4,183		4,183
Other Supporting Activities	746,747	803,384	1,150,320	1,078,040
Total	2,121,271	1,322,896	2,524,844	1,597,552

Table 1.3 Types of activities in Burnett - Mary

Activity Type	Activity Expenditure (\$)			
	July 04 - June 05		Total to June 05	
	NAP	Trust	NAP	Trust
Resource assessment	1,401,627	293,212	1,401,627	293,212
Planning	471,349	439,103	874,922	439,103
Capacity building	242,461	364,281	242,461	638,937
On-ground activities	5,834	226,300	5,834	226,300
Total	2,121,271	1,322,896	2,524,844	1,597,552

Investment summary by matter for target

Investments supported by the NAP and the regional component of the Trust, undertaken by the region on a priority basis or through approved regional investment strategies are focussed on the matters for target.

This section provides a summary of the major focus of investments and the reported expenditure related to each of these matters for target. In some cases, investments have had a major focus on more than one matter for target and are not able to be attributed to a particular matter for target. Activities that have been classified as 'other supporting activities', have not been reported in this section.

Each summary for a matter for target describes the expenditure of the activities that contribute to the matter for target. It also provides a description of the outputs achieved through these activities to the 30 June 2005.

Where appropriate to regions with approved investment strategies, each summary also details the management action targets and resource condition targets related to each matter for target addressed through the NAP and the Trust by the region. Where a region has an accredited investment plan and approved investment summary, section three of this Regional Summary summarises the region's assessment of progress towards the achievement of these targets.

Land salinity

Table 2.1.1 Activities with a major focus on land salinity in Burnett - Mary

Activities	Activity Expenditure (\$)			
	July 04 - June 05		Total to June 05	
	NAP	Trust	NAP	Trust
Sustainable LandUse	2,962		2,962	
Total	2,962		2,962	

Rivers and wetlands

Table 2.2.1 Activities with a major focus on rivers and wetlands in Burnett - Mary

Activities	Activity Expenditure (\$)			
	July 04 - June 05		Total to June 05	
	NAP	Trust	NAP	Trust
Water Quality	2,872		2,872	
Water Quality Monitoring Networks	878,326		878,326	
Total	881,198		881,198	

Table 2.2.2 Summary of outputs from activities with a major focus on rivers and wetlands in Burnett - Mary

Outputs	July 04 - June 05			Total to July 05		
	NAP	Trust	Joint	NAP	Trust	Joint
Resource assessment						
Baseline, trend or condition studies for targets						
Number of sites monitored	9			9		
Number of studies	27			29		
Investigations (survey, inventory and mapping and data analysis)						
Area (hectares) surveyed by vegetation studies	2.40M			2.40M		
Number of vegetation studies	10			20		
Capacity building						
Skills and training activities						
Number of participants at training sessions in person-days	160			160		
Number of participants at workshops in person-days	77			77		
Number of training sessions held	10			10		
Number of workshops held	13			13		

Turbidity in aquatic environments

Table 2.3.1 Activities with a major focus on turbidity in aquatic environments in Burnett - Mary

Activities	Activity Expenditure (\$)			
	July 04 - June 05		Total to June 05	
	NAP	Trust	NAP	Trust
Land and Vegetation Management - adapt and develop GLM package for B/Mary region	490,364		490,364	
Total	490,364		490,364	

Table 2.3.2 Summary of outputs from activities with a major focus on turbidity in aquatic environments in Burnett - Mary

Outputs	July 04 - June 05			Total to July 05		
	NAP	Trust	Joint	NAP	Trust	Joint
Resource assessment						
Baseline, trend or condition studies for targets						
Number of studies	2			2		
Planning						
Improved practice codes or guidelines						
Number of best management practice guidelines developed	3			3		
Integrated catchment or sub-catchment plans						
Number of sub-catchment plans developed	1			1		
Capacity building						
Awareness raising activities						
Number of field days	2			4		
Number of media opportunities	14			28		
Number of other non-training forums	8			16		
Number of other non-training products or materials developed	1			1		
Number of participants at field days in person-days	150			300		
Number of participants at other non-training forums in person-days	80			160		
Quantity distributed	380			380		
Facilitation motivation and support activities						
Number of community groups or community projects assisted	42			42		
Skills and training activities						
Number of other skills and training events held	14			16		
Number of participants at other skills and training events in person-days	230			380		
Number of participants at training sessions in person-days	80			140		
Number of training sessions held	6			8		

Significant native species

Table 2.4.1 Activities with a major focus on significant native species in Burnett - Mary

Activities	Activity Expenditure (\$)			
	July 04 - June 05		Total to June 05	
	NAP	Trust	NAP	Trust
Biodiversity Conservation		3,300		3,300
Science and practice to improve biodiversity		293,212		293,212
Total		296,512		296,512

Table 2.4.2 Summary of outputs from activities with a major focus on significant native species in Burnett - Mary

Outputs	July 04 - June 05			Total to July 05		
	NAP	Trust	Joint	NAP	Trust	Joint
Resource assessment						
Investigations (survey, inventory and mapping and data analysis)						
Area (hectares) surveyed by other studies		1.10M			1.10M	
Number of other studies		6			6	
Capacity building						
Awareness raising activities						
Number of media opportunities		2			2	
Number of other non-training forums		4			6	
Number of other non-training products or materials developed		5			5	
Number of participants at other non-training forums in person-days		50			70	
Facilitation motivation and support activities						
Number of FTE active community support positions (facilitators or coordinators)		6			6	
Skills and training activities						
Number of other skills and training events held		1			2	
Number of participants at other skills and training events in person-days		18			35	

Significant invasive species

Table 2.5.1 Activities with a major focus on significant invasive species in Burnett - Mary

Activities	Activity Expenditure (\$)			
	July 04 - June 05		Total to June 05	
	NAP	Trust	NAP	Trust
Towards the integrated management of terrestrial and aquatic weeds of national, state and regional significance		215,356		215,356
Weeds and Pest Management		3,461		3,461
Total		218,817		218,817

Table 2.5.2 Summary of outputs from activities with a major focus on significant invasive species in Burnett - Mary

Outputs	July 04 - June 05			Total to July 05		
	NAP	Trust	Joint	NAP	Trust	Joint
Resource assessment						
Decision support tools						
Number of other decision support tools developed		14			26	
Research and development studies						
Number of research and development studies undertaken		4			4	
Capacity building						
Awareness raising activities						
Number of other non-training forums		8			8	
Number of other non-training products or materials developed		24			24	
Number of participants at other non-training forums in person-days		1,660			1,660	
Quantity distributed		400			400	
Skills and training activities						
Number of other key materials developed		1			1	
Quantity of other key materials distributed		400			400	

Estuarine, coastal and marine

Table 2.6.1 Activities with a major focus on estuarine, coastal and marine in Burnett - Mary

Activities	Activity Expenditure (\$)			
	July 04 - June 05		Total to June 05	
	NAP	Trust	NAP	Trust
Coastal and Marine Management		4,183		4,183
Total		4,183		4,183