



Regional Summary 4.02

Burdekin Region

Queensland

This Chapter

The first section of the chapter provides an overall summary of investments supported by the NAP and the regional component of the Trust, within the region to 30 June 2005.

The second section summarises the region's investments against the matters for target addressed within the region. This section details the resource condition targets and related management action targets specific to each matter for target addressed through the NAP and the Trust by the region. It also provides a summary of the type of activities supported by these investments and progress in the achievements of these activities to the 30 June 2005.

Sections

1. [Investment summary](#)

2. [Investment summary by matter for target](#)

[Land salinity](#)

[Soil condition](#)

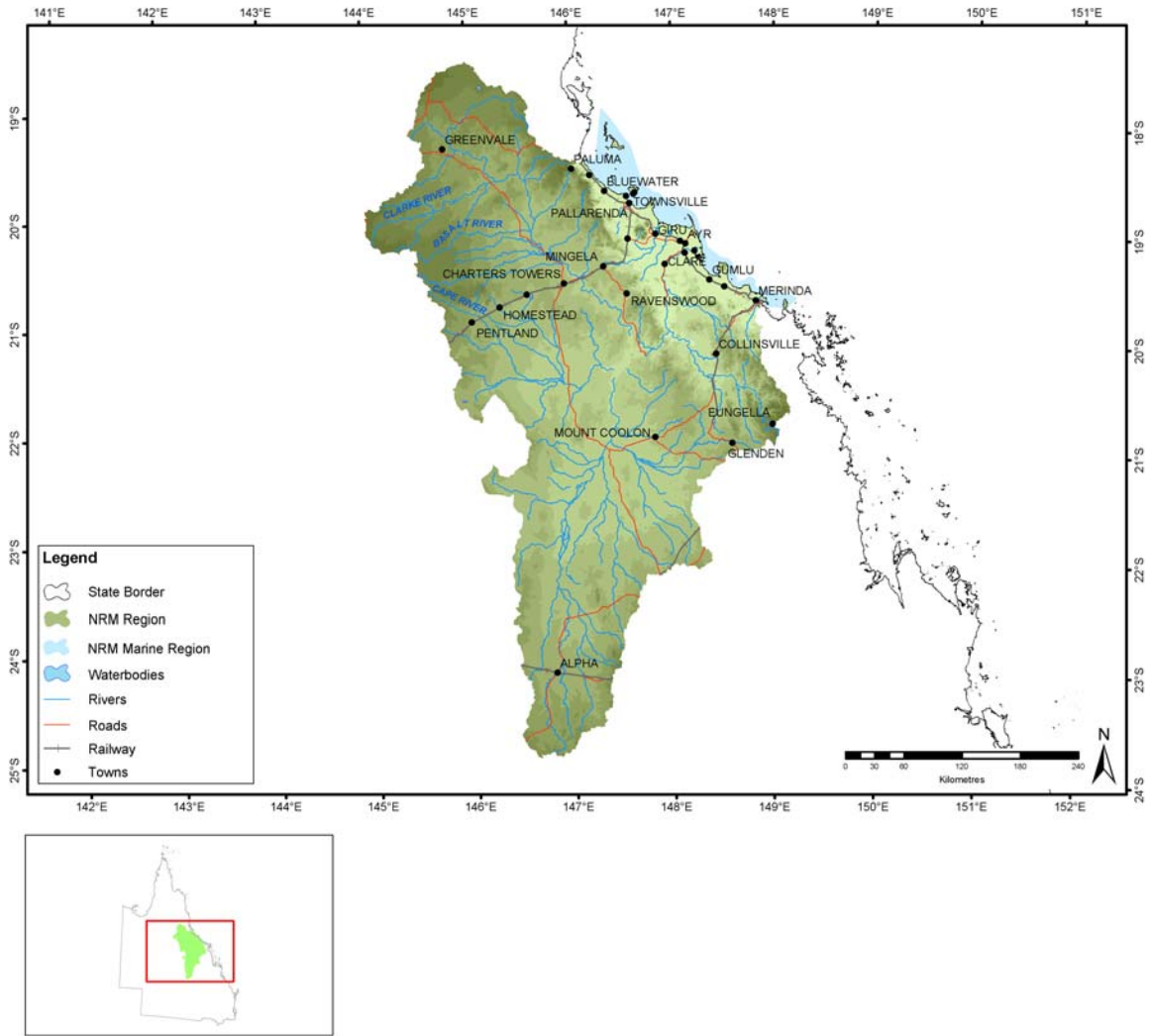
[Rivers and wetlands](#)

[Native vegetation](#)

[Turbidity in aquatic environments](#)

[Significant native species](#)

Administrative arrangements



Administrative Body: Burdekin Dry Tropics Board

Trust region: Burdekin

NAP region: Burdekin

Investment summary

This section provides an overall summary of approved investments and expenditure from the various investment streams.

Where applicable, it also details expenditure related to priority funding and regional investments based from accredited regional plans. For these investments, information is provided in relation to the matters for target addressed and the types of activities undertaken. Commencing this year in 2004-05, apart from in Table 1.1, Table 1.2 and Table 1.3, priority action funding and regional investments will be reported together.

Table 1.1 Reported expenditure for approved investments in Burdekin

Funding stream	Activity Expenditure (\$)			
	July 04 - June 05		Total to June 05	
	NAP	Trust	NAP	Trust
Foundation funding		171,000	685,461	171,000
Priority action	954,589	767,709	1,717,440	981,474
Regional investment	110,190	189,521	110,190	189,521
Total	1,064,779	1,128,230	2,513,091	1,341,995

Table 1.2 Major focus of reported expenditure in Burdekin

Matter for target	Activity Expenditure (\$)			
	July 04 - June 05		Total to June 05	
	NAP	Trust	NAP	Trust
Land Salinity	542,023	174,531	698,823	174,531
Soil Condition	20,226	57,500	20,226	57,500
Rivers and Wetlands	141,960	110,953	277,759	110,953
Turbidity in Aquatic Environments			342,899	
Native Vegetation	237,976	270,014	269,752	270,014
Significant Native Species		14,990		14,990
Other Supporting Activities	122,594	500,242	903,632	714,007
Total	1,064,779	1,128,230	2,513,091	1,341,995

Table 1.3 Types of activities in Burdekin

Activity Type	Activity Expenditure (\$)			
	July 04 - June 05		Total to June 05	
	NAP	Trust	NAP	Trust
Resource assessment	408,841		498,091	
Planning	17,127	171,000	1,141,064	171,000
Capacity building	476,625	533,773	617,110	747,538
On-ground activities	162,186	423,457	256,826	423,457
Total	1,064,779	1,128,230	2,513,091	1,341,995

Investment summary by matter for target

Investments supported by the NAP and the regional component of the Trust, undertaken by the region on a priority basis or through approved regional investment strategies are focussed on the matters for target.

This section provides a summary of the major focus of investments and the reported expenditure related to each of these matters for target. In some cases, investments have had a major focus on more than one matter for target and are not able to be attributed to a particular matter for target. Activities that have been classified as 'other supporting activities', have not been reported in this section.

Each summary for a matter for target describes the expenditure of the activities that contribute to the matter for target. It also provides a description of the outputs achieved through these activities to the 30 June 2005.

Where appropriate to regions with approved investment strategies, each summary also details the management action targets and resource condition targets related to each matter for target addressed through the NAP and the Trust by the region. Where a region has an accredited investment plan and approved investment summary, section three of this Regional Summary summarises the region's assessment of progress towards the achievement of these targets.

Land salinity

Table 2.1.1 Activities with a major focus on land salinity in Burdekin

Activities	Activity Expenditure (\$)			
	July 04 - June 05		Total to June 05	
	NAP	Trust	NAP	Trust
Addressing Dryland Salinity in the Belyando-Suttor Sub catchment of the Burdekin	133,182		200,732	
Engagement and Knowledge		174,531		174,531
Initiation of a Lower Burdekin Water Quality and Salinity Management Programme	408,841		498,091	
Total	542,023	174,531	698,823	174,531

Table 2.1.2 Summary of outputs from activities with a major focus on land salinity in Burdekin

Outputs	July 04 - June 05			Total to July 05		
	NAP	Trust	Joint	NAP	Trust	Joint
Resource assessment						
Baseline, trend or condition studies for targets						
Number of sites monitored	2			3		
Number of studies	3			3		
Decision support tools						
Number of models developed	3			3		
Investigations (survey, inventory and mapping and data analysis)						
Area (hectares) surveyed by salinity studies	1,000			1,000		
Area (hectares) surveyed by vegetation studies	85			120		
Number of salinity studies	8			16		
Number of vegetation studies	7			17		
Capacity building						
Awareness raising activities						
Number of field days	2			2		
Number of other non-training forums	5			15		
Number of other non-training products or materials developed	3			4		
Number of participants at field days in person-days	10			10		
Number of participants at other non-training forums in person-days	25			100		
Quantity distributed	1			1		
Facilitation motivation and support activities						
Number of FTE active community support positions (facilitators or coordinators)	2			4		
Skills and training activities						
Number of other key materials developed				1		
Number of participants at workshops in person-days	40			69		
Number of workshops held	3			4		
On-ground activities						
Riparian and waterway health						
Length (km) of stream opened up to fish passage	8			8		

Soil condition

Table 2.2.1 Activities with a major focus on soil condition in Burdekin

Activities	Activity Expenditure (\$)			
	July 04 - June 05		Total to June 05	
	NAP	Trust	NAP	Trust
Land, Soils and Agriculture	20,226		20,226	
Property level Rangeland grazing targets for the northern Brigalow belt		57,500		57,500
Total	20,226	57,500	20,226	57,500

Table 2.2.2 Summary of outputs from activities with a major focus on soil condition in Burdekin

Outputs	July 04 - June 05			Total to July 05		
	NAP	Trust	Joint	NAP	Trust	Joint
Resource assessment						
Baseline, trend or condition studies for targets						
Number of studies		0			0	
Capacity building						
Awareness raising activities						
Number of other non-training forums		2			3	
Number of participants at other non-training forums in person-days		7			13	
Facilitation motivation and support activities						
Number of community groups or community projects assisted		1			1	
Skills and training activities						
Number of other skills and training events held		4			4	
Number of participants at other skills and training events in person-days		130			130	

Rivers and wetlands

Table 2.3.1 Activities with a major focus on rivers and wetlands in Burdekin

Activities	Activity Expenditure (\$)			
	July 04 - June 05		Total to June 05	
	NAP	Trust	NAP	Trust
Development and Implementation of a community and Stakeholder NRM InfoBase and Community Involvement Process for the Burdekin Dry Tropics Region			41,159	
Integrated community education and involvement in total water cycle management (Creek to Coral Project 2)		30,000		30,000
Protection and restoration of degraded seasonal wetlands in Northern Australia		80,953		80,953
Whole of catchment Assessment and prioritisation of Wetlands and Waterways	141,960		236,600	
Total	141,960	110,953	277,759	110,953

Table 2.3.2 Summary of outputs from activities with a major focus on rivers and wetlands in Burdekin

Outputs	July 04 - June 05			Total to July 05		
	NAP	Trust	Joint	NAP	Trust	Joint
Resource assessment						
Baseline, trend or condition studies for targets						
Number of sites monitored	45	8		89	14	
Decision support tools						
Number of models developed	1			2		
Investigations (survey, inventory and mapping and data analysis)						
Area (hectares) surveyed by marine studies		3			3	
Area (hectares) surveyed by other studies		1,000			1,000	
Area (hectares) surveyed by species studies		1,000			1,000	
Area (hectares) surveyed by surface water / inland aquatic studies	13.34M			13.34M		
Number of marine studies		4			4	
Number of other studies		1			1	
Number of species studies		1			1	
Number of surface water / inland aquatic studies	2			3		
Capacity building						
Awareness raising activities						
Number of displays developed		14			17	
Number of newsletters developed		2			4	
Number of other non-training forums		39		8	45	
Number of participants at other non-training forums in person-days		730		200	730	
Number of websites developed	1	12		2	15	
Quantity distributed	18			35		
Quantity of newsletters distributed		2			2	
Facilitation motivation and support activities						
Number of FTE active community support positions (facilitators or coordinators)		1			1	
Skills and training activities						
Number of other key materials developed	4	5		6	5	
Number of participants at workshops in person-days	15	110		15	110	
Number of workshops held	1	5		1	10	

Outputs	July 04 - June 05			Total to July 05		
	NAP	Trust	Joint	NAP	Trust	Joint
Quantity of other key materials distributed	1	2		41	2	
On-ground activities						
Wetlands health protected or enhanced						
Area (hectares) of wetland protected		6			12	

Turbidity in aquatic environments

Table 2.4.1 Activities with a major focus on turbidity in aquatic environments in Burdekin

Activities	Activity Expenditure (\$)			
	July 04 - June 05		Total to June 05	
	NAP	Trust	NAP	Trust
Improving Water Quality through Land Management changes in the Bowen - Broken River catchment: A Framework for Action			342,899	
Total			342,899	

Table 2.4.2 Summary of outputs from activities with a major focus on turbidity in aquatic environments in Burdekin

Outputs	July 04 - June 05			Total to July 05		
	NAP	Trust	Joint	NAP	Trust	Joint
Resource assessment						
Baseline, trend or condition studies for targets						
Number of sites monitored	9			30		
Number of studies	2			3		
Decision support tools						
Number of other decision support tools developed	1			2		
Investigations (survey, inventory and mapping and data analysis)						
Area (hectares) surveyed by other studies	46,000			46,000		
Area (hectares) surveyed by surface water / inland aquatic studies	23,000			23,000		
Number of other studies	2			2		
Number of surface water / inland aquatic studies	1			1		
Capacity building						
Facilitation motivation and support activities						
Number of community groups or community projects assisted	4			8		
Number of FTE active community support positions (facilitators or coordinators)				1		
Skills and training activities						
Number of other key materials developed	2			2		
Number of participants at workshops in person-days	24			38		
Number of workshops held	6			11		
Quantity of other key materials distributed	2			2		
On-ground activities						
Conservation by agreements						
Area (hectares) of voluntary conservation agreements covered	23,500			47,000		
Number of voluntary conservation agreements	4			8		

Table 2.5.1 Activities with a major focus on native vegetation in Burdekin

Activities	Activity Expenditure (\$)			
	July 04 - June 05		Total to June 05	
	NAP	Trust	NAP	Trust
Engaging Aboriginal Traditional Owner Participation in NAPSWQ in the Burdekin Dry Tropics	237,976		269,752	
Maintaining the momentum		270,014		270,014
Total	237,976	270,014	269,752	270,014

Table 2.5.2 Summary of outputs from activities with a major focus on native vegetation in Burdekin

Outputs	July 04 - June 05			Total to July 05		
	NAP	Trust	Joint	NAP	Trust	Joint
Resource assessment						
Decision support tools						
Number of information management systems developed	2			3		
Investigations (survey, inventory and mapping and data analysis)						
Area (hectares) surveyed by social studies	13.34M			13.34M		
Number of social studies	1			1		
Capacity building						
Awareness raising activities						
Number of other non-training forums		4		5	4	
Number of other non-training products or materials developed				1		
Number of participants at other non-training forums in person-days		40			40	
Number of websites developed				1		
Quantity distributed				25		
Facilitation motivation and support activities						
Number of community groups or community projects assisted	1	41		1	79	
Number of FTE active community support positions (facilitators or coordinators)		1			1	
Skills and training activities						
Number of participants at training sessions in person-days	40	80		40	160	
Number of participants at workshops in person-days	45			93		
Number of training sessions held	1	8		1	16	
Number of workshops held	1			17		

Significant native species

Table 2.6.1 Activities with a major focus on significant native species in Burdekin

Activities	Activity Expenditure (\$)			
	July 04 - June 05		Total to June 05	
	NAP	Trust	NAP	Trust
Biodiversity		14,990		14,990
Total		14,990		14,990