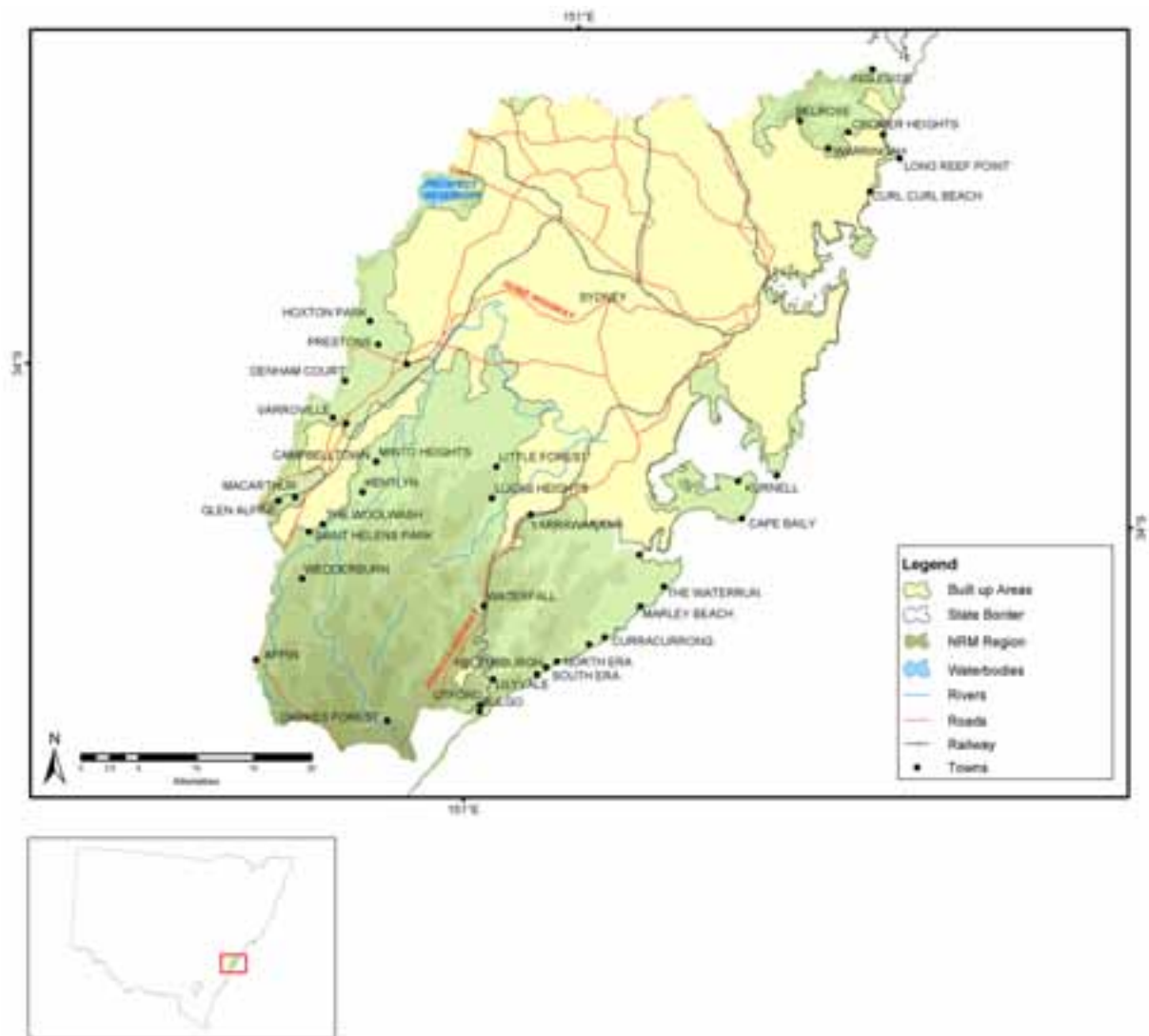


A2.12 SYDNEY METRO



Administrative arrangements

Administrative Body: Sydney Metro Catchment Management Authority

Trust region: Sydney Metro

NAP region: Not applicable

Investment summary

Table A2.12.1 Joint Government approved investments for Sydney Metro

Funding stream	2003-04 Approvals (\$)		Total Approvals to June 2004 (\$)	
	NAP	Trust	NAP	Trust
Priority action				451,900
Regional investment		600,000		600,000
Total		600,000		1,051,900

* Figures reflect Australian Government and State/Territory Government approvals for NAP and only Australian Government approvals for the Trust. State/Territory Government cash and in-kind funding for the Trust is not included.

Table A2.12.2 Reported expenditure for approved investments in Sydney Metro

Funding stream	Budgeted Activity Expenditure (\$)				Reported Activity Expenditure (\$)			
	July 03 - March 04		Total to March 04		July 03 - March 04		Total to March 04	
	NAP	Trust	NAP	Trust	NAP	Trust	NAP	Trust
Priority action		76,575		76,575				
Regional investment		209,190		209,190				
Total		285,765		285,765				

Priority action investments

Expenditure

Table A2.12.3 Priority action funding having a major focus on matters for target in Sydney Metro

Matter for target	Budgeted Activity Expenditure (\$)				Reported Activity Expenditure (\$)			
	July 03 - March 04		Total to March 04		July 03 - March 04		Total to March 04	
	NAP	Trust	NAP	Trust	NAP	Trust	NAP	Trust
Rivers and wetlands		38,400		38,400				
Native vegetation		38,175		38,175				
Total		76,575		76,575				

Table A2.12.4 Priority action funding for types of activities in Sydney Metro

Activity Type	Budgeted Activity Expenditure (\$)			
	July 03 - March 04		Total to March 04	
	NAP	Trust	NAP	Trust
Resource assessment		15,500		15,500
Resource assessment		24,190		24,190
Planning		61,075		61,075
Capacity building		185,000		185,000
Total		285,765		285,765

Table A2.12.5 Priority action activities in Sydney Metro

Matter for target	Activities	Budgeted Activity Expenditure (\$)				Reported Activity Expenditure (\$)			
		July 03 - March 04		Total to March 04		July 03 - March 04		Total to March 04	
		NAP	Trust	NAP	Trust	NAP	Trust	NAP	Trust
Rivers and wetlands	Reviewing and Restoring Fish Passage in Urbanised Waterways, Southern Sydney Catchment Management Board		38,400		38,400				
Native vegetation	Sustainable Native Vegetation Management for Urban Development in the Sydney Harbour Catchment		22,675		22,675				
	Sydney Harbour Catchment Vegetation Mapping		15,500		15,500				
Total			76,575		76,575				

Regional investment summary

Plan accredited by Ministers: March 2004

Investment strategy approved by Ministers: February 2004

Expenditure

Table A2.12.7 Regional investment funding having a major focus on matters for target in Sydney Metro

Matter for target	Budgeted Activity Expenditure (\$)				Reported Activity Expenditure (\$)			
	July 03 - March 04		Total to March 04		July 03 - March 04		Total to March 04	
	NAP	Trust	NAP	Trust	NAP	Trust	NAP	Trust
Rivers and wetlands		24,190		24,190				
Other supporting activities		185,000		185,000				
Total		209,190		209,190				

Table A2.12.8 Regional investment funding for types of activities in Sydney Metro

Activity Type	Budgeted Activity Expenditure (\$)				Reported Activity Expenditure (\$)			
	July 03 - March 04		Total to March 04		July 03 - March 04		Total to March 04	
	NAP	Trust	NAP	Trust	NAP	Trust	NAP	Trust
Resource assessment		24,190		24,190				
Capacity building		185,000		185,000				
Total		209,190		209,190				

Activities and achievements

Table A2.12.9 Regional investment activities in Sydney Metro

Matter for target	Activities	Budgeted Activity Expenditure (\$)				Reported Activity Expenditure (\$)			
		July 03 - March 04		Total to March 04		July 03 - March 04		Total to March 04	
		NAP	Trust	NAP	Trust	NAP	Trust	NAP	Trust
Rivers and wetlands	Sydney Harbour Riverine Corridor Ecology		24,190		24,190				
Other supporting activities	Community Support		185,000		185,000				
Total			209,190		209,190				

Targets for Sydney Metro

Resource condition targets

Table A2.12.10 Resource condition targets related to regional investment in Sydney Metro

Matter for Target	Resource condition target
Soil condition	By 2012, land areas are used within their capability to ensure the natural resources of the land are protected or enhanced
Nutrients in aquatic environments	By 2003, achieve water quality consistent with the ANZECC guidelines for recreational uses and protection of the aquatic ecosystem and to ensure that aquatic ecosystems are used within their capabilities
Significant native species	By 2012, the full range of described ecological communities, species and populations are preserved within protected areas within the Board area and managed for long term viability
	By 2012, there is a measurable improvement of biodiversity and habitat values in terrestrial and aquatic habitats on private and public areas
	By 2012, all areas of natural heritage within the Board area that are currently publicly owned or controlled are protected and managed to maintain or improve their biodiversity and habitat values.
	From 2003, the "no net loss principle" is applied to all decisions affecting aquatic and terrestrial ecosystems, habitats and species within the Board area
Estuarine, coastal and marine	By 2012, achieve river flow objectives as identified in the EPA Water Quality and River Flow Interim Environmental Objectives for Sydney Harbour and Parramatta River Catchments
Other supporting activities	By 2013, catchment management plans and programs give consideration and support to the cultural values and needs of the indigenous and other cultural groups in the Board area
	By 2013, achieve a coordinating, representative and participative integrated system including the capacity to oversight the implementation of the provisions of the Blueprint
	By 2013, achieve a coordinating, representative and participative integrated system including the capacity to integrate information and research systems
	By 2013, all environmental planning instruments, strategies and management plans for the Board area are consistent with the Blueprint
	By 2012, the value of cultural heritage in the Board area is reflected by increased community awareness and participation
	By 2012, there is a significant return by the local indigenous communities for 'doing business' around the Sydney Harbour Catchment

Management action targets

Table A2.12.11 Management action targets related to regional investment in Sydney Metro

Matter for Target	Management action target
Soil condition	By 2010 all high hazard areas support land uses that are within their capability. These will focus on acid sulphate soils, soil salinity, bushfire risk, contaminated land, mass movement, tidal inundation and coastal hazards
	By 2013, cumulative impacts result in no further degradation across the Board area
	By 2012, identify areas of biologically active native topsoils in the Board area and develop and implement strategies for no net loss
Rivers and wetlands	By 2006, programs and planning are in place to ensure a measurable net annual increase in adequate buffer/ riparian areas along waterways, watercourses and wetlands (including seagrasses, saltmarsh and mangroves)
	By 2013, implement environmental flows and sustainable water sharing for all surface and groundwater systems including wetlands and areas subject to mining
	By 2012, management strategies for maximising natural values for all watercourses have been developed and are being implemented
	By 2005, achieve no net loss of natural water courses which is consistent with the NSW State Rivers and Estuary Policy
Turbidity in aquatic environments	By 2006, achieve control and mitigation of sediment input into aquatic systems throughout the Board area
	By 2006, minimisation of sediment load from the catchment through active erosion and sediment control strategies
Native vegetation	By 2006, all land managers are preferentially using plant species indigenous to the locality
Significant native species	By 2006, planning and development result in a net increase in biodiversity values across the Board area
	By 2013, achieve a measurable net increase in the ability of priority species to move within the catchment and between catchments
Significant invasive species	By 2013, the threats posed to aquatic and terrestrial ecosystems by pest species are measurably reduced
Estuarine, coastal and marine	By 2013, management strategies for maximising biodiversity and habitat values for all watercourses have been developed and are being implemented
	By 2013, incorporation of comprehensive, adequate and representative areas of all aquatic and terrestrial ecological communities into areas managed for conservation
	By 2006, planning instruments should incorporate the implementation of vegetated buffer areas for all waterways and wetlands (such as seagrasses, salt marshes and mangroves)
	Water quality meets ANZECC guidelines for recreational water quality and protection of ecosystems: a) by 2006 for lower parts of the Sydney Harbour catchment
	By 2012, all waterways, estuaries and coastal lakes in the Board area are managed
	By 2007, water quality meets the ANZECC guidelines for recreational water quality or protection of ecosystems of Cooks River, Georges River and Eastern Beaches and tributaries
	By 2006, identify areas and practices for conservation and enhancement of habitat values in non-natural areas across the entire Board area
	By 2013, increase the length of uninterrupted river available to native fish by 25%
	By 2006, identify and protect all existing aquatic and terrestrial habitats of high conservation value
	By 2013, plans are developed and implemented for the rehabilitation of all priority degraded ecosystems and sites

Matter for Target	Management action target
Other supporting activities	From 2003, the no net loss principle should be applied to all developments in respect to: a) biodiversity and habitat extent and quality; b) ecological connectivity; c) water quality; and, d) environmental flows
	By 2012, environmental planning instruments, codes of practice and other strategies and/or guidelines have been developed and are being implemented
	By 2004, monitoring and reporting mechanisms are developed at an appropriate scale so that the performance of all spheres of government/all of community approaches to NREM can be assessed
	By 2004, establish and maintain an on-line integrated information network delivering publicly accessible bibliographic, thematic representations and data related to the Board area
	From 2003, achieve early community participation in the development and planning process
	By 2006, State Government agencies and local government incorporate Aboriginal cultural values ('spirit of place') in developing and implementing all plans and strategies in the Board area
	By 2006, develop and implement a coordinated approach to funding for research and on-ground works
	By 2006, all 25 local government SoE reports have standardised performance indicators and data collection processes
	From 2003, support, encourage and facilitate community groups in remediation, study and management of natural areas
	By 2006, appropriate education programs are developed, implemented and are being assessed for effectiveness in the Board area
	By 2006, the ways in which governments and the community work together will be improved to ensure that strategic targets can be met
	By 2012, all major factors having a negative impact on biodiversity values have been identified and remediation strategies have been developed
	From 2003, all policies, strategies and plans impacting on NRM are to be consistent with the Catchment Blueprint at the time of their development or review
	By 2004, cultural and heritage issues and values relating to NRM are incorporated in plans, strategies and policies in the Board area at time of development or review