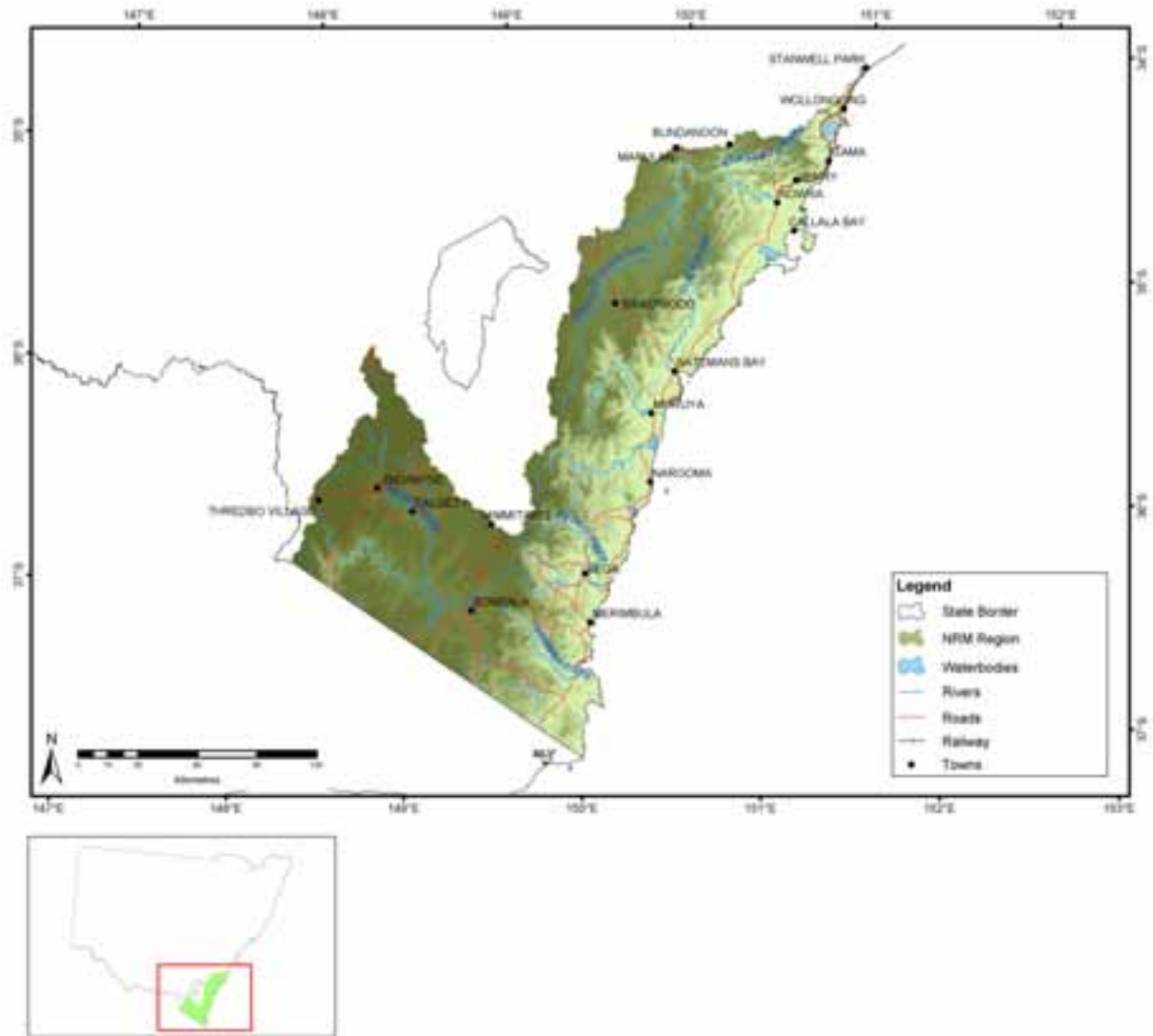


A2.11 SOUTHERN RIVERS

364



Administrative arrangements

Administrative Body: Southern Rivers Catchment Management Authority Group

Trust region: Southern Rivers

NAP region: Not applicable

Investment summary

Table A2.11.1 Joint Government approved investments for Southern Rivers*

Funding stream	2003-04 Approvals (\$)		Total Approvals to June 2004 (\$)	
	NAP	Trust	NAP	Trust
Priority action				2,378,573
Regional investment		1,500,000		1,500,000
Total		1,500,000		3,878,573

* Figures reflect Australian Government and State/Territory Government approvals for NAP and only Australian Government approvals for the Trust. State/Territory Government cash and in-kind funding for the Trust is not included.

Table A2.11.2 Reported expenditure for approved investments in Southern Rivers

Funding stream	Budgeted Activity Expenditure (\$)				Reported Activity Expenditure (\$)			
	July 03 - March 04		Total to March 04		July 03 - March 04		Total to March 04	
	NAP	Trust	NAP	Trust	NAP	Trust	NAP	Trust
Priority action		402,507		402,507		201,204		201,204
Regional investment		1,125,000		1,125,000				
Total		1,527,507		1,527,507		201,204		201,204

Priority action investments

Expenditure

Table A2.11.3 Priority action funding having a major focus on matters for target in Southern Rivers

Matter for target	Budgeted Activity Expenditure (\$)				Reported Activity Expenditure (\$)			
	July 03 - March 04		Total to March 04		July 03 - March 04		Total to March 04	
	NAP	Trust	NAP	Trust	NAP	Trust	NAP	Trust
Rivers and wetlands		14,625		14,625		50,781		50,781
Turbidity in aquatic environments		79,450		79,450		6,247		6,247
Native vegetation		166,425		166,425		137,865		137,865
Significant native species		142,007		142,007		6,311		6,311
Total		402,507		402,507		201,204		201,204

Table A2.11.4 Priority action funding for types of activities in Southern Rivers

Activity Type	Budgeted Activity Expenditure (\$)				Reported Activity Expenditure (\$)			
	July 03 - March 04		Total to March 04		July 03 - March 04		Total to March 04	
	NAP	Trust	NAP	Trust	NAP	Trust	NAP	Trust
Capacity building		387,882		387,882		150,423		150,423
On-ground activities		14,625		14,625		50,781		50,781
Total		402,507		402,507		201,204		201,204

Table A2.11.5 Priority action activities in Southern Rivers

Matter for target	Activities	Budgeted Activity Expenditure (\$)				Reported Activity Expenditure (\$)			
		July 03 - March 04		Total to March 04		July 03 - March 04		Total to March 04	
		NAP	Trust	NAP	Trust	NAP	Trust	NAP	Trust
Rivers and wetlands	South East Integrated River and Wetland Protection and Rehabilitation Program		14,625		14,625		50,781		50,781
Turbidity in aquatic environments	Southern Riparian Partnership Project		79,450		79,450		6,247		6,247
Native vegetation	Implementation of a Comprehensive Voluntary Biodiversity Conservation Scheme for South East NSW		166,425		166,425		137,865		137,865
Significant native species	Protecting Biodiversity in the Southern Catchment		142,007		142,007		6,311		6,311
Total			402,507		402,507		201,204		201,204

Achievements

Table A2.11.6 Outputs related to priority actions having a major focus on matters for target in Southern Rivers

Standard output	Land salinity		Soil condition		Rivers and wetlands		Nutrients in aquatic environments		Turbidity in aquatic environments		Surface water salinity		Native vegetation		Significant native species		Significant invasive species		Estuarine, coastal and marine		Other supporting activities	
	03-04	Total	03-04	Total	03-04	Total	03-04	Total	03-04	Total	03-04	Total	03-04	Total	03-04	Total	03-04	Total	03-04	Total	03-04	Total
Resource assessment																						
Decision support tools																						
Number of information management systems developed					2	2																
Investigations (survey, inventory and mapping and data analysis)																						
Number of vegetation studies													8	8								
Number of species studies													2	2	4	4						
Number of surface water / inland aquatic studies								6	6													
Number of social studies													10	10								
Number of other studies													2	2								
Capacity building																						
Awareness raising activities																						
Number of demonstrations					8	8		4	4				12	12								
Number of field days					16	16		6	6				20	20								
Number of other non-training products or materials developed													140	140								
Number of media opportunities													24	24								
Facilitation motivation and support activities																						
Number of FTE active community support positions (facilitators or coordinators)								2	2													
Skills and training activities																						
Number of training sessions held					4	4		6	6						4	4						
Number of participants at training sessions in person-days															600	600						
On-ground activities																						
Conservation by agreements																						
Number of legal conservation covenants and other legal agreements													620	620								
Number of voluntary conservation agreements													80	80	300	300						
Revegetation with indigenous vegetation																						
Area (hectares) planted to riparian indigenous species					34	34																
Riparian and waterway health																						
Length (km) of stream bank stabilised					34	34																
Number of off-river stock watering points established					8	8																

Management of significant species or ecological communities													
Area (hectares) of habitat management												120	120
Number of seedbanks managed												2	2
Weight (kg) of seeds collected												150	150
Significant pest plant control													
Area (hectares) of pest plant control												194	194
Area (hectares) of fox control												600	600

Regional investment summary

Plan accredited by Ministers: January 2004

Investment strategy approved by Ministers: February 2004

Expenditure

Table A2.11.7 Regional investment funding having a major focus on matters for target in Southern Rivers

Matter for target	Budgeted Activity Expenditure (\$)				Reported Activity Expenditure (\$)			
	July 03 - March 04		Total to March 04		July 03 - March 04		Total to March 04	
	NAP	Trust	NAP	Trust	NAP	Trust	NAP	Trust
Soil condition		65,000		65,000				
Rivers and wetlands		150,000		150,000				
Nutrients in aquatic environments		40,000		40,000				
Turbidity in aquatic environments		40,000		40,000				
Native vegetation		84,000		84,000				
Significant native species		95,000		95,000				
Significant invasive species		171,000		171,000				
Estuarine, coastal and marine		30,000		30,000				
Other supporting activities		450,000		450,000				
Total		1,125,000		1,125,000				

Table A2.11.8 Regional investment funding for types of activities in Southern Rivers

Activity Type	Budgeted Activity Expenditure (\$)				Reported Activity Expenditure (\$)			
	July 03 - March 04		Total to March 04		July 03 - March 04		Total to March 04	
	NAP	Trust	NAP	Trust	NAP	Trust	NAP	Trust
Resource assessment		40,000		40,000				
Capacity building		599,000		599,000				
On-ground activities		486,000		486,000				
Total		1,125,000		1,125,000				

Activities and achievements

Table A2.11.9 Regional investment activities in Southern Rivers

Matter for target	Activities	Budgeted Activity Expenditure (\$)				Reported Activity Expenditure (\$)			
		July 03 - March 04		Total to March 04		July 03 - March 04		Total to March 04	
		NAP	Trust	NAP	Trust	NAP	Trust	NAP	Trust
Soil condition	Reduction of Acid Sulphate Discharge into the Shoalhaven/ Crookhaven Estuaries		65,000		65,000				
Rivers and wetlands	Bombala River Rehabilitation		20,000		20,000				
	Mataganah Community River Rehabilitation Project		30,000		30,000				
	Riparian Investment Priority Mapping Stage 1		40,000		40,000				
	Stream and Wetland Management (Wetlands Component)		60,000		60,000				
Nutrients in aquatic environments	Sustainable Dairy Partnership		40,000		40,000				
Turbidity in aquatic environments	Bega River Catchment Rehabilitation & Sediment Management Program		40,000		40,000				
Native vegetation	Community Seed Bank Extension Support Package		11,000		11,000				
	Eurobodalla Community Support Officer		53,000		53,000				
	Revegetating the Braidwood Granites		20,000		20,000				
Significant native species	Eurobodalla Biodiversity Incentives Officer		13,000		13,000				
	Implement Recovery Actions for Threatened Species		20,000		20,000				
	Monaro Grasslands Biodiversity Conservation Strategy		35,000		35,000				
	Snowy Interstate Community Support Officer		27,000		27,000				

Matter for target	Activities	Budgeted Activity Expenditure (\$)				Reported Activity Expenditure (\$)			
		July 03 - March 04		Total to March 04		July 03 - March 04		Total to March 04	
		NAP	Trust	NAP	Trust	NAP	Trust	NAP	Trust
Significant invasive species	Coordinated Vertebrate Pest Control Program for Eden sub-region		10,000		10,000				
	Illawarra and Shoalhaven Coastal Land Restoration		75,000		75,000				
	Kangaroo River and Broughton Creek Privet Reduction Program		26,000		26,000				
	Snowy River Recovery Program		60,000		60,000				
Estuarine, coastal and marine	Coast/Estuary Priority Action Implementation		30,000		30,000				
Other supporting activities	Building Community for Sustainable NRM Partnerships Package		279,000		279,000				
	Enhancing Koori Capacity in the South East		40,000		40,000				
	Far South Coast Community Support Officer		53,000		53,000				
	Illawarra Regional Cultural Environment		15,000		15,000				
	Targeted Awareness Program to Bridge Gaps in Community Capacity		10,000		10,000				
	Upper Snowy Community Support Officer		53,000		53,000				
Total			1,125,000		1,125,000				

Targets for Southern Rivers

Resource condition targets

Table A2.11.10 Resource condition targets related to regional investment in Southern Rivers

Matter for Target	Resource condition target
Soil condition	By 2012, the rate of soil loss across the South East region will be reduced by 10% and the health of the soil resource will be maintained at current levels or enhanced
Rivers and wetlands	By November 2012, each priority stream within the Southern Catchment will meet river flow objectives and water quality objectives for at least 80% of the time
	By 2012, river flow objectives will be met in the 24 priority catchments and the health indicators (including water quality) in priority rivers; coastal areas and estuaries will be improved by a minimum of 10%
Native vegetation	By 2012, protect, connect, enhance and manage for biodiversity conservation, a minimum of 30% of the original distribution of each native vegetation community type of the Catchment
Significant native species	By 2012, through voluntary participation, the area of private land managed to conserve vulnerable ecosystems presently under-represented in the formal reserve system will increase
	By 2012 a mix of incentives, regulations and extension programs will be in place to achieve the biophysical targets of the Blueprint for the priority natural resource management areas
Significant invasive species	By 2012, the area of land affected by land degradation problems including weed infestations, will not exceed the 2003 baseline
Estuarine, coastal and marine	By 2011, the condition of coasts, lakes, wetlands and estuaries in the Southern Catchment will be maintained or improved from current classifications as assigned by the National Land and Water Resources Audit and the NSW Comprehensive Coastal Assessment

Management action targets

Table A2.11.11 Management action targets related to regional investment in Southern Rivers

Matter for Target	Management action target
Soil condition	By 2012, 80km extreme/serious gully erosion and 60km minor/moderate priority erosion will be rehabilitated and stabilised using proven soil conservation techniques
	By 2012, a sustainable soils strategy will have been developed and implemented that aims to enhance soil quality
	By 2012, the baseline for soil acidity will be established and maintained at year 2001 levels
	By 2006, prepare an alpine erosion rehabilitation plan, identifying priority areas
	By 2012, control and remediate all exposed acid sulphate soils
	By 2012, there will be a reduction in the area of moderately to severely degraded land
Rivers and wetlands	By 2012, all wetlands in the South East region are mapped and rapid assessment of current status and management priorities are completed; and the 25 top priority wetlands will be fenced and managed
	By 2007, water sharing plans for Kangaroo River, Shoalhaven River Scheme, Minnamurra River and Broughton Mill Creek will be completed in accordance with the Water Management Act 2000 and the Interim River Flow Objectives
	By 2012, the length/area of riverine corridors and wetlands protected and/or rehabilitated will increase
	By 2012, 80% of actions are implemented from existing flood plain management plans
	By 2012, water quality in all waterways will meet ANZECC 2000 guidelines for the main environmental values for at least 80% of the time
Nutrients in aquatic environments	By 2006, best management practice implemented for stormwater and sewage management and best management achieved greater than 90% of the time
	By 2012, primary faecal coliform inputs to priority rivers and lakes will be reduced by at least 40%
Turbidity in aquatic environments	By 2012, primary sediment inputs to priority rivers and streams from roads, tracks and laneways will be reduced by at least 50%

Matter for Target	Management action target
Native vegetation	By 2012, the vegetation communities with greater than 30% of their original distribution remaining will have at least 30% of the area of original distribution managed for conservation
	By 2012, the vegetation communities with less than 30% of their original distribution remaining will be actively managed via conservation and restoration activities to achieve the 30% target
	By 2012, increase connectivity by 10% and reduce fragmentation of priority vegetation community types in targeted areas
Significant native species	By 2002, there will be no deterioration in the status (as at 2001) of listed endangered, vulnerable and potentially threatened species and communities
	Identify and conserve high and medium conservation value ecological communities by establishing and funding biodiversity conservation schemes commencing in Eden region by 2002, 'Snowy/Monaro' region by 2004 and 'Eurobodalla' region by 2004
	By 2012, areas of high conservation value will be managed for conservation and priority actions for threatened species recovery plans will be implemented
Significant invasive species	By 2005, collaborative programs will be in place to manage targeted pest species
	By 2005, the following pest animals levels will be reduced in accordance with the management plans of the regulatory authority
	By 2012, the area of public and private land and waters (within specified sub regions) infested with following high priority weeds will not exceed year 2000 levels
	By 2005, a process will be in place to maintain the weed and pest-free status of all areas that are free of pests and weeds. This will include community education, information sharing and coordination of land managers
	By 2005, a regional weed control strategy will be prepared and implemented for priority weeds
Estuarine, coastal and marine	By 2012, high conservation value marine areas shall be protected or managed to conserve their aquatic biodiversity
	By 2012, coastal zone management plans will be developed for all priority estuarine and coastal environments
	By 2012, the number of river rehabilitation plans that complement water sharing arrangements will be 24 and the number of river rehabilitation plans for other priority rivers and estuaries will be eight
	By 2003, coastal management committees will be established for Eurobodalla and Bega Valley Shires to determine priorities for coastal management plans
	By 2005, management plans will be in place for the rehabilitation and ongoing protection of the Clyde River and other high conservation rivers, estuaries, lakes and lagoons as assessed by Water Management Committees and Coastal Management Committees
	By 2012, the number of high priority rivers with formalised and implemented water sharing arrangements will be 24. Priorities will be determined in consultation with Water Management Committees
	By 2012, the nine estuary management plans currently being developed or implemented will have been audited to ensure their implementation is complete and their revision is being undertaken
	From 2002, the development of all coastal zone management plans shall involve participation of Aboriginal communities and reflect local Aboriginal community values and interests
	From 2002, implement the priority actions of coastal zone management plans and other on-ground works that protect and rehabilitate coastal and estuarine environments
	By 2004, a baseline monitoring system will be established to determine the health of marine ecosystems, coastal lakes, wetlands and estuaries
Other supporting activities	Develop a package of the most effective combination of incentives, regulation and extension programs to achieve catchment targets in the face of rural adjustment and demographic change
	By 2012, the unit of water consumption will have reduced below 2002 levels
	By 2012, groundwater management plans will be in place for three high use aquifer systems
	By 2003 sustainable resourcing of community support and capacity building will be achieved in accordance with the regional Landcare and community support strategy.
	By 2012, identify all Crown lands (using the Crown land assessment process) with significant biodiversity values and implement appropriate reservation and management actions
	By 2008, strategies for sustainable resource use will be developed. This includes settlement strategies for all coastal areas to be developed in accordance with draft Coastal Settlement Strategy and settlement strategies for all non-coastal areas
	By 2005, there will be greater use of mechanisms such as statements of commitment, memorandums of understanding, and regional and local agreements between local councils, state government agencies, regional organisations and Aboriginal communities