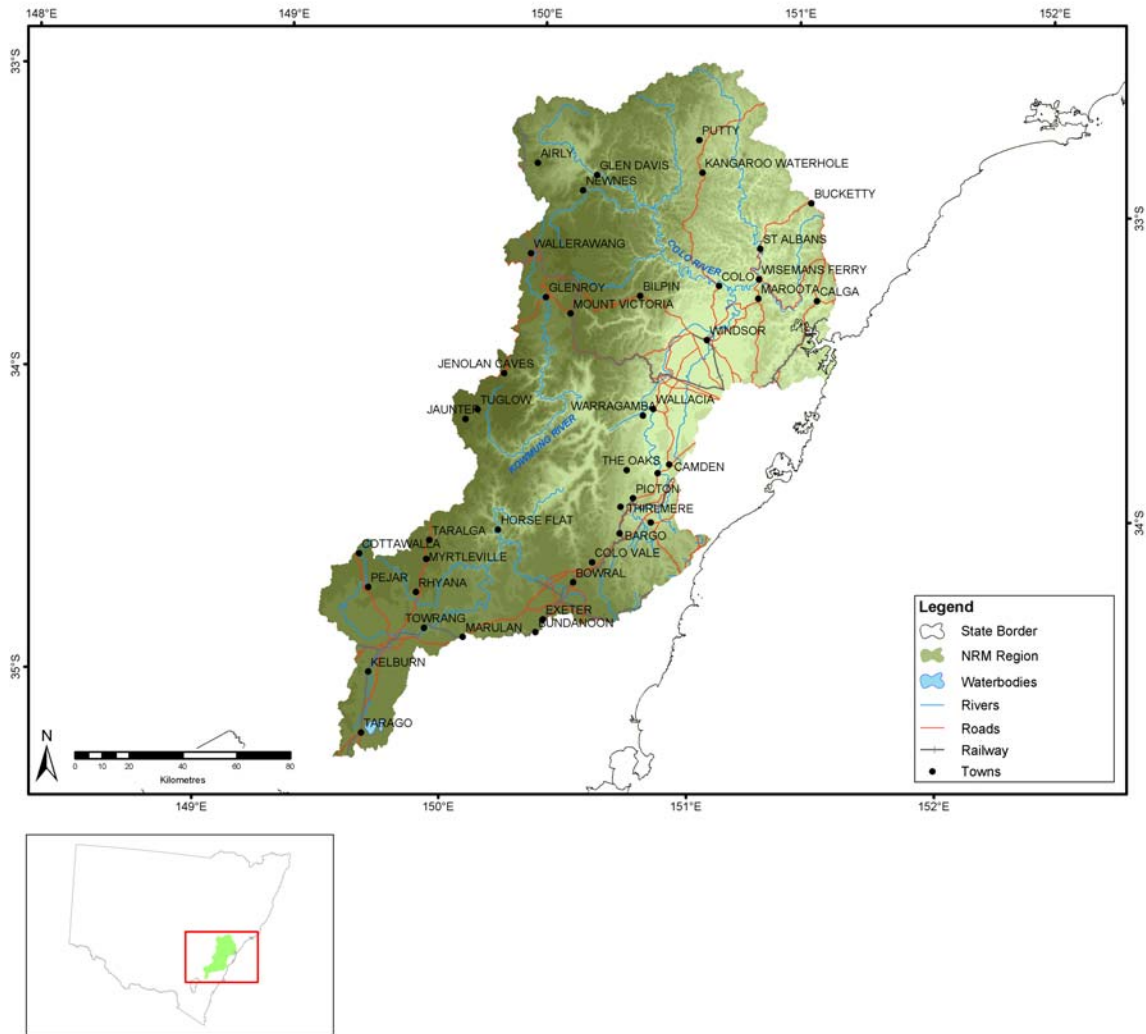


## A2.3 HAWKESBURY



### Administrative arrangements

Administrative Body: Hawkesbury Nepean Catchment Management Authority

Trust region: Hawkesbury Nepean

NAP region: Not applicable

## Investment summary

**Table A2.3.1** Joint Government approved investments for Hawkesbury Nepean\*

Funding stream	2003-04 Approvals (\$)		Total Approvals to June 2004 (\$)	
	NAP	Trust	NAP	Trust
Priority action				2,378,165
Regional investment		1,900,000		1,900,000
Total		1,900,000		4,278,165

\* Figures reflect Australian Government and State/Territory Government approvals for NAP and only Australian Government approvals for the Trust. State/Territory Government cash and in-kind funding for the Trust is not included.

**Table A2.3.2** Reported expenditure for approved investments in Hawkesbury Nepean

Funding stream	Budgeted Activity Expenditure (\$)				Reported Activity Expenditure (\$)			
	July 03 - March 04		Total to March 04		July 03 - March 04		Total to March 04	
	NAP	Trust	NAP	Trust	NAP	Trust	NAP	Trust
Priority action		1,482,200		1,482,200		392,401		392,401
Regional investment		261,487		261,487				
Total		1,743,687		1,743,687		392,401		392,401

## Priority action investments

### Expenditure

**Table A2.3.3** Priority action funding having a major focus on matters for target in Hawkesbury Nepean

Matter for target	Budgeted Activity Expenditure (\$)				Reported Activity Expenditure (\$)			
	July 03 - March 04		Total to March 04		July 03 - March 04		Total to March 04	
	NAP	Trust	NAP	Trust	NAP	Trust	NAP	Trust
Land salinity		37,500		37,500				
Soil condition		60,000		60,000		41,250		41,250
Rivers and wetlands		455,250		455,250		277,888		277,888
Native vegetation		266,250		266,250		47,263		47,263
Significant native species		226,700		226,700				
Significant invasive species		428,500		428,500		26,000		26,000
Estuarine, coastal and marine		8,000		8,000				
Total		1,482,200		1,482,200		392,401		392,401

**Table A2.3.4** Priority action funding for types of activities in Hawkesbury Nepean

Activity Type	Budgeted Activity Expenditure (\$)				Reported Activity Expenditure (\$)			
	July 03 - March 04		Total to March 04		July 03 - March 04		Total to March 04	
	NAP	Trust	NAP	Trust	NAP	Trust	NAP	Trust
Resource assessment		135,000		135,000		25,000		25,000
Planning		37,500		37,500				
Capacity building		60,500		60,500		41,250		41,250
On-ground activities		1,249,200		1,249,200		326,151		326,151
Total		1,482,200		1,482,200		392,401		392,401

**Table A2.3.5** Priority action activities in Hawkesbury Nepean

Matter for target	Activities	Budgeted Activity Expenditure (\$)				Reported Activity Expenditure (\$)			
		July 03 - March 04		Total to March 04		July 03 - March 04		Total to March 04	
		NAP	Trust	NAP	Trust	NAP	Trust	NAP	Trust
Land salinity	Hawkesbury Lower Nepean Salinity Investigations and Management Options 2		37,500		37,500				
Soil condition	Best Practice Grazing Management for Agriculture, Biodiversity and Water Quality in the Warragamba Catchment		60,000		60,000	41,250			41,250
Rivers and wetlands	Warragamba Catchment Riparian Biodiversity Protection and Enhancement		430,250		430,250	252,888			252,888
	WISE Rivers and Wetlands Information System for the Hawkesbury Lower Nepean Catchment		25,000		25,000	25,000			25,000
Native vegetation	Protection and Enhancement of Terrestrial Biodiversity in the Warragamba Catchment		266,250		266,250	47,263			47,263
Significant native species	Best Practice Management of Endangered Ecological Communities on the Cumberland Plain: Phase 1 Development of Guidelines and Demonstration Sites.		226,700		226,700				
Significant invasive species	Biological Control of Alligator Weed - Native Range Surveys for New Agents		102,000		102,000				
	Coordinated Pest Animal Control Within the Warragamba Catchment		500		500				
	Hawkesbury Weed Harvester		300,000		300,000				
	Model Catchment Plan Addressing Nutrient and Pest Species Management in the Catchment of a Wetland of National Importance -Long Neck Lagoon.		26,000		26,000	26,000			26,000
Estuarine, coastal and marine	Hawkesbury Estuary Management Program - Stage 1, Scoping Study		8,000		8,000				
<b>Total</b>			<b>1,482,200</b>		<b>1,482,200</b>	<b>392,401</b>			<b>392,401</b>

## Achievements

**Table A2.3.6** Outputs related to priority actions having a major focus on matters for target in Hawkesbury Nepean

Standard output	Land salinity		Soil condition		Rivers and wetlands		Nutrients in aquatic environments		Turbidity in aquatic environments		Surface water salinity		Native vegetation		Significant native species		Significant invasive species		Estuarine, coastal and marine		Other supporting activities	
	03-04	Total	03-04	Total	03-04	Total	03-04	Total	03-04	Total	03-04	Total	03-04	Total	03-04	Total	03-04	Total	03-04	Total	03-04	Total
Resource assessment																						
Decision support tools																						
Number of information management systems developed					2	2																
Investigations (survey, inventory and mapping and data analysis)																						
Number of vegetation studies																	120	120				
Number of species studies																	60	60				
Planning																						
Integrated catchment or sub-catchment plans																						
Number of sub-catchment plans developed																	24	24				
Capacity building																						
Facilitation motivation and support activities																						
Number of FTE active community support positions (facilitators or coordinators)																	10	10				
Skills and training activities																						
Number of training sessions held																	2	2				

## Regional investment summary

Plan accredited by Ministers: December 2003  
Investment strategy approved by Ministers: February 2004

### Expenditure

**Table A2.3.7** Regional investment funding having a major focus on matters for target in Hawkesbury Nepean

Matter for target	Budgeted Activity Expenditure (\$)				Reported Activity Expenditure (\$)			
	July 03 - March 04		Total to March 04		July 03 - March 04		Total to March 04	
	NAP	Trust	NAP	Trust	NAP	Trust	NAP	Trust
Other supporting activities		261,487		261,487				
Total		261,487		261,487				

**Table A2.3.8** Regional investment funding for types of activities in Hawkesbury Nepean

Activity Type	Budgeted Activity Expenditure (\$)				Reported Activity Expenditure (\$)			
	July 03 - March 04		Total to March 04		July 03 - March 04		Total to March 04	
	NAP	Trust	NAP	Trust	NAP	Trust	NAP	Trust
Capacity building		261,487		261,487				
Total		261,487		261,487				

### Activities and achievements

**Table A2.3.9** Regional investment activities in Hawkesbury Nepean

Matter for target	Activities	Budgeted Activity Expenditure (\$)				Reported Activity Expenditure (\$)			
		July 03 - March 04		Total to March 04		July 03 - March 04		Total to March 04	
		NAP	Trust	NAP	Trust	NAP	Trust	NAP	Trust
Other supporting activities	Goulburn Community Support Officer		63,000		63,000				
	Indigenous Community Support Including Community Support Officer		51,487		51,487				
	Lithgow Community Support Officer		63,000		63,000				
	Moss Vale Community Support Officer		21,000		21,000				
	Peri-urban Community Support Officer		63,000		63,000				
Total		261,487		261,487					

# Targets for Hawkesbury Nepean

## Resource condition targets

**Table A2.3.10** Resource condition targets related to regional investment in Hawkesbury Nepean

Matter for Target	Resource condition target
Soil condition	By 2012, existing and new developments and activities are moving towards sustainability as measured by the following indicators: Improved quality and increased area of riparian corridors
	By 2012, existing and new developments and activities are moving towards sustainability as measured by the following indicators: All new development incorporates Ecologically Sustainable Development principles
	By 2012, existing and new developments and activities are moving towards sustainability as measured by the following indicators: No increase in the cumulative impact of developments and activities
	By 2012, 65% (85% by 2020) of all lands are used within their capability and suitability
	By 2012, existing and new developments and activities are moving towards sustainability as measured by the following indicators: All land use incorporates sustainable best practice
	By 2012, existing and new developments and activities are moving towards sustainability as measured by the following indicators: Reduction in area of land degraded by development and activities that exceed the capability of the landscape
Rivers and wetlands	By 2012, improvement in river health is indicated by a higher rating at a minimum of 5 of the 9 AusRivAS sites currently rated as "well below reference" or "impoverished" and maintenance of the rating at each of the other 15 sites
	By 2012, water quality and river health indicators at 6 representative river regions will meet the Healthy Rivers Commission (1998) water quality objectives in base flow
Significant native species	Manage for biodiversity conservation, a minimum of 10% by 2012 and 30% by 2022, of the original area of each priority vegetation community
	By 2012, the extent, quality and connectivity of native terrestrial and aquatic habitats is significantly improved as measured by the targets set out below for the major landscapes of the Hawkesbury Lower Nepean
Other supporting activities	By 2020, 90% of the community and other beneficiaries will be aware, informed and involved in the management of a clean, healthy environment
	By 2012, there has been a sufficient level of stakeholder awareness, organisational capacity, community empowerment and resourcing to achieve all the catchment and management targets

## Management action targets

**Table A2.3.11** Management action targets related to regional investment in Hawkesbury Nepean

Matter for Target	Management action target
Land salinity	By 2012, there is a 20% reduction in the area of severely to moderately degraded saline discharge sites
Soil condition	By 2012, there is no further degradation of the catchment as measured by a cumulative index of land degradation
	By 2012, there is a 20% (approximately 40,000ha) reduction in the area of historic moderately to severely degraded land and 10% (77km) of priority degraded streambank is stabilised.
Rivers and wetlands	By 2012, protect all riverine vegetation and watercourse buffers from degradation or loss, and establish a system of riparian corridors
	Maintain existing native riparian vegetation along all riparian zones within the catchment and by 2012, improve the ranking of the condition of 188km and 376ha of streambank from 'good' to 'near intact'
Native vegetation	By 2012, maintain the condition of all significant remnants of native vegetation and improve the condition of 20% of the area covered by priority native vegetation communities
	By 2012, improve the value of the links (as indicated by number, width and native vegetation quality of links) between significant remnants of native vegetation by 10%
Significant invasive species	By 2006, implement adequately funded and closely linked strategies and effective actions plans for all major and potential terrestrial and aquatic weed/pest species
	By 2012, the whole community aims to reduce the area of land infested by pest plants and animals to below 2002 levels
Estuarine, coastal and marine	By 2012, the effective connectivity of aquatic habitats for native species is increased by 50%.
	By 2006, the area of native terrestrial and aquatic environments undergoing restoration is increased by 20%
	For estuarine and marine habitats: i) distribution will be mapped by 2004; ii) species density and diversity will be assessed by 2007 and iii) appropriate methods to assess biotic integrity will be developed and trialled by 2012
	From 2002, the no net loss principle for native terrestrial and aquatic environments is applied to all developments, and from 2007 there is no net loss or degradation of these environments
Other supporting activities	By 2012, appropriate incentives and partnerships are in place and are influencing 70% of the catchment community and other beneficiaries to participate in improving catchment management
	From 2003, there is a comprehensive Blueprint implementation program
	By 2005, a comprehensive monitoring and reporting framework has been implemented
	By 2005, the catchment actions within the Blueprint acknowledge and accommodate an understanding of Aboriginal skills, beliefs, culture and customs as they relate to natural resource management
	By 2005, aspects of the landscape related to natural resource management that have Aboriginal cultural significance will be identified and by 2008, sites, places and landscapes with Aboriginal cultural significance will be protected
	By 2012, targeted awareness and education programs that model and achieve behavioural change and involve government, industry and community partnerships have been implemented for high risk activities or groups
	By 2005, a comprehensive monitoring and reporting framework to be developed which will; effectively link collected data; be appropriately explained and reported back to the community; and is used for decision making
	By 2012, due to a range of education programs, 25% of the catchment community have gained knowledge and skills that will support them in acting to improve catchment management
	By 2012, 60% of the catchment community and other beneficiaries will be aware of the benefits of improved catchment management
	By 2008 flooding, bushfire and salinity risk management is incorporated into all relevant environmental planning instruments
Increase to 60% by 2007 the proportion of all lands in the catchment covered by an actively implemented integrated property management plan that addresses threats to biodiversity	