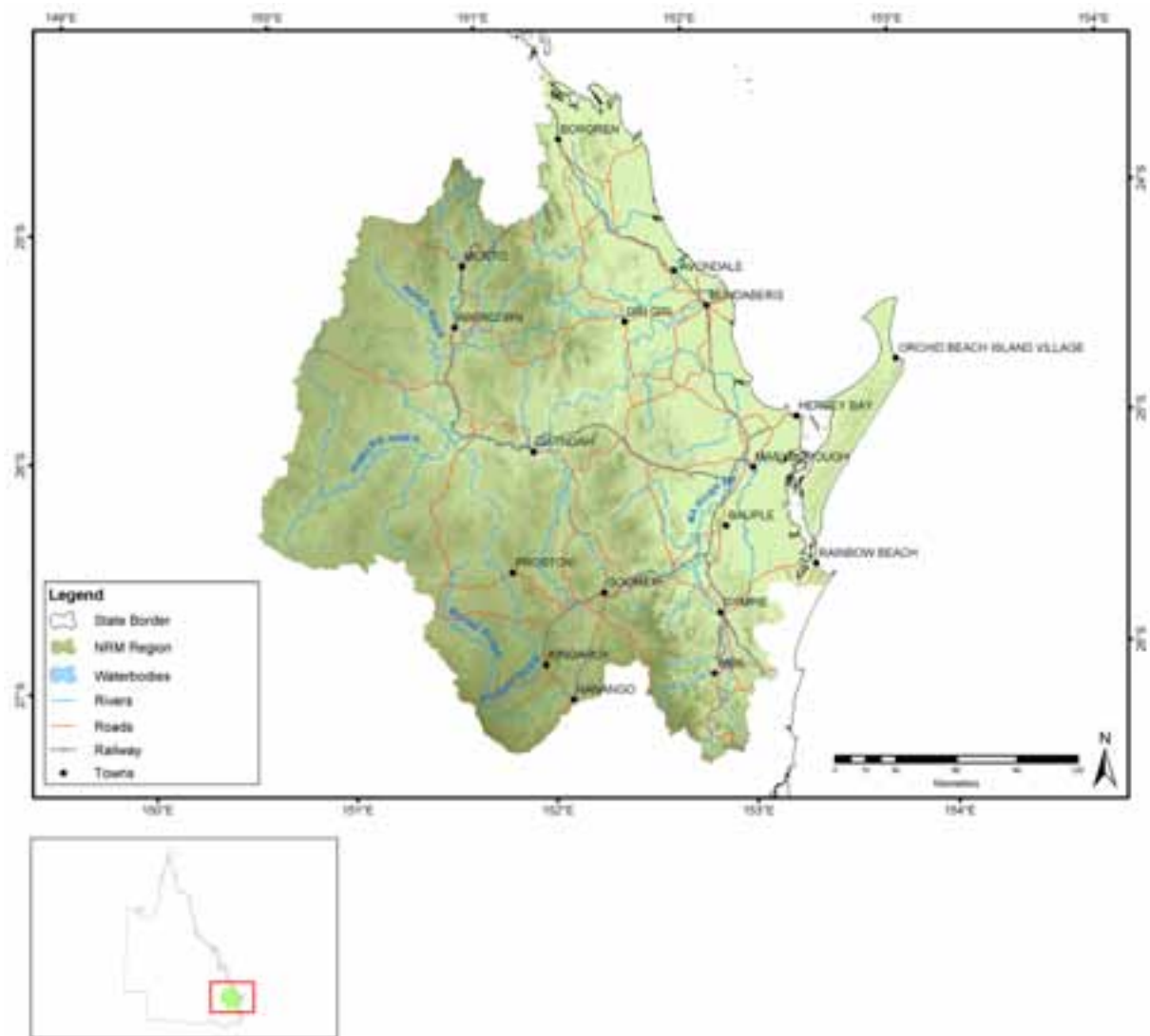


A4.3 BURNETT MARY

404



Administrative arrangements

Administrative Body: Burnett Mary Regional Group for Natural Resource Management

Trust region: Burnett Mary

NAP region: Lockyer – Burnett Mary

Investment summary

Table A4.3.1 Joint Government approved investments for Burnett Mary*

Funding stream	2003-04 Approvals (\$)		Total Approvals to June 2004 (\$)	
	NAP	Trust	NAP	Trust
Foundation funding			1,015,600	130,000
Priority action	1,741,214	1,560,616	1,741,214	1,560,616
Total	1,741,214	1,560,616	2,756,814	1,690,616

* Figures reflect Australian Government and State/Territory Government approvals for NAP and only Australian Government approvals for the Trust. State/Territory Government cash and in-kind funding for the Trust is not included.

Table A4.3.2 Reported expenditure for approved investments in Burnett Mary

Funding stream	Budgeted Activity Expenditure (\$)				Reported Activity Expenditure (\$)			
	July 03 - March 04		Total to March 04		July 03 - March 04		Total to March 04	
	NAP	Trust	NAP	Trust	NAP	Trust	NAP	Trust
Foundation funding	1,015,600	130,000	1,015,600	130,000	403,573		403,573	
Priority action	1,741,213	960,616	1,741,213	960,616		274,656		274,656
Total	2,756,813	1,090,616	2,756,813	1,090,616	403,573	274,656	403,573	274,656

Priority action investments

Expenditure

Table A4.3.3 Priority action funding having a major focus on matters in Burnett Mary

Matter for target	Budgeted Activity Expenditure (\$)				Reported Activity Expenditure (\$)			
	July 03 - March 04		Total to March 04		July 03 - March 04		Total to March 04	
	NAP	Trust	NAP	Trust	NAP	Trust	NAP	Trust
Rivers and wetlands	892,165		892,165					
Turbidity in aquatic environments	492,748		492,748					
Other supporting activities	356,300	960,616	356,300	960,616		274,656		274,656
Total	1,741,213	960,616	1,741,213	960,616		274,656		274,656

Table A4.3.4 Priority action funding for types of activities in Burnett Mary

Activity Type	Budgeted Activity Expenditure (\$)				Reported Activity Expenditure (\$)			
	July 03 - March 04		Total to March 04		July 03 - March 04		Total to March 04	
	NAP	Trust	NAP	Trust	NAP	Trust	NAP	Trust
Resource assessment	1,384,913		1,384,913					
Capacity building	356,300	960,616	356,300	960,616		274,656		274,656
Total	1,741,213	960,616	1,741,213	960,616		274,656		274,656

Table A4.3.5 Priority action activities in Burnett Mary

Matter for target	Activities	Budgeted Activity Expenditure (\$)				Reported Activity Expenditure (\$)			
		July 03 - March 04		Total to March 04		July 03 - March 04		Total to March 04	
		NAP	Trust	NAP	Trust	NAP	Trust	NAP	Trust
Rivers and wetlands	Water Quality	892,165		892,165					
Turbidity in aquatic environments	Land and Vegetation Management - adapt and develop GLM package for B/Mary region	492,748		492,748					
Other supporting activities	Burnett Mary NHT2 Facilitator and Coordinator Additional		960,616		960,616		274,656		274,656
	Social & Economic - Undertake initial needs analysis of soc/econ data usages	356,300		356,300					
Total		1,741,213	960,616	1,741,213	960,616		274,656		274,656

Achievements

Table A4.3.6 Outputs related to priority actions having a major focus on matters for target in Burnett Mary

Standard output	Land salinity		Soil condition		Rivers and wetlands		Nutrients in aquatic environments		Turbidity in aquatic environments		Surface water salinity		Native vegetation		Significant native species		Significant invasive species		Estuarine, coastal and marine		Other supporting activities		
	03-04	Total	03-04	Total	03-04	Total	03-04	Total	03-04	Total	03-04	Total	03-04	Total	03-04	Total	03-04	Total	03-04	Total	03-04	Total	
Capacity building																							
Facilitation motivation and support activities																							
Number of FTE active community support positions (facilitators or coordinators)																							
																						15	15