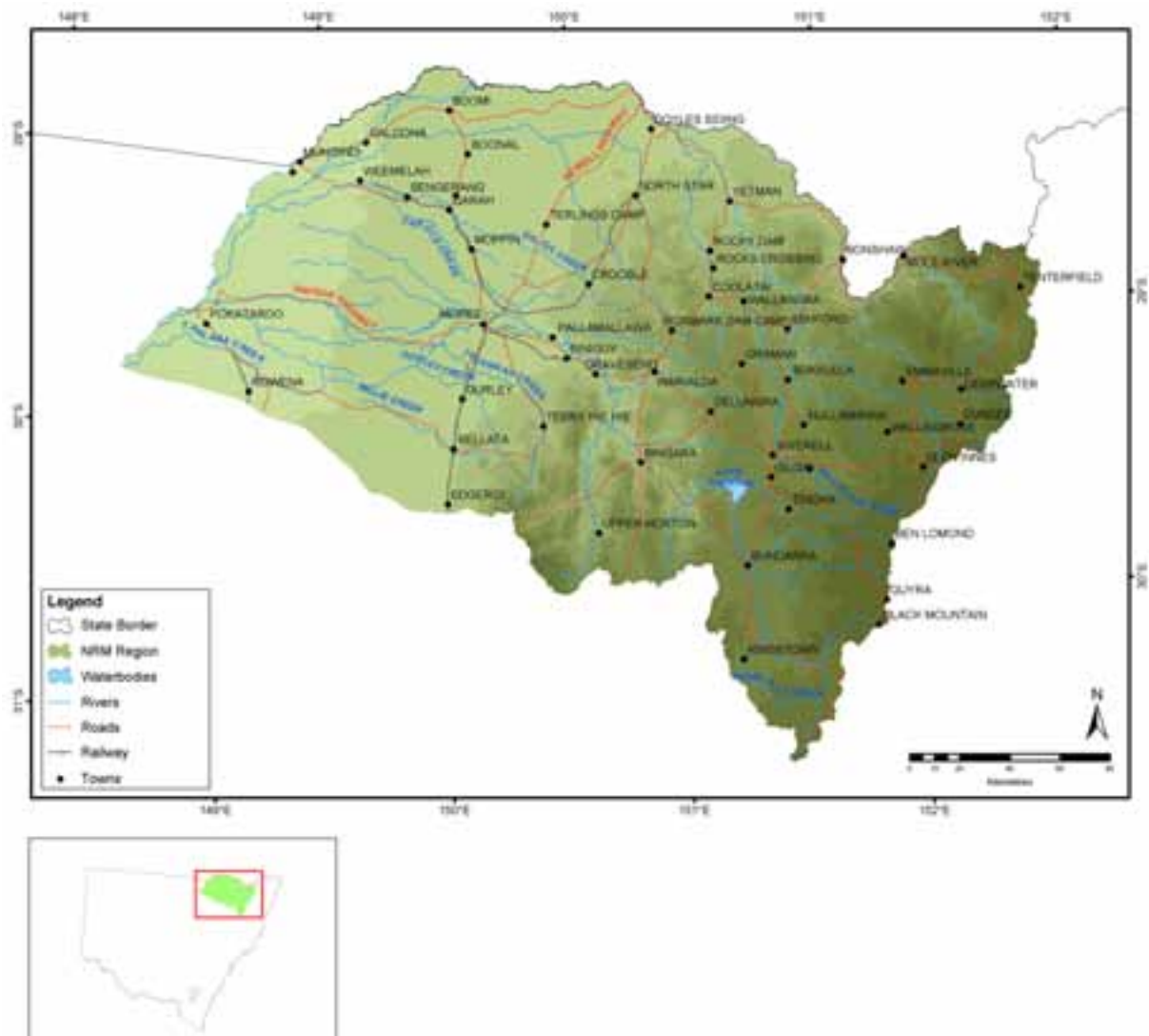


A2.1 BORDER RIVERS - GWYDIR



Administrative arrangements

Administrative Body: Border Rivers – Gwydir Catchment Management Authority

Trust region: Border Rivers – Gwydir

NAP region: Border Rivers – Gwydir

Investment summary

Table A2.1.1 Joint Government approved investments for Border Rivers – Gwydir*

Funding stream	2003-04 Approvals (\$)		Total Approvals to June 2004 (\$)	
	NAP	Trust	NAP	Trust
Priority action	630,300		1,215,300	852,000
Regional investment	4,445,042	377,000	4,445,042	377,000
Total	5,075,342	377,000	5,660,342	1,229,000

* Figures reflect Australian Government and State/Territory Government approvals for NAP and only Australian Government approvals for the Trust. State/Territory Government cash and in-kind funding for the Trust is not included.

Table A2.1.2 Reported expenditure for approved investments in Border Rivers - Gwydir

Funding stream	Budgeted Activity Expenditure (\$)				Reported Activity Expenditure (\$)			
	July 03 - March 04		Total to March 04		July 03 - March 04		Total to March 04	
	NAP	Trust	NAP	Trust	NAP	Trust	NAP	Trust
Priority action	802,800	221,050	922,800	221,050	73,472		94,922	
Regional investment	1,263,183	128,418	1,263,183	128,418				
Total	2,065,983	349,468	2,185,983	349,468	73,472		94,922	

Priority action investments

Expenditure

Table A2.1.3 Priority action funding having a major focus on matters for target in Border Rivers - Gwydir

Matter for target	Budgeted Activity Expenditure (\$)				Reported Activity Expenditure (\$)			
	July 03 - March 04		Total to March 04		July 03 - March 04		Total to March 04	
	NAP	Trust	NAP	Trust	NAP	Trust	NAP	Trust
Soil condition		18,750		18,750				
Surface water salinity	585,000		705,000		73,472		94,922	
Native vegetation		50,000		50,000				
Other supporting activities	217,800	152,300	217,800	152,300				
Total	802,800	221,050	922,800	221,050	73,472		94,922	

Table A2.1.4 Priority action funding for types of activities in Border Rivers – Gwydir

Activity Type	Budgeted Activity Expenditure (\$)				Reported Activity Expenditure (\$)			
	July 03 - March 04		Total to March 04		July 03 - March 04		Total to March 04	
	NAP	Trust	NAP	Trust	NAP	Trust	NAP	Trust
Resource assessment	585,000	25,800	705,000	25,800	73,472		94,922	
Planning	75,000	72,500	75,000	72,500				
Capacity building	142,800	122,750	142,800	122,750				
Total	802,800	221,050	922,800	221,050	73,472		94,922	

Table A2.1.5 Priority action activities in Border Rivers – Gwydir

Matter for target	Activities	Budgeted Activity Expenditure (\$)				Reported Activity Expenditure (\$)			
		July 03 - March 04		Total to March 04		July 03 - March 04		Total to March 04	
		NAP	Trust	NAP	Trust	NAP	Trust	NAP	Trust
Soil condition	Drought and Groundcover in the NSW Border Rivers Catchment		18,750		18,750				
Surface water salinity	Groundwater Data Collection and Interpretation for Border Rivers	213,000		273,000		67,039		80,158	
	Groundwater Investigations for Salinity Management in the Gwydir Catchment	372,000		432,000		6,433		14,764	
Native vegetation	Managing Vegetation for Conservation in the Darling Riverine Plains and Brigalow Belt South Bioregions of the NSW Border Rivers Catchment		50,000		50,000				
Other supporting activities	Border Rivers - Regional Facilitator and Coordinator	71,400		71,400					
	Communications for the Gwydir Catchment Management Board		30,000		30,000				
	Data/Information Analysis in the Gwydir Catchment		25,800		25,800				
	Finalising Joint Priority Actions in NSW - Qld Border Rivers Project	75,000		75,000					
	Gwydir - Regional Facilitator and Coordinator	71,400		71,400					
	Initial Data and Information Requirements for Border Rivers Catchment Blueprint Implementation		72,500		72,500				
	Property Planning Accreditation		24,000		24,000				
Total		802,800	221,050	922,800	221,050	73,472		94,922	

Achievements

Table A2.1.6 Outputs related to priority actions having a major focus on matters for target in Border Rivers - Gwydir

Standard output	Land salinity		Soil condition		Rivers and wetlands		Nutrients in aquatic environments		Turbidity in aquatic environments		Surface water salinity		Native vegetation		Significant native species		Significant invasive species		Estuarine, coastal and marine		Other supporting activities	
	03-04	Total	03-04	Total	03-04	Total	03-04	Total	03-04	Total	03-04	Total	03-04	Total	03-04	Total	03-04	Total	03-04	Total	03-04	Total
Resource assessment																						
Decision support tools																						
Number of other decision support tools developed																					2	2
Investigations (survey, inventory and mapping and data analysis)																						
Number of other studies																					2	2
Capacity building																						
Skills and training activities																						
Number of other key materials developed			2	2																		

Regional investment summary

Plan accredited by Ministers: November 2003

Investment strategy approved by Ministers: February 2004

Expenditure

Table A2.1.7 Regional investment funding having a major focus on matters for target in Border Rivers - Gwydir

Matter for target	Budgeted Activity Expenditure (\$)				Reported Activity Expenditure (\$)			
	July 03 - March 04		Total to March 04		July 03 - March 04		Total to March 04	
	NAP	Trust	NAP	Trust	NAP	Trust	NAP	Trust
Land salinity	163,811		163,811					
Soil condition	115,140		115,140					
Rivers and wetlands	126,759		126,759					
Surface water salinity	140,366		140,366					
Native vegetation		116,500		116,500				
Significant native species		11,918		11,918				
Other supporting activities	717,107		717,107					
Total	1,263,183	128,418	1,263,183	128,418				

Table A2.1.8 Regional investment funding for types of activities in Border Rivers - Gwydir

Activity Type	Budgeted Activity Expenditure (\$)				Reported Activity Expenditure (\$)			
	July 03 - March 04		Total to March 04		July 03 - March 04		Total to March 04	
	NAP	Trust	NAP	Trust	NAP	Trust	NAP	Trust
Resource assessment	90,154		90,154					
Planning	159,367		159,367					
Capacity building	854,773	128,418	854,773	128,418				
On-ground activities	158,889		158,889					
Total	1,263,183	128,418	1,263,183	128,418				

Activities and achievements

Table A2.1.9 Regional investment activities in Border Rivers - Gwydir

Matter for target	Activities	Budgeted Activity Expenditure (\$)				Reported Activity Expenditure (\$)			
		July 03 - March 04		Total to March 04		July 03 - March 04		Total to March 04	
		NAP	Trust	NAP	Trust	NAP	Trust	NAP	Trust
Land salinity	Developing Essential Salinity Resources for the Border Rivers/Gwydir	54,767		54,767					
	Monitoring and Evaluating Changes in Salinity to Determine Progress Towards Achieving End of Valley Targets, Within Valley Targets as well as Identifying Hot Spots and Priority Areas	30,155		30,155					
	Salt Tolerant Species for Rehabilitation in the Border Rivers/Gwydir	21,167		21,167					
	Targeted Investment to Change Landuse Management for Improved Salinity and Water Quality Outcomes in the Border Rivers/Gwydir	40,000		40,000					
	Water Use and Efficiency	17,722		17,722					
	Soil condition	Developing Essential Soil and Sustainable Landuse Resources for the Border Rivers/Gwydir	115,140		115,140				
Rivers and wetlands	Developing Essential Riverine Ecosystem Resources for the Border Rivers/Gwydir	66,760		66,760					
	Riverine Monitoring Including Groundwater, Water Quality and Wetlands Monitoring	59,999		59,999					
Surface water salinity	Integrating Salinity, Water Quality and Biodiversity Management With Queensland	8,606		8,606					
	NAP - BMPs for NREM Management in the Border Rivers/Gwydir (Salinity, Riverine Ecosystem, Soils and Biodiversity Focus)	51,760		51,760					
	Targeted Investment to Manage Native Vegetation for Salinity, Water Quality and Conservation Outcomes in the Border Rivers/Gwydir	40,000		40,000					
	Targeted Investment to Manage Wetlands and Riverine Ecosystems for Water Quality, Salinity and Conservation Outcomes in the Border Rivers/Gwydir	40,000		40,000					

Matter for target	Activities	Budgeted Activity Expenditure (\$)				Reported Activity Expenditure (\$)			
		July 03 - March 04		Total to March 04		July 03 - March 04		Total to March 04	
		NAP	Trust	NAP	Trust	NAP	Trust	NAP	Trust
Native vegetation	Developing Essential Biodiversity Resources for the Border Rivers/Gwydir		116,500		116,500				
Significant native species	NHT - BMPs for NREM Management in the Border Rivers/Gwydir (Salinity, Riverine Ecosystem, Soils and Biodiversity Focus)		11,918		11,918				
Other supporting activities	Analysis of Investment Strategy Effectiveness in the Border Rivers/Gwydir	9,234		9,234					
	Community Capacity Building in the Border Rivers/Gwydir (CMA to Develop Partnerships with Industry, Indigenous Communities and Wider Community)	95,065		95,065					
	Data Management	10,000		10,000					
	Extension Activities for Improved Natural Resource Management in the Border Rivers/Gwydir	76,449		76,449					
	Facilitation and Coordination in the Border Rivers/Gwydir (Landcare CSO Positions)	397,325		397,325					
	NREM Education and Awareness in the Border Rivers/Gwydir (Development and Delivery of Integrated NREM Programs)	87,450		87,450					
	Property Management Planning for Accreditation and Sustainability	31,584		31,584					
	Valuing, Protecting and Managing Indigenous Cultural Heritage Assets (Sites, Places and Features) in the Border Rivers/Gwydir	10,000		10,000					
Total		1,263,183	128,418	1,263,183	128,418				

Targets for Border Rivers – Gwydir

Resource condition targets

Table A2.1.10 Resource condition targets related to regional investment in Border Rivers - Gwydir

Matter for Target	Resource condition target
Land salinity	By 2012, to minimise the impact of dryland salinity, the area of land where the ground water is within 2 metres of the surface will not exceed 16,800 ha
Soil condition	By 2010, use land in the catchment within its capability and rehabilitate at least 82,972 ha (10%) of the land affected by areal erosion (829,720 ha) in strategic, priority locations throughout the Gwydir catchment
Rivers and wetlands	By 2012, the average riverine ecosystem condition in the NSW Border Rivers catchment should increase from "31.5/50" to "34/50", an 8% improvement
	By 2010, the Average Riverine Condition Assessment Index (RCA Index) across the whole Gwydir catchment should improve by at least 2 index points, whilst at the same time no individual sub-catchment should deteriorate in condition
Surface water salinity	By 2010, median salinity levels in the Mehi River at Bronte should not exceed 390 µs/cm EC and levels should not exceed 730 µs/cm EC more than 20% of the time
	By 2012, median salinity levels in the Macintyre River at Mungindi should not exceed 230µs/cm EC; salinity levels should not exceed 630µs/cm EC more than 20% of the time
	By 2010, median salt loads in the Mehi River at Bronte should not exceed 6,500 tonnes/year and loads should not exceed 20,600 tonnes/year more than 20% of the time
Native vegetation	By 2012, establish 8,000 ha, 0.3% of the catchment, of new native vegetation for an improved biodiversity outcome
	By 2012, manage 150,000 ha, 6.2% of the catchment, of existing native vegetation for conservation through a formal agreement (currently circa 80,000 ha, 3.3% of the catchment)
	By 2012, through the adoption of the no net loss principle, retain the current 1.31 million ha, 54% of the catchment, of native vegetation
	By 2003, secure native biodiversity by retaining at least 1,418,715 ha (53%) native vegetation cover across the Gwydir Catchment, of which at least 266,133 ha (10%) of the catchment area is managed for conservation outcomes by 2010

Management action targets

Table A2.1.11 Management action targets related to regional investment in Border Rivers - Gwydir

Matter for Target	Management action target
Rivers and wetlands	Maintain water quality standards
	Protection of native aquatic biodiversity
	Maintenance of water quality to sustain ecosystem function of riverine environments
	No nett increase in rate of streambank erosion, bed lowering and sedimentation
	Control stream bank erosion, bed lowering and sedimentation
	Greater community awareness and understanding of natural resource and environment management issues in the Border Rivers creating a greater community capacity
	Maintenance of condition and extent of existing native riparian vegetation within the riparian zone
Surface water salinity	Manage significant point sources
	Establish deep rooted perennial vegetation to intercept groundwater
	No nett increase in salt loads/river EC from new development
	Improvement in water quality in wetlands
Native vegetation	Native vegetation across all broad vegetation types managed for conservation outcomes
	Adopt the no net loss principle
	Adopt BMP for terrestrial and aquatic animal pests
	Establish new vegetation for improved biodiversity
	Manage weeds consistent with the NSW weed strategy
	From 2002 to 2012, maintain HCV value vegetation
	Native vegetation managed for conservation
	Establishment of additional native vegetation across all bioregions to enhance existing vegetation and biodiversity